



Price
£425,000

Freehold

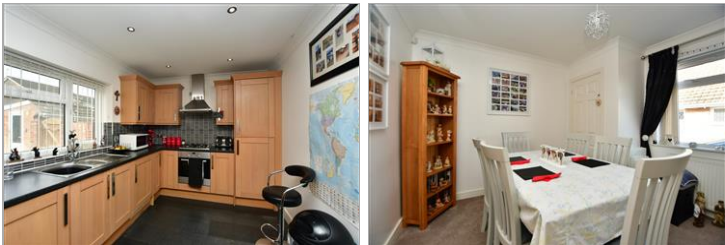
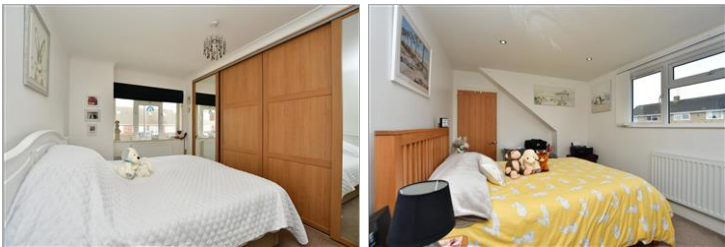
4x  2x  1x 

**Romsey Close,
Rochester, Kent, ME2**

OVER 60?

Secure this property
for up to **59% less!**

Wards
Helping you move forwards



Main features

- Extended chalet bungalow in a cul-de-sac position
- Ideal location for amenities, transport links and schools
- Garage and driveway for over 6 cars
- Low maintenance rear garden
- Beautifully presented and modernised

Accommodation

GROUND FLOOR

Entrance Porch

Hallway: 9'8 x 9'3 (2.95m x 2.82m)

Lounge/Dining Area: 21'3 x 11'10 (6.48m x 3.61m)

Kitchen: 11'1 x 8'9 (3.38m x 2.67m)

Bedroom 1: 14'1 x 8'9 (4.30m x 2.67m)

Bedroom 2: 11'10 at widest point x 11'3 at widest point (3.61m x 3.43m)

Bathroom: 6'3 x 5'4 (1.91m x 1.63m)

FIRST FLOOR

Landing

Bedroom 3: 13'2 at widest point x 8'6 at widest point (4.02m x 2.59m)

Bedroom 4: 14'3 at widest point x 9'8 at widest point (4.35m x 2.95m)

Shower Room: 7'0 x 5'4 (2.14m x 1.63m)

OUTSIDE

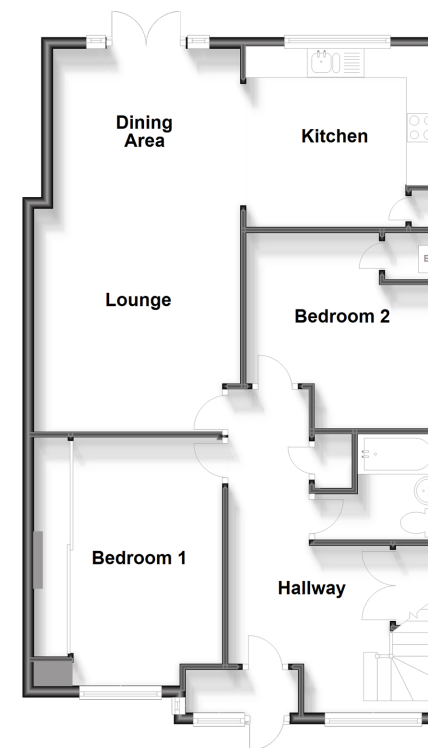
Driveway

Garage

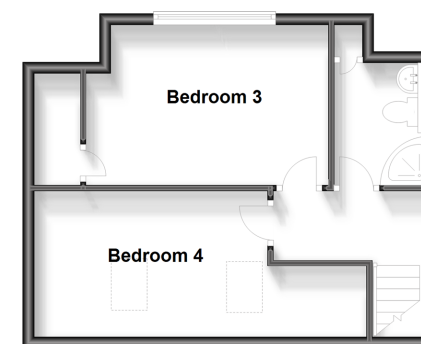
Front Garden

Rear Garden

Ground Floor
Approx. 80.2 sq. metres (863.0 sq. feet)



First Floor
Approx. 36.2 sq. metres (389.2 sq. feet)



Call Strood - 01634 716597 ■ wardsofkent.co.uk

- Legal advice should be taken to verify fixtures/fittings, planning, alterations and/or lease details
- Appliances & services are untested, dimensions are approximate and floor plans are not to scale
- Through a Homewise Home For Life Plan people aged 60+ can secure this property for up to 59% less, by purchasing a Lifetime Lease.



11845074/20231007/DV/JC