



Price
£550,000

Freehold

6x  3x  2x 

**Stoke Road, Allhallows,
Rochester, Kent, ME3**

OVER 60?

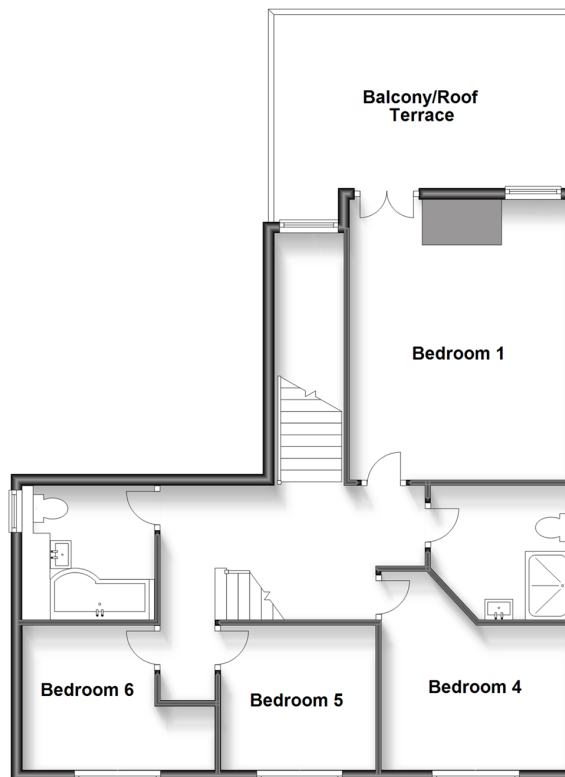
Secure this property
for up to **59% less!**

Wards
Helping you move forwards

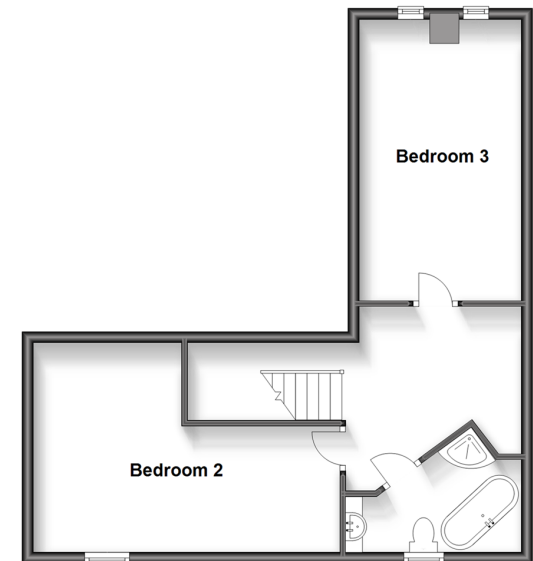
Ground Floor
Approx. 148.1 sq. metres (1594.6 sq. feet)



First Floor
Approx. 76.2 sq. metres (820.1 sq. feet)



Second Floor
Approx. 49.5 sq. metres (532.7 sq. feet)



Accommodation

GROUND FLOOR

Entrance Hall
Lounge: 21'9 x 15'5 (6.63m x 4.70m)
Sitting Area: 14'1 x 12'10 (4.30m x 3.91m)
Kitchen/Breakfast Area: 14'5 x 14'0 (4.40m x 4.27m)
Dining Area: 15'5 x 10'5 (4.70m x 3.18m)
Rear Lobby
Cloakroom
Utility Room: 13'9 x 10'5 (4.19m x 3.18m)
Office: 34'3 x 8'4 (10.45m x 2.54m)

FIRST FLOOR

Landing
Bedroom 1: 16'6 x 13'3 (5.03m x 4.04m)
Balcony/Roof Terrace
Shower Room
Bedroom 4: 12'3 x 10'7 (3.74m x 3.23m)
Bedroom 5: 11'3 x 8'3 (3.43m x 2.52m)
Bedroom 6: 9'6 x 9'4 (2.90m x 2.85m)
Bathroom: 7'9 x 6'0 (2.36m x 1.83m)

SECOND FLOOR

Landing
Bedroom 2: 18'2 (5.54m) x 13'3 (4.04m) narrowing to 7'3 (2.21m)
Bedroom 3: 16'8 x 9'4 (5.08m x 2.85m)
Bathroom

OUTSIDE

Driveway
Rear Garden



Main features

- Stunning Grade II Listed detached house dating back to 1693
- Period features with wonderful character alongside modern benefits
- Flexible accommodation over 3 floors
- Roof terrace overlooking garden and countryside
- Central village location close to amenities
- Gated entrance to driveway providing parking for several vehicles



Nearest Schools

Primary Schools: Allhallows Primary 0.3 miles, Stoke Community School 0.9 miles, High Halstow Primary 3.6 miles
Secondary Schools: The Hundred of Hoo Comprehensive School 5.0 miles



Transport Information

Train Stations: Strood 7.8 miles



Address

Stoke Road, Allhallows, Rochester, Kent, ME3



Directions

For directions to this property please contact us.



Wards
Helping you move forwards

Call Strood Branch 01634 716597 ■ wardsofkent.co.uk



■ Legal advice should be taken to verify fixtures/fittings, planning, alterations and/or lease details ■ Appliances & services are untested, dimensions are approximate and floor plans are not to scale
■ Through a Homewise Home For Life Plan people aged 60+ can secure this property for up to 59% less, by purchasing a Lifetime Lease.



11845099/20230807/JC/JC