



Price

£1,000,000

Freehold

6x  2x  3x 

**Watling Street, Strood,
Rochester, Kent, ME2**

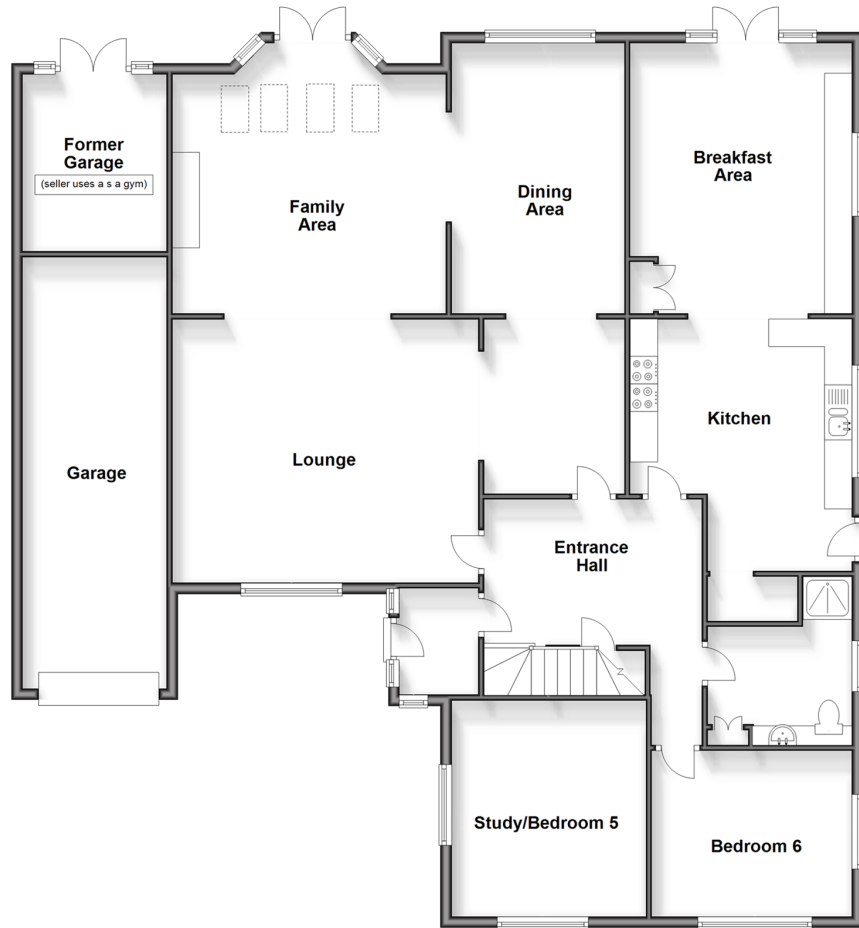
OVER 60?

Secure this property
for up to **59% less!**

Wards
Helping you move forwards

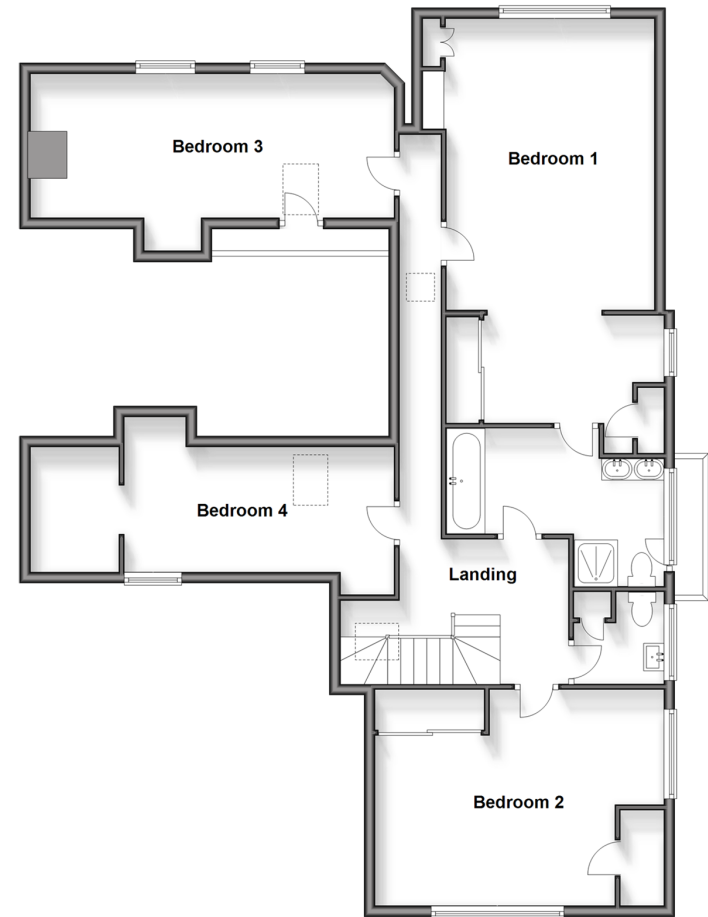
Ground Floor

Approx. 196.1 sq. metres (2111.2 sq. feet)



First Floor

Approx. 113.9 sq. metres (1225.7 sq. feet)



Accommodation

GROUND FLOOR

Entrance Porch
Entrance Hall
Family Area: 16'9 x 14'4 (5.11m x 4.37m)
Lounge : 17'11 x 14'7 (5.46m x 4.45m)
Dining Area: 27'6 x 10'4 (8.39m x 3.15m)
Kitchen/Breakfast Area: 32'2 x 13'3 (9.81m x 4.04m)
Bedroom 6: 12'0 x 9'10 (3.66m x 3.00m)
Study/Bedroom 5 : 13'5 x 11'10 (4.09m x 3.61m)
Bathroom

FIRST FLOOR

Landing
Bedroom 1: 23'5 x 12'1 (7.14m x 3.69m)
En-Suite Bathroom: 12'5 x 6'7 (3.79m x 2.01m)
Bedroom 2: 15'9 x 12'10 (4.80m x 3.91m)
Cloakroom
Bedroom 3 : 21'8 x 8'4 (6.61m x 2.54m)
Bedroom 4: 16'10 x 8'9 (5.13m x 2.67m)

OUTSIDE

Driveway
Rear Garden
Swimming Pool
Garage : 25'2 x 8'1 (7.68m x 2.47m)
Former Garage (Used as Gym)



Main features

- 6 bedroom detached house with ample parking for up to 20 cars
- Fantastic entertaining space with open plan area that is backing onto fields
- 2 bathrooms and an upstairs cloakroom
- Offered for sale with no onward chain
- Sought after location



Nearest Schools

Primary Schools: Bligh Junior School, Elaine Primary, Cedar Primary School
Secondary Schools: Strood Academy, Abbey Court Community Special School, Gad's Hill School



Transport Information

Train Stations: Strood 1.7 miles, Cuxton 1.7 miles, Higham 1.8 miles



Address

Watling Street, Strood, Rochester, Kent, ME2



Directions

For directions to this property please contact us.



Wards
Helping you move forwards

Call Strood Branch 01634 716597 ■ wardsofkent.co.uk



- Legal advice should be taken to verify fixtures/fittings, planning, alterations and/or lease details
- Appliances & services are untested, dimensions are approximate and floor plans are not to scale
- Through a Homewise Home For Life Plan people aged 60+ can secure this property for up to 59% less, by purchasing a Lifetime Lease.



11845115/20240223/DV/CM