



Price
£625,000

Freehold

4x  2x  2x 

**Richborough Drive,
Strood, Rochester, Kent,
ME2**

OVER 60?

Secure this property
for up to **59% less!**

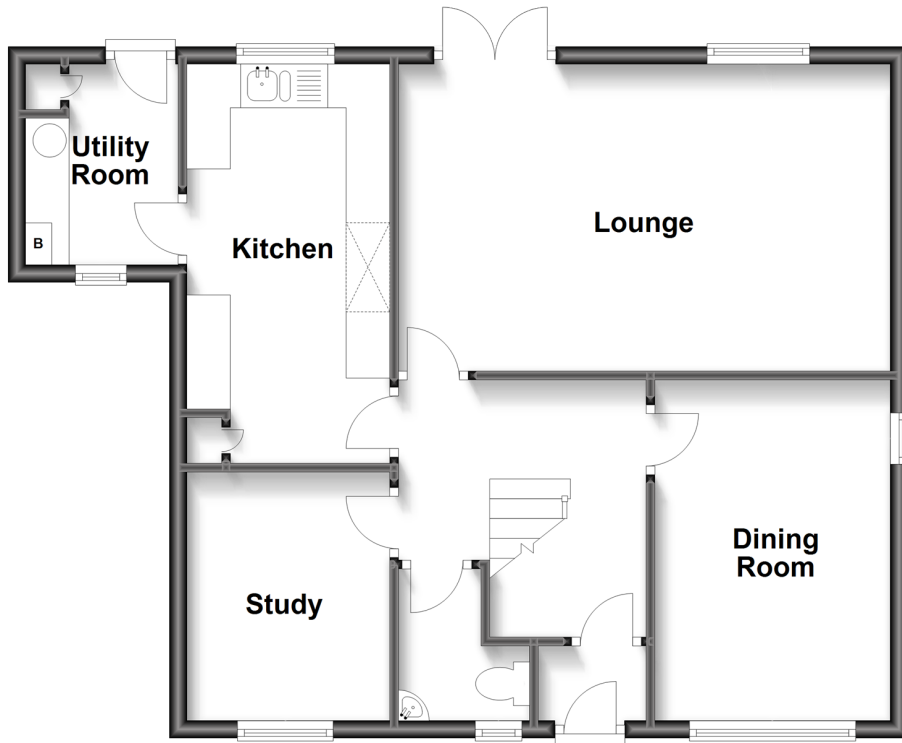


Video Tour available

Wards
Helping you move forwards

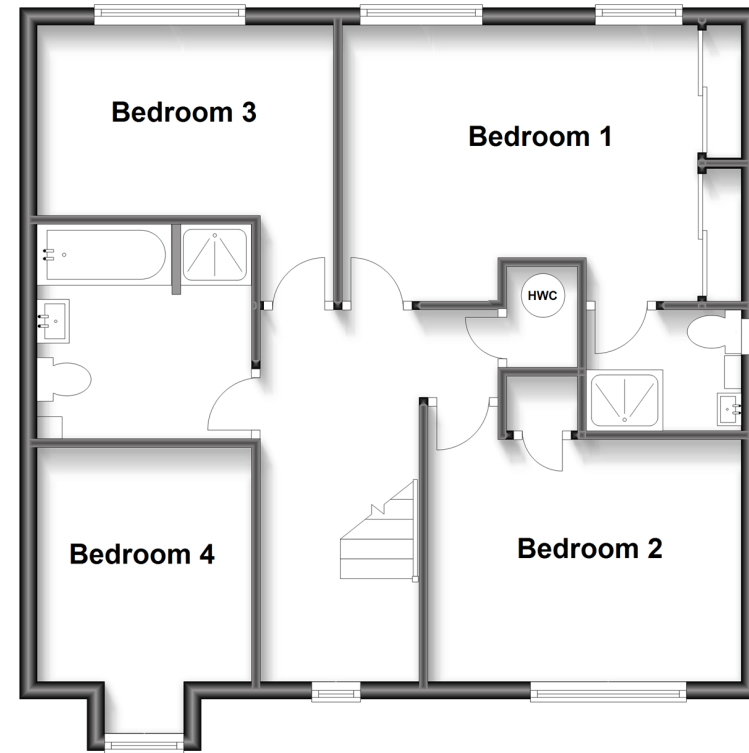
Ground Floor

Approx. 65.0 sq. metres (699.2 sq. feet)



First Floor

Approx. 61.2 sq. metres (659.2 sq. feet)



Accommodation

GROUND FLOOR

Entrance Porch
Entrance Hall
Cloakroom
Study: 9'10 x 7'7 (3.00m x 2.31m)
Lounge: 18'1 x 11'6 (5.52m x 3.51m)
Dining Room: 13'2 x 8'9 (4.02m x 2.67m)
Kitchen: 15'0 x 7'8 (4.58m x 2.34m)
Utility Room: 9'8 x 5'2 (2.95m x 1.58m)

FIRST FLOOR

Landing
Bedroom 1: 13'2 (4.02m) narrowing to 9'8 (2.95m) x 11'4 (3.46m)
En-suite Shower Room
Bedroom 2: 11'0 x 9'0 (3.36m x 2.75m)
Bedroom 3: 9'0 x 7'10 (2.75m x 2.39m)
Bedroom 4: 11'0 x 8'1 (3.36m x 2.47m)
Bathroom: 8'3 x 7'7 (2.52m x 2.31m)

OUTSIDE

Double Garage: 17'1 x 17'1 (5.21m x 5.21m)
Driveway
Front Garden
Rear Garden



Main features

- Fabulous family home on a large corner plot
- Sought after location, close to Broom Hill Park and amenities
- Lounge, dining room and study
- En-suite shower room
- Double garage, driveway for several cars
- Large mature gardens, perfect for entertaining



Nearest Schools

Primary Schools: Temple Mill Primary, English Martyrs' Catholic Primary, Gordon Junior School
Secondary Schools: Abbey Court Community Special School, King's School, Rochester Independent College



Transport Information

Train Stations: Strood 1.2 miles, Rochester 1.8 miles, Cuxton 2.4 miles



Address

Richborough Drive, Strood, Rochester, Kent, ME2



Directions

For directions to this property please contact us.



Wards
Helping you move forwards

Call Strood Branch 01634 716597 ■ wardsofkent.co.uk



■ Legal advice should be taken to verify fixtures/fittings, planning, alterations and/or lease details ■ Appliances & services are untested, dimensions are approximate and floor plans are not to scale
■ Through a Homewise Home For Life Plan people aged 60+ can secure this property for up to 59% less, by purchasing a Lifetime Lease.



11845150/20230309/DV/JC