



OVER 60?

You could get up to
59% off the price!*



Video Tour available

Price

£280,000

Freehold

3x  1x  1x 

**Lincoln Close, Strood,
Rochester, Kent, ME2**

Wards
Helping you move forwards



Main features

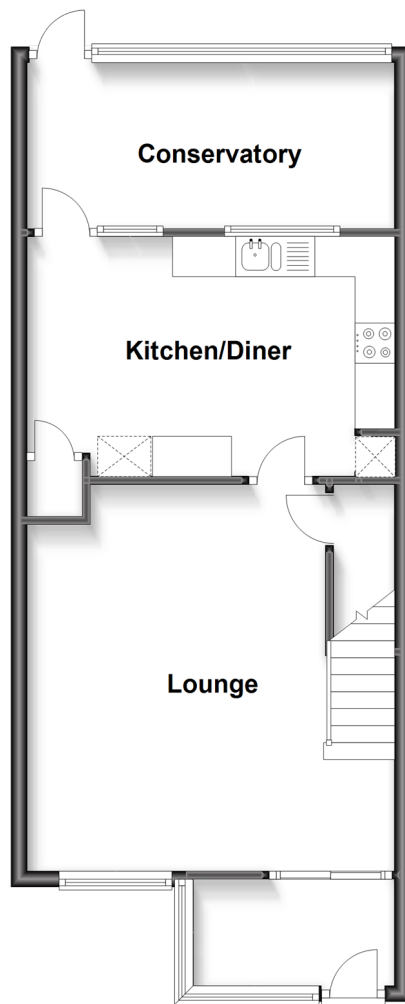
- 3 bedroom terraced house
- Ample living space with a spacious lounge and kitchen/diner
- Rear vehicle access
- Great location for access to the A2/M2
- Fantastic catchment area to various primary and secondary Schools

Call Strood - 01634 716597 ■ wardsofkent.co.uk

- Legal advice should be taken to verify fixtures/fittings, planning, alterations and/or lease details
- Our Homewise partnership offer a 'Home for Life' plan to buyers over 60, granting a lifetime lease for your protection and reducing the purchase price by up to 59%

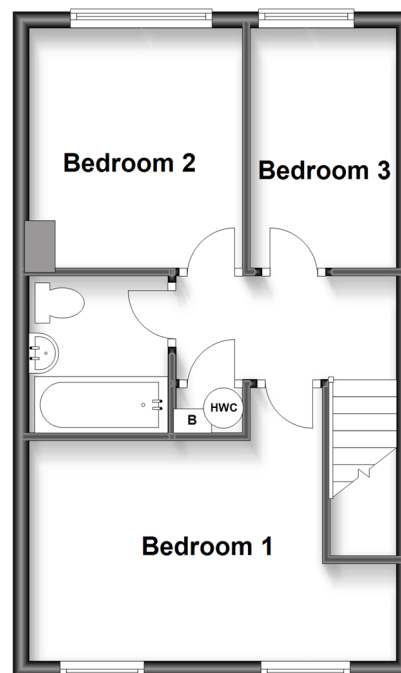
Ground Floor

Approx. 50.2 sq. metres (539.9 sq. feet)



First Floor

Approx. 36.5 sq. metres (392.4 sq. feet)



Accommodation

GROUND FLOOR

Entrance Hall

Lounge: 15'10 x 15'2 (4.83m x 4.63m)

Kitchen/Diner: 15'3 x 9'9 (4.65m x 2.97m)

Conservatory: 14'10 x 6'5 (4.52m x 1.96m)

FIRST FLOOR

Landing

Bedroom 1: 15'2 x 9'2 (4.63m x 2.80m)

Bedroom 2: 10'6 x 8'10 (3.20m x 2.69m)

Bedroom 3: 9'10 x 8'11 (3.00m x 2.72m)

Bathroom: 6'5 x 5'9 (1.96m x 1.75m)

OUTSIDE

Front Garden

Rear Garden

Rear Vehicle Access

■ Appliances & services are untested, dimensions are approximate and floor plans are not to scale