



OVER 60?

Secure this property
for up to **59% less!**

Price

£170,000

Leasehold

1x  1x  1x 

**Belfry Drive, Hoo,
Rochester, Kent, ME3**

Wards
Helping you move forwards



Main features

- Spacious first floor apartment in a modern development
- Sociable kitchen/lounge and dining area
- Popular village location
- Allocated parking space
- Communal gardens

Accommodation

FIRST FLOOR

Entrance Hall

Lounge/Dining/Kitchen: 20'6 (6.25m) x 16'5 (5.01m) narrowing to 13'0 (3.97m)

Bedroom: 14'6 x 10'2 (4.42m x 3.10m)

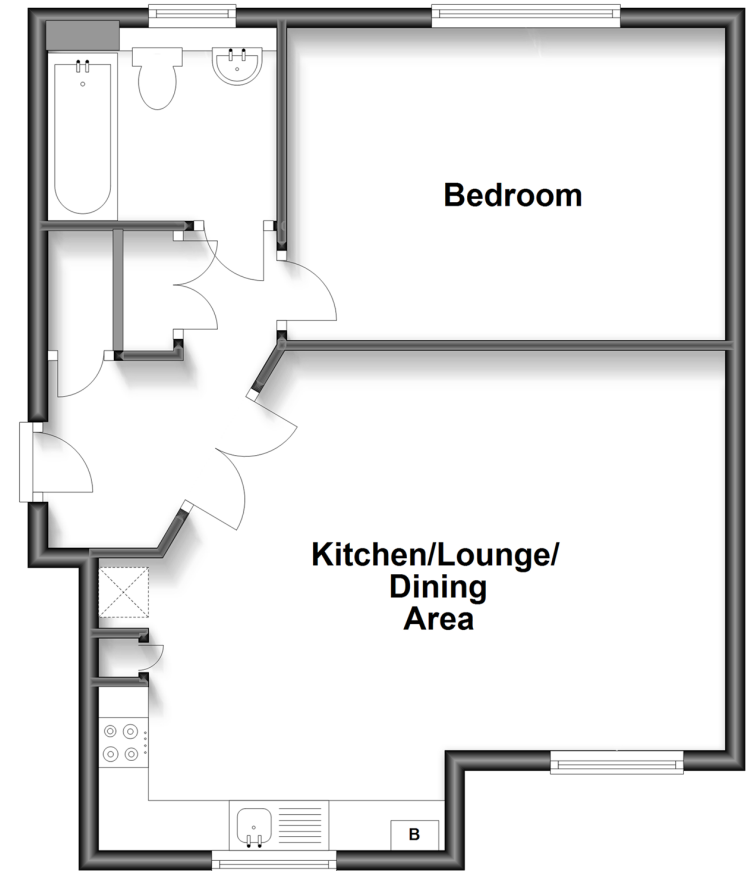
Bathroom: 7'7 x 5'6 (2.31m x 1.68m)

OUTSIDE

Allocated Parking Space

First Floor

Approx. 51.7 sq. metres (556.1 sq. feet)



Call Strood - 01634 716597 ■ wardsofkent.co.uk

- Legal advice should be taken to verify fixtures/fittings, planning, alterations and/or lease details
- Appliances & services are untested, dimensions are approximate and floor plans are not to scale
- Through a Homewise Home For Life Plan people aged 60+ can secure this property for up to 59% less, by purchasing a Lifetime Lease.



11845476/20230224/NW/NW