



Price
£350,000

Freehold

3x  1x  2x 

**Quixote Crescent,
Frindsbury, Rochester,
Kent, ME2**

OVER 60?

Secure this property
for up to **59% less!**

Wards
Helping you move forwards



Main features

- **3 bedroom semi-detached house**
- **Driveway to front and rear garden with side access**
- **Lounge and dining area**
- **Kitchen with handy bar area/utility area**
- **Situated in a popular location close to schools and amenities**
- **Walking distance to railway station**

Accommodation

GROUND FLOOR

Entrance Hall

Lounge: 12'8 x 11'7 (3.86m x 3.53m)

Dining Area: 9'11 x 9'8 (3.02m x 2.95m)

Kitchen: 12'0 x 9'0 (3.66m x 2.75m)

Bar Area: 9'5 x 5'11 (2.87m x 1.80m)

FIRST FLOOR

Landing

Bedroom 1: 12'8 x 9'6 (3.86m x 2.90m)

Bedroom 2: 11'9 x 9'1 (3.58m x 2.77m)

Bedroom 3: 6'0 x 5'11 (1.83m x 1.80m)

Bathroom: 8'3 x 5'6 (2.52m x 1.68m)

OUTSIDE

Driveway

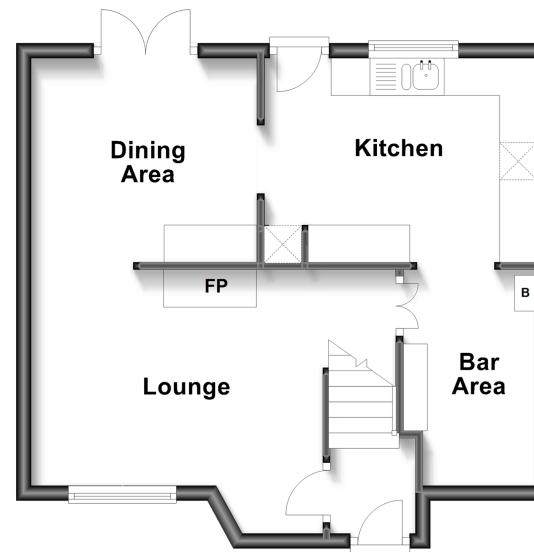
Side Access

Front Garden

Rear Garden

Ground Floor

Approx. 40.7 sq. metres (437.6 sq. feet)



First Floor

Approx. 39.0 sq. metres (420.2 sq. feet)



Call Strood - 01634 716597 ■ wardsofkent.co.uk

- Legal advice should be taken to verify fixtures/fittings, planning, alterations and/or lease details
- Through a Homewise Home For Life Plan people aged 60+ can secure this property for up to 59% less, by purchasing a Lifetime Lease.

■ Appliances & services are untested, dimensions are approximate and floor plans are not to scale



11845489/20230126/DV/CM