



Price
£350,000

Freehold

3x  1x  1x 

**Reedham Crescent,
Cliffe Woods,
Rochester, Kent, ME3**

Wards
Helping you move forwards



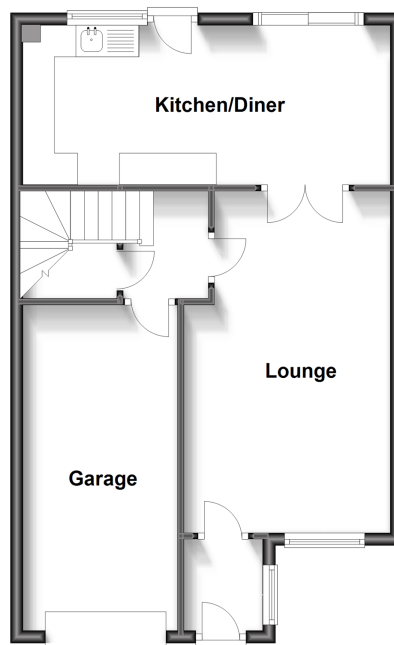
Main features

- Rarely available semi-detached home in Cliffe Woods village
- Offered for sale with no onward chain
- Private and secluded garden that backs onto the woods
- In need of modernisation
- Driveway for 2/3 cars and an integral garage.

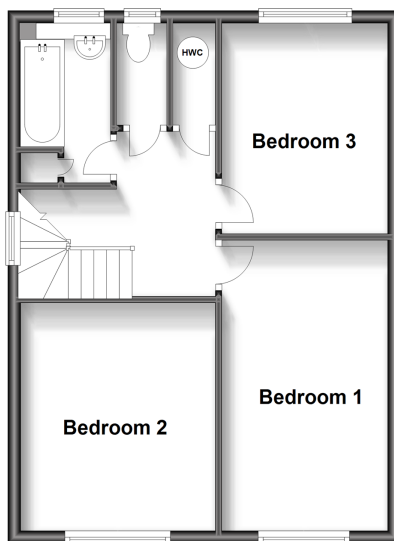
Call Strood - 01634 716597 ■ wardsofkent.co.uk

■ Legal advice should be taken to verify fixtures/fittings, planning, alterations and/or lease details

Ground Floor
Approx. 53.1 sq. metres (571.2 sq. feet)



First Floor
Approx. 47.1 sq. metres (507.4 sq. feet)



Accommodation

GROUND FLOOR

Entrance Hall
Lounge: 17'10 x 10'9 (5.44m x 3.28m)
Inner Hallway
Kitchen/Diner: 19'4 x 7'8 (5.90m x 2.34m)

FIRST FLOOR

Landing
Bedroom 1: 12'0 x 10'1 (3.66m x 3.08m)
Bedroom 2: 15'3 x 8'8 (4.65m x 2.64m)
Bedroom 3: 11'0 x 8'8 (3.36m x 2.64m)
Bathroom: 7'9 x 4'7 (2.36m x 1.40m)
Toilet

OUTSIDE

Driveway
Integral Garage: 17'8 x 8'0 (5.39m x 2.44m)
Front Garden
Rear Garden



11845546/20231020/JC/NW

■ Appliances & services are untested, dimensions are approximate and floor plans are not to scale