



**Guide Price**  
**£425,000**

**Freehold**

4x  1x  1x 

**Southwark Road,  
Strood, Rochester, Kent,  
ME2**

**OVER 60?**

Secure this property  
for up to **59% less!**

*Wards*  
Helping you move forwards





## Main features

- 4 bedroom end of terrace house in popular location
- Driveway for multiple vehicles and a detached garage with electric and power
- Solar panels for energy efficiency
- Easy access to A2/M2
- Close to local primary and secondary schools

## Accommodation

### GROUND FLOOR

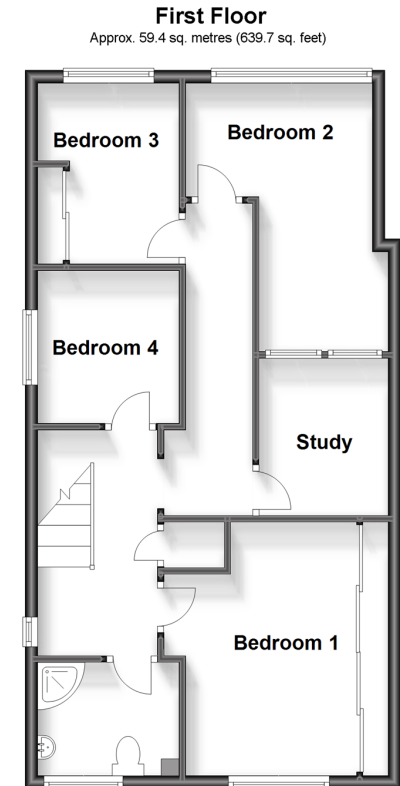
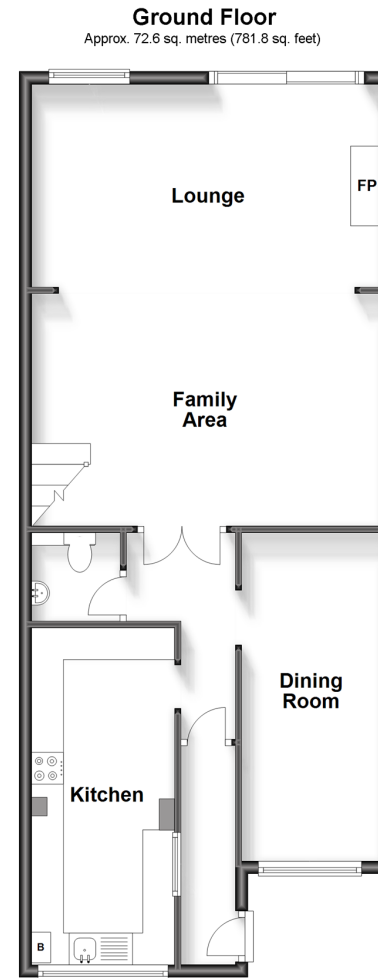
Entrance Hall  
 Dining Room : 16'9 x 7'5 (5.11m x 2.26m)  
 Kitchen : 17'11 x 6'11 (5.46m x 2.11m)  
 Cloakroom  
 Lounge/Family Area: 23'3 x 18'3 (7.09m x 5.57m)

### FIRST FLOOR

Landing  
 Bedroom 1: 13'8 x 9'0 (4.17m x 2.75m)  
 Bedroom 2: 14'10 x 9'7 (4.52m x 2.92m)  
 Bedroom 3: 9'8 x 6'8 (2.95m x 2.03m)  
 Bedroom 4: 8'0 x 7'9 (2.44m x 2.36m)  
 Study: 8'2 x 7'1 (2.49m x 2.16m)  
 Shower Room : 6'7 x 5'6 (2.01m x 1.68m)

### OUTSIDE

Front Garden  
 Rear Garden  
 Driveway  
 Detached Garage



**Call Strood - 01634 716597 ■ [wardsofkent.co.uk](http://wardsofkent.co.uk)**

- Legal advice should be taken to verify fixtures/fittings, planning, alterations and/or lease details
- Appliances & services are untested, dimensions are approximate and floor plans are not to scale
- Through a Homewise Home For Life Plan people aged 60+ can secure this property for up to 59% less, by purchasing a Lifetime Lease.

