



**Price**

**£285,000**

2x  1x  1x 

**Peninsula Crescent, Hoo,  
Rochester, Kent, ME3**

*Wards*  
Helping you move forwards



## Main features

- **2 bedroom detached park home**
- **Driveway for 1 car**
- **Outside decked area overlooking marina**
- **Feel safe and secure within this gated community**
- **En-suite shower room with walk-in wardrobe**

## Accommodation

### GROUND FLOOR

Entrance Hall

Lounge : 15'4 x 12'3 (4.68m x 3.74m)

Kitchen/Diner: 20'10 x 9'0 (6.35m x 2.75m)

Bedroom 2: 10'2 x 9'10 (3.10m x 3.00m)

Utility Room : 6'1 x 5'5 (1.86m x 1.65m)

Bedroom 1: 10'8 x 9'6 (3.25m x 2.90m)

En-Suite Shower Room : 7'6 x 5'11 (2.29m x 1.80m)

Bathroom : 7'7 x 6'6 (2.31m x 1.98m)

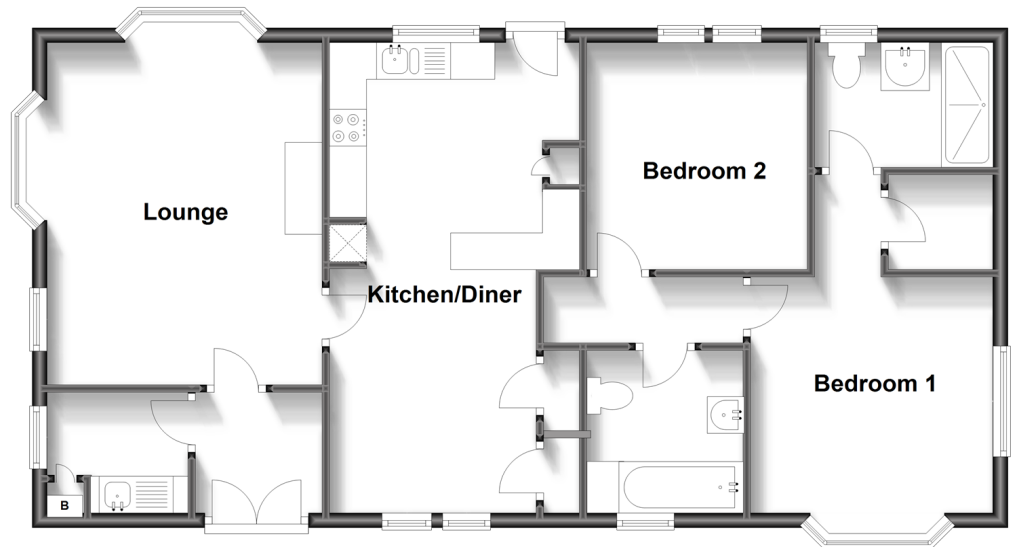
### OUTSIDE

Driveway

Decked Rear Garden

### Ground Floor

Approx. 82.4 sq. metres (887.2 sq. feet)



**Call Strood - 01634 716597 ■ [wardsofkent.co.uk](http://wardsofkent.co.uk)**

■ If buying to let, the energy rating will need to be improved to at least 'E' rating before you can let the property

■ Appliances & services are untested, dimensions are approximate and floor plans are not to scale

■ Legal advice should be taken to verify fixtures/fittings, planning, alterations and/or lease details



11845692/20230703/DV/CM