



**Price**  
**£250,000**

**Freehold**

2x  1x  1x 

**Green Lane, Isle Of  
Grain, Rochester, Kent,  
ME3**

**OVER 60?**

Secure this property  
for up to **59% less!**

*Wards*  
Helping you move forwards





## Main features

- 2 bedroom semi-detached bungalow
- Driveway for up to 4 cars and a detached garage
- Situated within a short walk of Grain coastal park
- Perfect for anyone looking to downsize
- A quiet village location close to school and shop

## Accommodation

### GROUND FLOOR

Entrance Hall

Lounge : 16'3 x 10'7 (4.96m x 3.23m)

Bathroom : 6'3 x 5'6 (1.91m x 1.68m)

Bedroom 1: 10'8 x 9'10 (3.25m x 3.00m)

Bedroom 2: 8'11 x 8'9 (2.72m x 2.67m)

Kitchen : 9'10 x 8'10 (3.00m x 2.69m)

Conservatory: 8'1 x 8'0 (2.47m x 2.44m)

### OUTSIDE

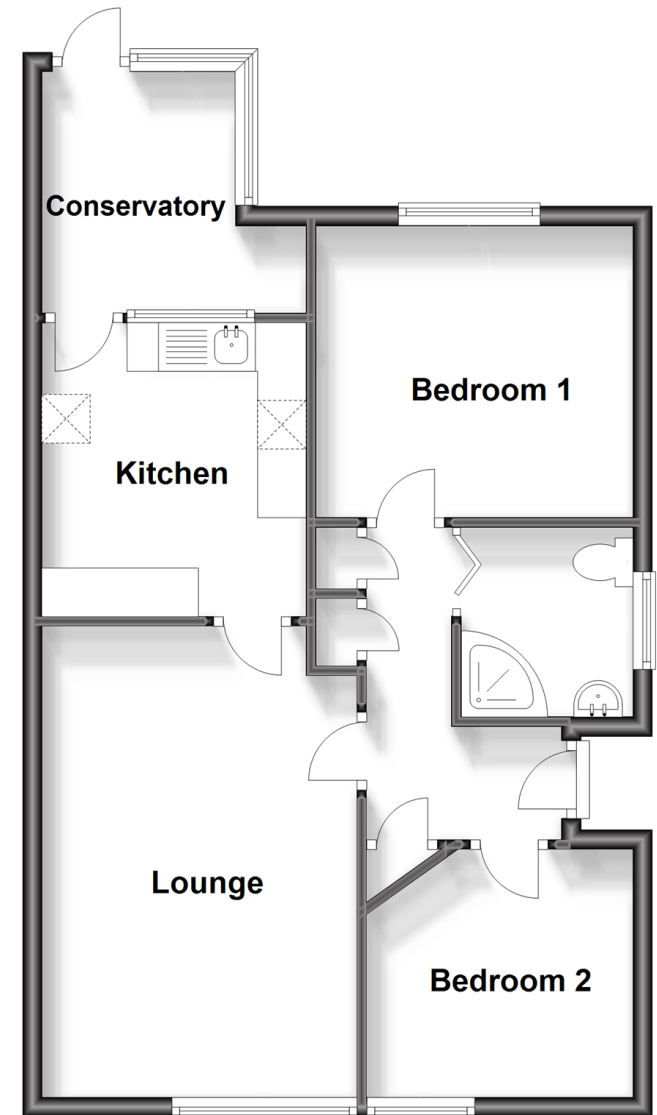
Driveway

Garage

Rear Garden

## Ground Floor

Approx. 56.9 sq. metres (612.0 sq. feet)



**Call Strood - 01634 716597 ■ [wardsofkent.co.uk](http://wardsofkent.co.uk)**

- Legal advice should be taken to verify fixtures/fittings, planning, alterations and/or lease details
- Appliances & services are untested, dimensions are approximate and floor plans are not to scale
- Through a Homewise Home For Life Plan people aged 60+ can secure this property for up to 59% less, by purchasing a Lifetime Lease.



11845747/20230809/JC/CM