



**Offers In  
Excess Of  
£220,000  
Leasehold**

2x  2x  1x 

**Knights Templar Way,  
Strood, Rochester, Kent,  
ME2**

*Wards*  
Helping you move forwards





## Main features

- Sought after Medway Valley Park with leisure facilities, cinema and choice of restaurants
- Ideal first time buy
- Allocated parking space
- En-suite shower room
- Great transport links with easy access to A2/M2

## Accommodation

### GROUND FLOOR

Entrance Hall

Lounge: 13'9 x 13'6 (4.19m x 4.12m)

Kitchen: 7'8 x 6'8 (2.34m x 2.03m)

Bedroom 1: 13'8 x 8'4 (4.17m x 2.54m)

En-Suite Shower Room: 8'4 x 6'3 (2.54m x 1.91m)

Bedroom 2: 11'7 x 6'4 (3.53m x 1.93m)

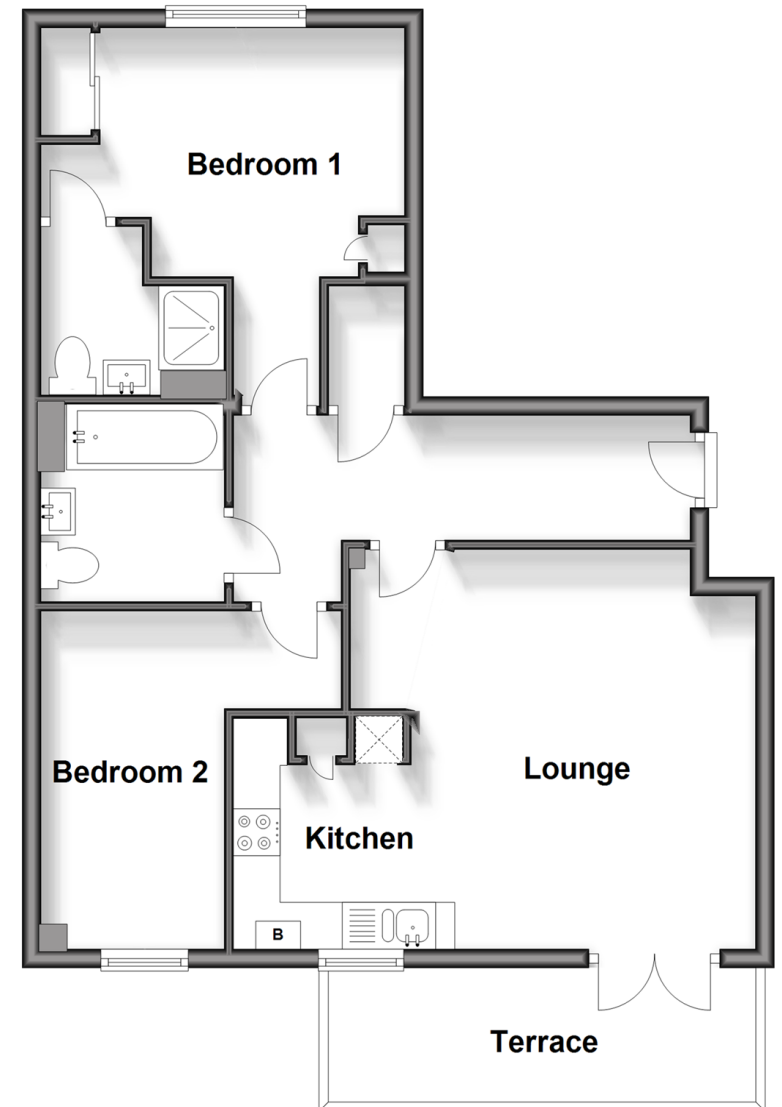
Bathroom: 6'8 x 6'1 (2.03m x 1.86m)

### OUTSIDE

Allocated Parking Space

## Ground Floor

Approx. 58.3 sq. metres (628.0 sq. feet)



**Call Strood - 01634 716597 ■ [wardsof Kent.co.uk](http://wardsof Kent.co.uk)**

- Legal advice should be taken to verify fixtures/fittings, planning, alterations and/or lease details
- Appliances & services are untested, dimensions are approximate and floor plans are not to scale