



Price
£325,000

Freehold

2x  1x  1x 

**Grasmere Grove,
Frindsbury, Rochester,
Kent, ME2**

Wards
Helping you move forwards



Main features

- 2 double bedroom semi-detached bungalow in a cul-de-sac position
- Vacant possession
- Close to amenities, bus stop and access to the A2/M2
- Conservatory, enclosed rear garden
- Potential to extend subject to the necessary planning permission being obtained

Accommodation

GROUND FLOOR

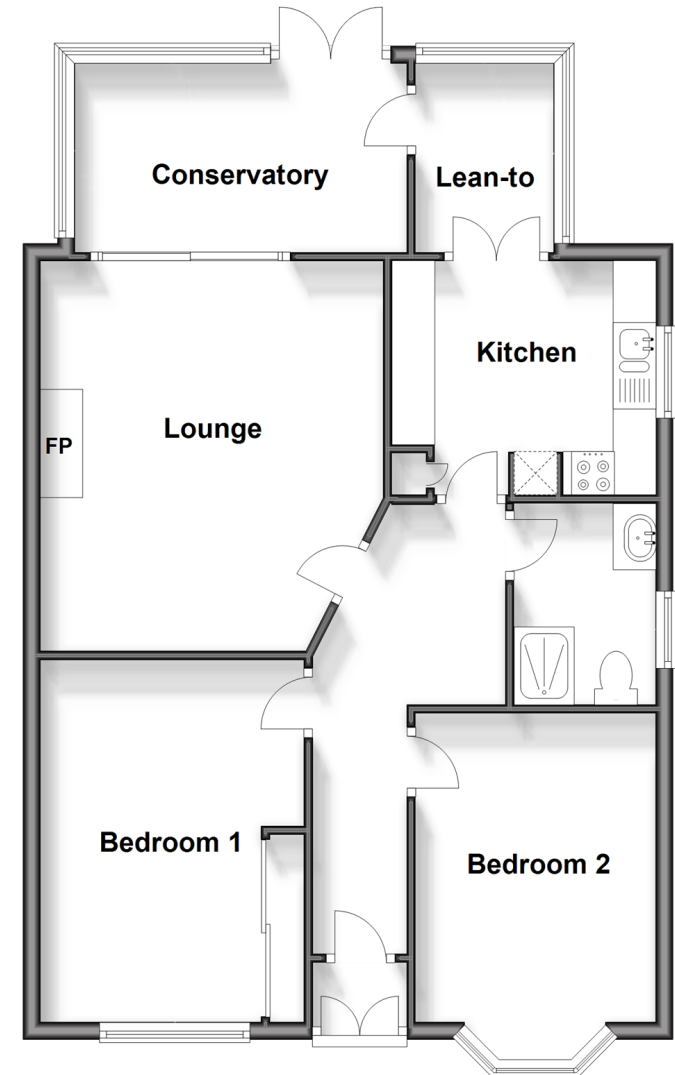
Entrance Porch
 Entrance Hall
 Lounge : 14'7 x 13'3 (4.45m x 4.04m)
 Conservatory : 13'0 x 7'1 (3.97m x 2.16m)
 Kitchen : 10'2 x 8'5 (3.10m x 2.57m)
 Lean To : 7'0 x 5'5 (2.14m x 1.65m)
 Shower Room
 Bedroom 1: 13'4 x 8'1 (4.07m x 2.47m)
 Bedroom 2: 11'9 x 9'1 (3.58m x 2.77m)

OUTSIDE

Driveway
 Garage
 Rear Garden

Ground Floor

Approx. 76.2 sq. metres (819.9 sq. feet)



Call Strood - 01634 716597 ■ wardsof Kent.co.uk

- Legal advice should be taken to verify fixtures/fittings, planning, alterations and/or lease details
- Appliances & services are untested, dimensions are approximate and floor plans are not to scale



11845915/20240105/DV/JC