



Price
£525,000

Freehold

5x  2x  2x 

**Mill Close, Frindsbury,
Rochester, Kent, ME2**

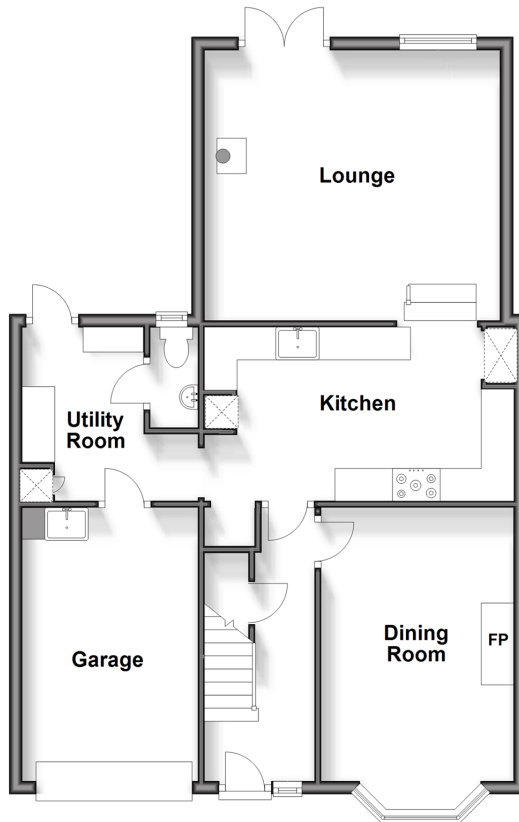
OVER 60?

Secure this property
for up to **59% less!**

Wards
Helping you move forwards

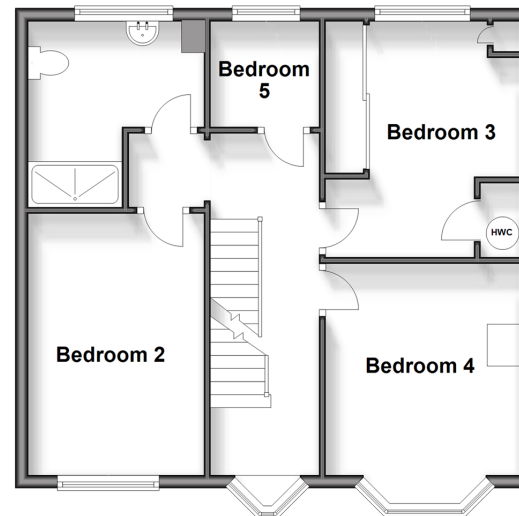
Split Level Ground Floor

Approx. 71.6 sq. metres (771.1 sq. feet)



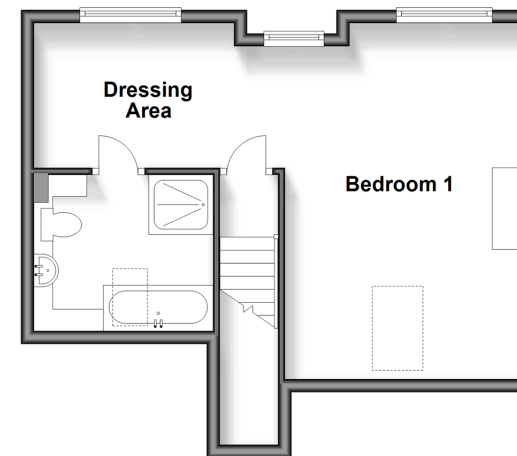
First Floor

Approx. 52.5 sq. metres (565.0 sq. feet)



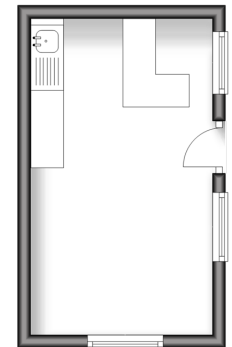
Second Floor

Approx. 39.2 sq. metres (421.8 sq. feet)



Outbuilding

Approx. 13.5 sq. metres (145.2 sq. feet)



Accommodation

SPLIT LEVEL GROUND FLOOR

Entrance Hall
Dining Room : 17'4 x 10'3 (5.29m x 3.13m)
Kitchen : 15'6 x 8'7 (4.73m x 2.62m)
Lounge: 15'10 x 13'0 (4.83m x 3.97m)
Utility Room : 8'7 x 6'0 (2.62m x 1.83m)
Cloakroom

FIRST FLOOR

Landing
Bedroom 2: 14'5 x 10'6 (4.40m x 3.20m)
Bedroom 3: 13'6 x 8'9 (4.12m x 2.67m)
Bedroom 4: 12'2 x 8'0 (3.71m x 2.44m)
Bedroom 5: 6'0 x 5'9 (1.83m x 1.75m)
Bathroom

SECOND FLOOR

Bedroom 1 : 17'1 x 10'5 (5.21m x 3.18m)
En-Suite Shower Room : 8'8 x 7'8 (2.64m x 2.34m)
Dressing Area

OUT BUILDING

Out Building

OUTSIDE

Driveway
Rear Garden



Main features

- Price Range £525,000-£550,000
- Spacious extended accommodation over 3 floors
- Garage and driveway for 3 cars
- Kitchen and separate utility room
- Main bedroom with dressing area and en-suite shower room
- Outbuilding in the garden with a hot tub
- Views over Medway to the rear



Nearest Schools

Primary Schools: English Martyrs' Catholic Primary 0.2 miles, Hilltop Primary 0.2 miles, Temple Mill Primary 0.2 miles
Secondary Schools: Abbey Court Community Special School 0.8 miles, King's School, Rochester 1.0 miles,



Transport Information

Train Stations: Strood 0.5 miles, Rochester 1.3 miles, Chatham 1.8 miles



Address

Mill Close, Frindsbury, Rochester, Kent, ME2



Directions

For directions to this property please contact us.



Wards
Helping you move forwards

Call Strood Branch 01634 716597 ■ wardsofkent.co.uk



- Legal advice should be taken to verify fixtures/fittings, planning, alterations and/or lease details
- Appliances & services are untested, dimensions are approximate and floor plans are not to scale
- Through a Homewise Home For Life Plan people aged 60+ can secure this property for up to 59% less, by purchasing a Lifetime Lease.



11845948/20240419/DV/CM