



OVER 60?

Secure this property
for up to **59% less!**

Price

£425,000

Freehold

3x  1x  2x 

**Yantlet Drive, Strood,
Rochester, Kent, ME2**

Wards
Helping you move forwards



Main features

- Driveway for 2 cars and garage
- Sought after location on the desirable Knights Place
- Close to transport links for the A2/M2
- Lounge, separate dining room and a Conservatory giving further living space
- Close to primary and secondary schools and Strood Leisure Centre

Accommodation

GROUND FLOOR

Entrance Porch
Entrance Hall
Kitchen : 13'4 x 10'0 (4.07m x 3.05m)
Dining Room: 15'5 x 8'9 (4.70m x 2.67m)
Lounge: 20'10 x 12'1 (6.35m x 3.69m)
Conservatory

FIRST FLOOR

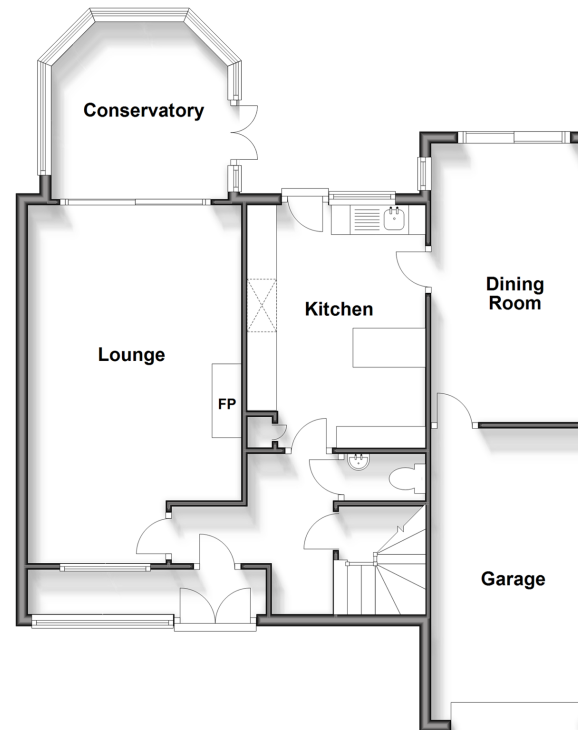
Landing
Bedroom 1: 11'10 x 11'7 (3.61m x 3.53m)
Bedroom 2: 9'9 x 6'3 (2.97m x 1.91m)
Bedroom 3: 8'1 x 7'5 (2.47m x 2.26m)
Bathroom

OUTSIDE

Driveway
Garage
Rear Garden

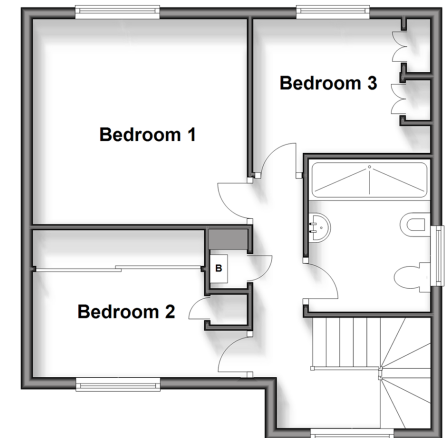
Ground Floor

Approx. 82.5 sq. metres (887.9 sq. feet)



First Floor

Approx. 43.6 sq. metres (468.9 sq. feet)



Call Strood - 01634 716597 ■ wardsofkent.co.uk

■ Legal advice should be taken to verify fixtures/fittings, planning, alterations and/or lease details
■ Through a Homewise Home For Life Plan people aged 60+ can secure this property for up to 59% less, by purchasing a Lifetime Lease.

■ Appliances & services are untested, dimensions are approximate and floor plans are not to scale



11845954/20240316/DV/CM