



**Guide Price**  
**£600,000**

**Freehold**

3x  1x  3x 

**Millfordhope Road,  
Strood, Rochester, Kent,  
ME2**

**OVER 60?**

Secure this property  
for up to **59% less!**

*Wards*  
Helping you move forwards

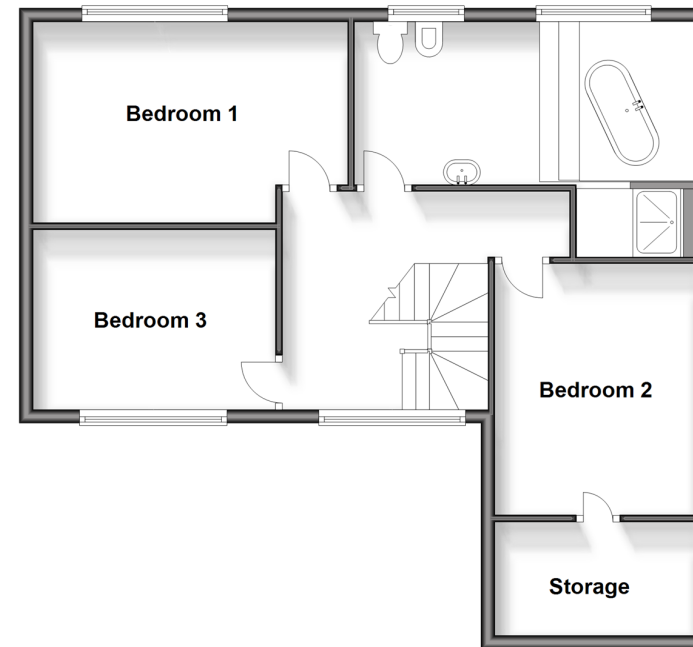
## Ground Floor

Approx. 112.7 sq. metres (1212.7 sq. feet)



## Split Level First Floor

Approx. 65.0 sq. metres (699.9 sq. feet)



## Accommodation

### GROUND FLOOR

Entrance Hall  
Cloakroom  
Lounge: 21'8 x 12'0 (6.61m x 3.66m)  
Dining Area: 18'10 x 10'10 (5.74m x 3.30m)  
Study: 11'4 x 9'0 (3.46m x 2.75m)  
Kitchen/Breakfast Area: 14'6 x 11'3 (4.42m x 3.43m)  
Utility Area

### SPLIT LEVEL FIRST FLOOR

Landing  
Bedroom 1: 15'1 x 10'0 (4.60m x 3.05m)  
Bedroom 2: 11'5 x 8'9 (3.48m x 2.67m)  
Bedroom 3: 12'0 x 8'9 (3.66m x 2.67m)  
Bathroom: 15'10 x 8'2 (4.83m x 2.49m)

### OUTSIDE

Driveway  
Garage: 18'0 x 8'2 (5.49m x 2.49m)  
Front Garden  
Rear Garden





## Main features

- Fabulous extended home in a sought after location
- Lounge, dining area, study and a 15' bathroom
- Formerly 4 double bedrooms that can be converted back
- Easy access to the A2/M2, primary and secondary schools
- Within 2 miles of historic town of Rochester and mainline railway station



### Nearest Schools

Primary Schools: Bligh Junior School, Elaine Primary, Cedar Primary School  
Secondary Schools: Strood Academy, Abbey Court Community Special School, Gad's Hill School



### Transport Information

Train Stations: Strood 1.6 miles, Cuxton 1.7 miles, Higham 1.9 miles



### Address

Millfordhope Road, Strood, Rochester, Kent, ME2



### Directions

For directions to this property please contact us.





**Wards**  
Helping you move forwards

Call Strood Branch 01634 716597 ■ [wardsofkent.co.uk](http://wardsofkent.co.uk)



■ Legal advice should be taken to verify fixtures/fittings, planning, alterations and/or lease details ■ Appliances & services are untested, dimensions are approximate and floor plans are not to scale  
■ Through a Homewise Home For Life Plan people aged 60+ can secure this property for up to 59% less, by purchasing a Lifetime Lease.



11845977/20240412/MC/JC