



OVER 60?

Secure this property
for up to **59% less!**

Price

£600,000

Freehold

4x  2x  1x 

**Rochester Road, Cuxton,
Rochester, Kent, ME2**

Wards
Helping you move forwards

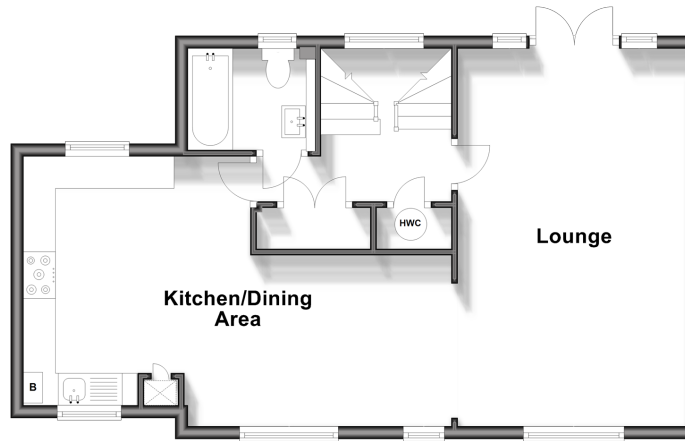
Ground Floor

Approx. 55.6 sq. metres (598.6 sq. feet)



First Floor

Approx. 56.0 sq. metres (603.1 sq. feet)



Second Floor

Approx. 24.1 sq. metres (259.2 sq. feet)



Accommodation

GROUND FLOOR

Entrance Hall

Utility Room : 5'8 x 5'6 (1.73m x 1.68m)

Bedroom 1: 14'4 x 10'3 (4.37m x 3.13m)

En-Suite Shower Room

Bedroom 3: 10'8 x 10'0 (3.25m x 3.05m)

Bedroom 4: 13'2 x 8'5 (4.02m x 2.57m)

Bathroom : 6'4 x 5'8 (1.93m x 1.73m)

FIRST FLOOR

Landing

Lounge: 25'1 x 10'9 (7.65m x 3.28m)

Kitchen/Dining Area: 24'5 (7.45m) x 11'3 (3.43m) narrowing to 8'7 (2.62m)

SECOND FLOOR

Landing

Bedroom 2: 16'7 x 11'10 (5.06m x 3.61m)

OUTSIDE

Driveway

Rear Garden



Main features

- Located in the sought after Cuxton Village
- High vaulted ceilings that provide a spacious and airy feel
- Excellent transport links for easy commuting
- Modern design and spacious rooms providing plenty of room for the family
- Generous size double bedrooms



Nearest Schools

Primary Schools: Cuxton Community Junior School, Halling Primary, Delce Junior School. Secondary Schools: Strood Academy, Hundred of Hoo Academy



Transport Information

Train Stations: Cuxton 0.2 miles, Halling 1.6 miles, Strood 3.0 miles



Address

Rochester Road, Cuxton, Rochester, Kent, ME2



Directions

For directions to this property please contact us.



Wards
Helping you move forwards

Call Strood Branch 01634 716597 ■ wardsofkent.co.uk



■ Legal advice should be taken to verify fixtures/fittings, planning, alterations and/or lease details ■ Appliances & services are untested, dimensions are approximate and floor plans are not to scale
■ Through a Homewise Home For Life Plan people aged 60+ can secure this property for up to 59% less, by purchasing a Lifetime Lease.



11846012/20240315/DV/DM