



OVER 60?

Secure this property
for up to **59% less!**

Price

£300,000

Freehold

3x  1x  1x 

**Carnation Road, Strood,
Rochester, Kent, ME2**

Wards
Helping you move forwards



Main features

- Great first time family home close to schools and amenities
- 19' kitchen/diner
- Covered pergola, side access and enclosed rear garden
- Excellent access to A2/M2
- Rede Park is within a quarter of a mile, ideal for walking the dog
- Strood Leisure Centre and mainline railway station are within a mile and a half

Accommodation

GROUND FLOOR

Entrance Hall
Kitchen/Diner: 19'0 x 8'10 (5.80m x 2.69m)
Lounge: 12'6 x 12'3 (3.81m x 3.74m)

FIRST FLOOR

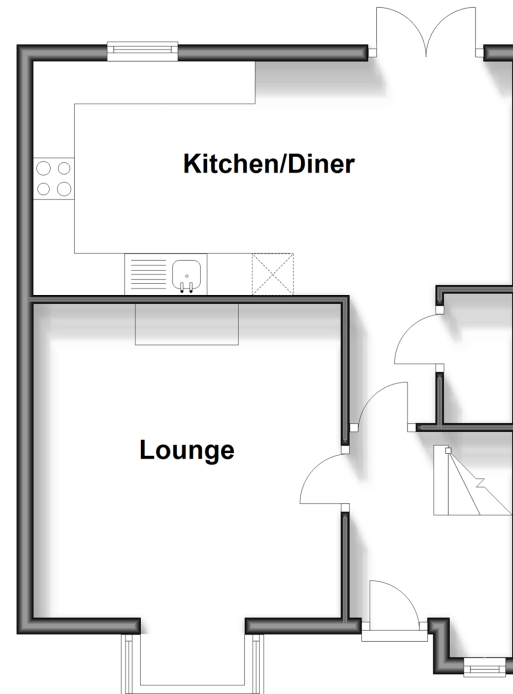
Landing
Bedroom 1: 11'0 x 10'1 (3.36m x 3.08m)
Bedroom 2: 11'4 x 9'3 (3.46m x 2.82m)
Bedroom 3: 9'0 x 8'0 (2.75m x 2.44m)
Bathroom : 7'6 x 5'8 (2.29m x 1.73m)

OUTSIDE

Front Garden
Rear Garden

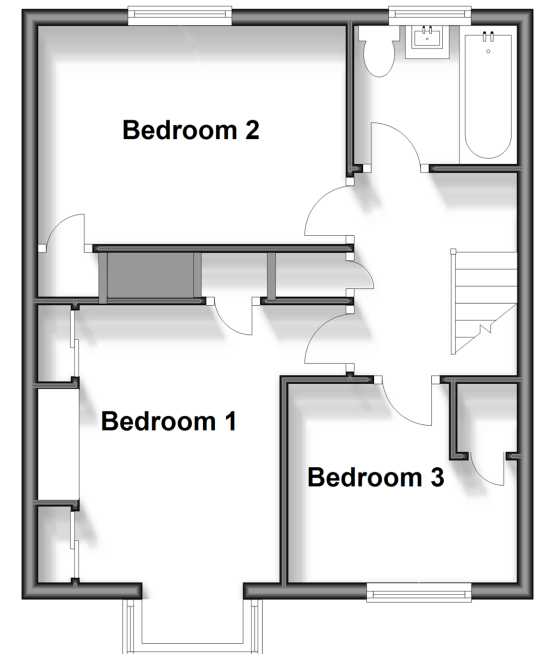
Ground Floor

Approx. 39.9 sq. metres (429.6 sq. feet)



First Floor

Approx. 39.5 sq. metres (424.8 sq. feet)



Call Strood - 01634 716597 ■ wardsofkent.co.uk

■ Legal advice should be taken to verify fixtures/fittings, planning, alterations and/or lease details
■ Through a Homewise Home For Life Plan people aged 60+ can secure this property for up to 59% less, by purchasing a Lifetime Lease.

■ Appliances & services are untested, dimensions are approximate and floor plans are not to scale