



Price
£400,000
Commonhold

3x  2x  1x 

**Church Street, Cliffe,
Kent, Kent, ME3**

OVER 60?

Secure this property
for up to **59% less!**

Wards
Helping you move forwards



Main features

- **3 bedroom semi-detached house in a sought after village location**
- **Allocated parking for 2 cars**
- **Downstairs cloakroom and an en-suite shower room**
- **Open plan living space**
- **Kitchen with integrated appliances and a separate utility area**
- **No onward chain**

Accommodation

GROUND FLOOR

Entrance Hall
Cloakroom
Utility Room
Lounge: 16'7 x 11'5 (5.06m x 3.48m)
Kitchen/Diner : 21'10 x 14'6 (6.66m x 4.42m)

FIRST FLOOR

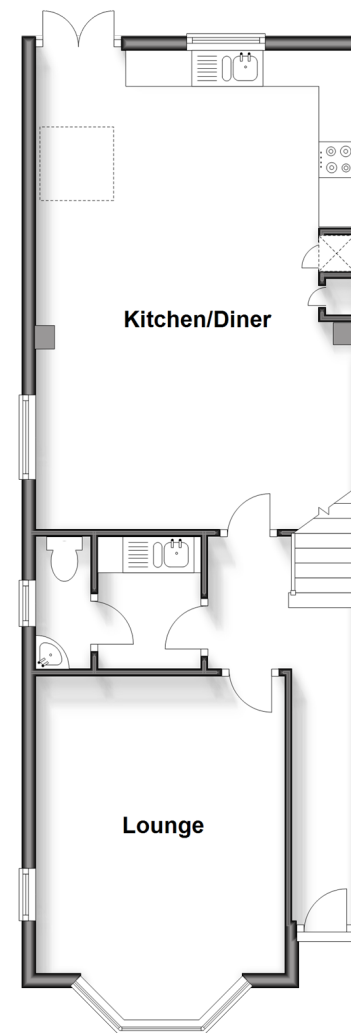
Landing
Bedroom 1 : 14'11 x 11'0 (4.55m x 3.36m)
En-Suite Shower Room
Bedroom 2 : 14'0 x 9'7 (4.27m x 2.92m)
Bedroom 3 : 8'10 x 8'6 (2.69m x 2.59m)
Bathroom

OUTSIDE

2 Allocated Parking Spaces
Front Garden
Rear Garden

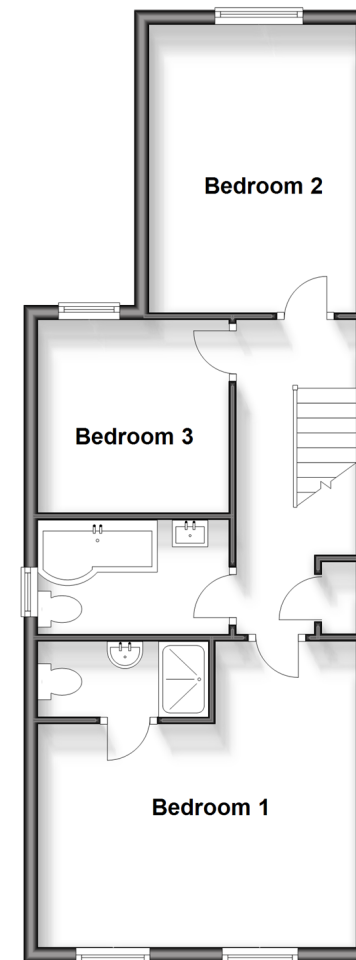
Ground Floor

Approx. 57.2 sq. metres (615.2 sq. feet)



First Floor

Approx. 51.1 sq. metres (550.4 sq. feet)



Call Strood - 01634 716597 ■ wardsofkent.co.uk

- Legal advice should be taken to verify fixtures/fittings, planning, alterations and/or lease details
- Appliances & services are untested, dimensions are approximate and floor plans are not to scale
- Through a Homewise Home For Life Plan people aged 60+ can secure this property for up to 59% less, by purchasing a Lifetime Lease.



11846090/20240427/DV/CM