



OVER 60?

Secure this property
for up to **59% less!**

Price

£550,000

Freehold

4x  1x  1x 

**Windmill Road,
Whitstable, Kent, CT5**

Wards
Helping you move forwards



Main features

- **Integral garage and off-road parking**
- **Workshop with power in the spacious rear garden**
- **Well proportioned bedrooms**
- **A bright and nicely presented home, with distant sea views**
- **A spacious kitchen and large lounge provide ample living space downstairs**

Accommodation

GROUND FLOOR

Hallway

Kitchen: 20'6 x 11'9 (6.25m x 3.58m)

Lounge : 22'3 x 13'6 at widest point (6.79m x 4.12m)

Cloakroom

FIRST FLOOR

Landing

Bedroom 1: 20'10 x 8'2 (6.35m x 2.49m)

Bedroom 2 : 10'10 x 10'5 (3.30m x 3.18m)

Bedroom 3: 10'10 x 9'5 (3.30m x 2.87m)

Bedroom 4: 13'10 x 8'0 (4.22m x 2.44m)

Bathroom

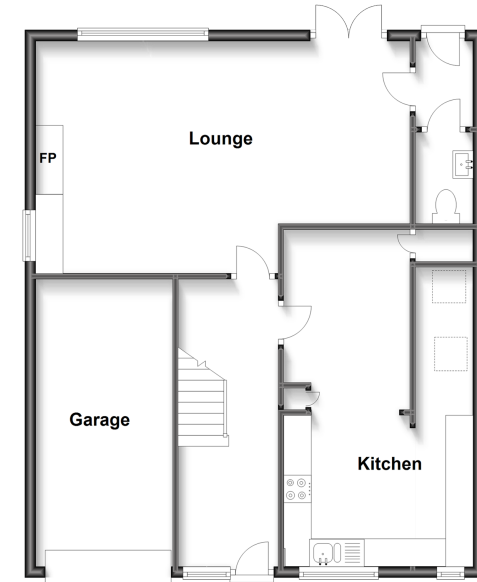
OUTSIDE

Driveway

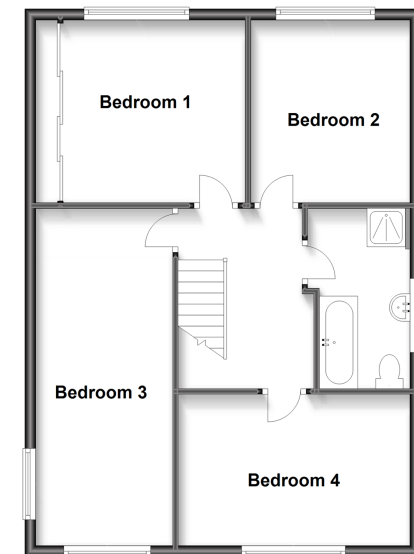
Integral Garage

Rear Garden

Ground Floor
Approx. 76.1 sq. metres (819.0 sq. feet)



First Floor
Approx. 65.1 sq. metres (701.0 sq. feet)



Call Whitstable - 01227 772272 ■ wardsofkent.co.uk

- Legal advice should be taken to verify fixtures/fittings, planning, alterations and/or lease details
- Appliances & services are untested, dimensions are approximate and floor plans are not to scale
- Through a Homewise Home For Life Plan people aged 60+ can secure this property for up to 59% less, by purchasing a Lifetime Lease.



12020801/20240302/AR/NF