



Price
£795,000

Freehold

3x  2x  1x 

**Pierpoint Road,
Whitstable, Kent, CT5**

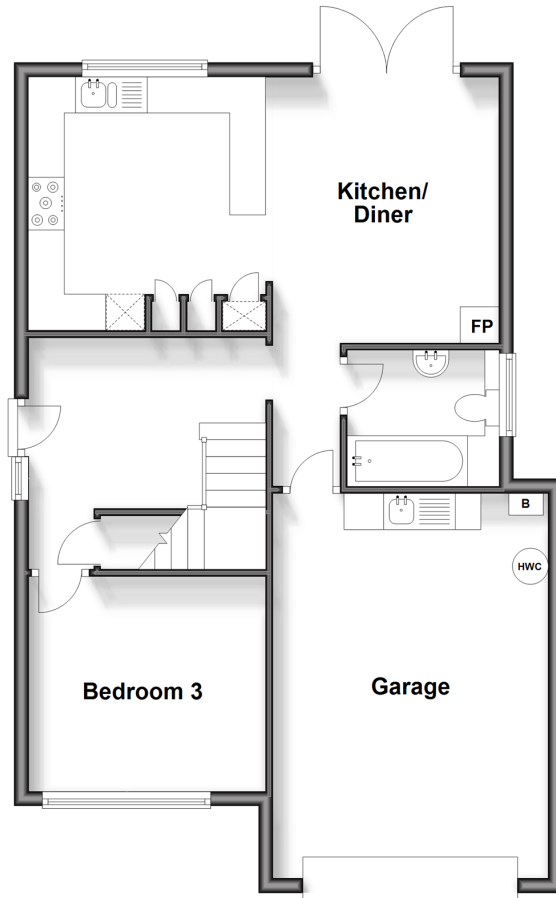
OVER 60?

Secure this property
for up to **59% less!**

Wards
Helping you move forwards

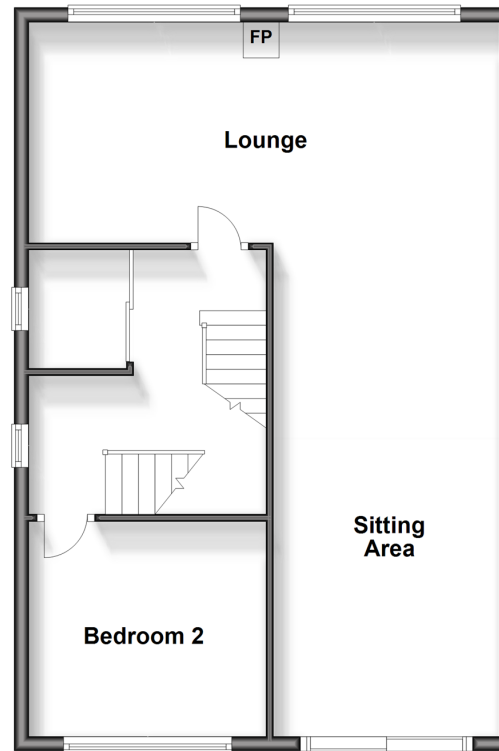
Ground Floor

Approx. 72.5 sq. metres (780.4 sq. feet)



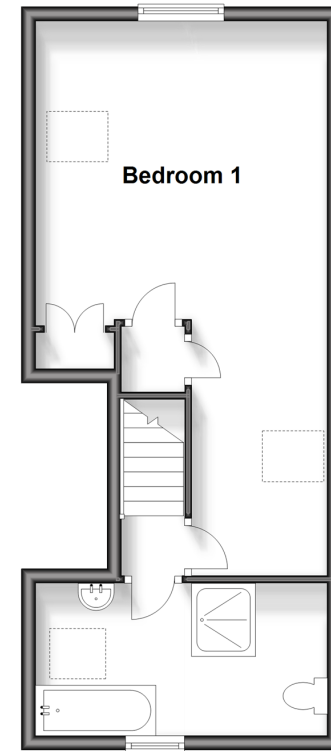
First Floor

Approx. 65.0 sq. metres (700.2 sq. feet)



Second Floor

Approx. 36.8 sq. metres (396.0 sq. feet)



Accommodation

GROUND FLOOR

Entrance Hallway
Bathroom: 7'0 x 6'0 (2.14m x 1.83m)
Kitchen/Diner : 21'7 x 14'2 (6.58m x 4.32m)
Bedroom 3 : 10'9 x 9'8 (3.28m x 2.95m)

FIRST FLOOR

Landing
Bedroom 2 : 10'9 x 9'9 (3.28m x 2.97m)
Lounge : 21'7 x 10'0 (6.58m x 3.05m)
Sitting Area : 22'2 x 10'5 (6.76m x 3.18m)
Balcony

SECOND FLOOR

Landing
Bedroom 1: 13'7 x 13'6 (4.14m x 4.12m)
Bathroom : 13'5 x 6'9 (4.09m x 2.06m)

OUTSIDE

Front Garden
Integrated Garage
Rear Garden
Workshop: 19'0 x 7'0 (5.80m x 2.14m)



Main features

- Stunning, far-reaching sea views across Whitstable to the Isle of Sheppey
- Positioned close to the town of Whitstable
- Integral garage with an electric roller door and 9kw battery storage for the 7kw solar panels
- Tiered, L-shaped rear garden, perfect for hosting
- The L-shaped double aspect lounge/sitting area is a large and versatile space benefiting from the beautiful views



Nearest Schools

Primary Schools: Joy Lane 0.3 miles, Whitstable Junior School 0.6 miles, Whitstable and Seasalter Endowed C of E Junior School 0.7 miles

Secondary Schools: The Whitstable School 0.7 miles



Transport Information

Train Stations: Whitstable 0.9 miles, Chestfield & Swalecliffe 2.1 miles, Herne Bay 4.3 miles



Address

Pierpoint Road, Whitstable, Kent, CT5



Directions

For directions to this property please contact us.



Call Whitstable Branch 01227 772272 ■ wardsofkent.co.uk



- Legal advice should be taken to verify fixtures/fittings, planning, alterations and/or lease details
- Appliances & services are untested, dimensions are approximate and floor plans are not to scale
- Through a Homewise Home For Life Plan people aged 60+ can secure this property for up to 59% less, by purchasing a Lifetime Lease.



12024375/20240402/NF/KW5