



Price
£385,000

Freehold

2x  1x  2x 

**Virginia Road,
Whitstable, Kent, CT5**

OVER 60?

Secure this property
for up to **59% less!**

Wards
Helping you move forwards



Main features

- Immaculate throughout with a modern kitchen and bathroom
- Driveway parking
- Under floor heated conservatory
- Low-maintenance and attractively presented rear garden
- Situated on the outskirts of Whitstable

Accommodation

GROUND FLOOR

Hallway

Kitchen: 11'6 x 8'10 (3.51m x 2.69m)

Lounge: 16'5 x 11'6 (5.01m x 3.51m)

Conservatory: 12'10 x 10'4 (3.91m x 3.15m)

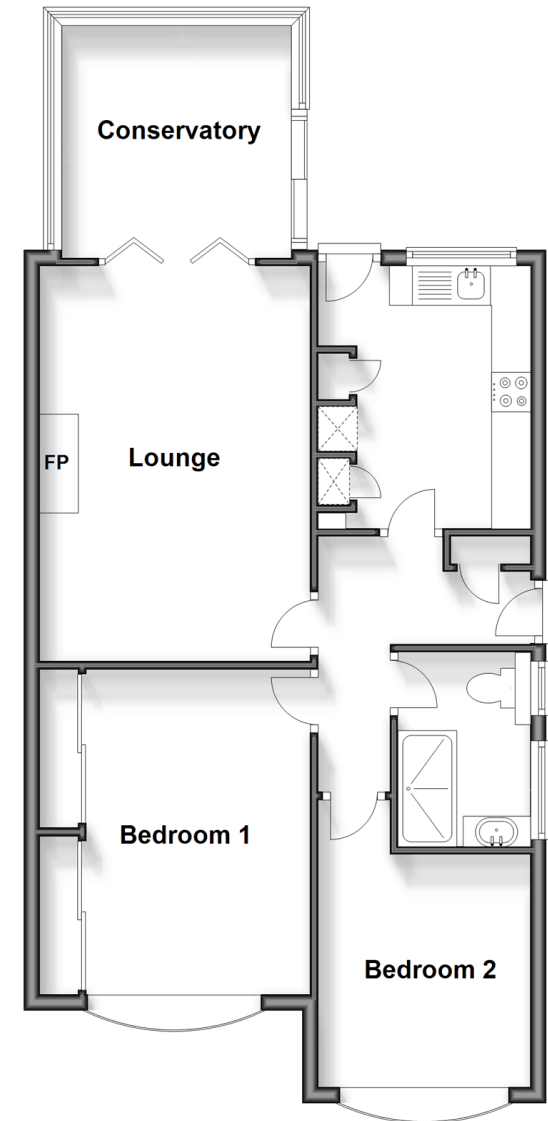
Shower Room

Bedroom 2 : 11'11 x 8'10 (3.63m x 2.69m)

Bedroom 1: 13'6 x 11'4 (4.12m x 3.46m)

Ground Floor

Approx. 70.7 sq. metres (761.2 sq. feet)



Call Whitstable - 01227 772272 ■ wardsofkent.co.uk

- Legal advice should be taken to verify fixtures/fittings, planning, alterations and/or lease details
- Appliances & services are untested, dimensions are approximate and floor plans are not to scale
- Through a Homewise Home For Life Plan people aged 60+ can secure this property for up to 59% less, by purchasing a Lifetime Lease.



12030539/20240429/AR/NF