



**OVER 60?**

You could get up to  
**59% off** the price!\*

**Price**  
**£495,000**

**Freehold**

2x  1x  1x 

**Windmill Road, Herne  
Bay, Kent, CT5**

*Wards*  
Helping you move forwards





## Main features

- Detached bungalow with conservatory
- Garage and parking to the side
- Good size garden
- No chain!
- Wonderful size kitchen and lounge overlooking the rear garden

## Accommodation

### GROUND FLOOR

Hall

Bedroom 2: 12'3 x 10'8 (3.74m x 3.25m)

Bedroom 1: 11'1 x 11'0 (3.38m x 3.36m)

Shower Room: 5'9 x 5'6 (1.75m x 1.68m)

Kitchen: 17'0 x 10'8 (5.19m x 3.25m)

Lounge/Diner: 17'1 x 10'8 (5.21m x 3.25m)

Conservatory: 10'4 x 6'9 (3.15m x 2.06m)

### OUTSIDE

Front Garden

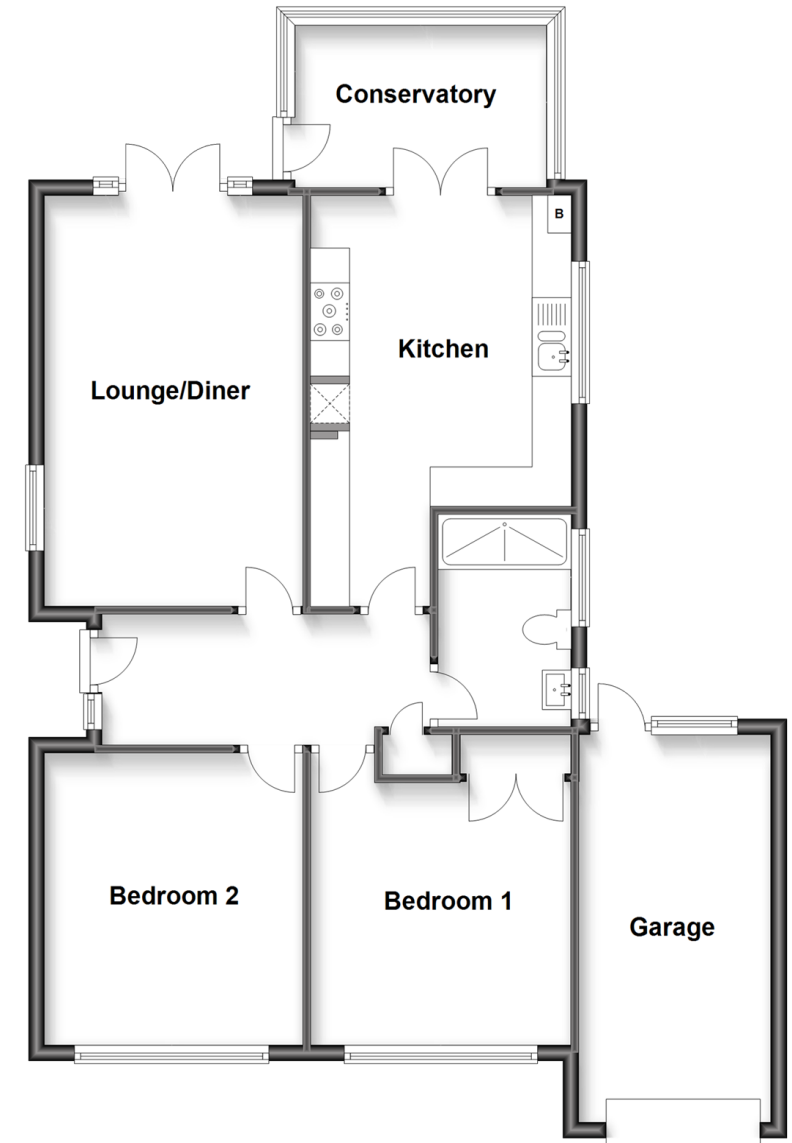
Driveway

Garage

Rear Garden

## Ground Floor

Approx. 90.6 sq. metres (975.4 sq. feet)



**Call Whitstable - 01227 772272 ■ [wardsofken.co.uk](http://wardsofken.co.uk)**

- Legal advice should be taken to verify fixtures/fittings, planning, alterations and/or lease details
- Appliances & services are untested, dimensions are approximate and floor plans are not to scale
- Our Homewise partnership offer a 'Home for Life' plan to buyers over 60, granting a lifetime lease for your protection and reducing the purchase price by up to 59%



12030542/20221107/PG/MR