



Price
£450,000

Freehold

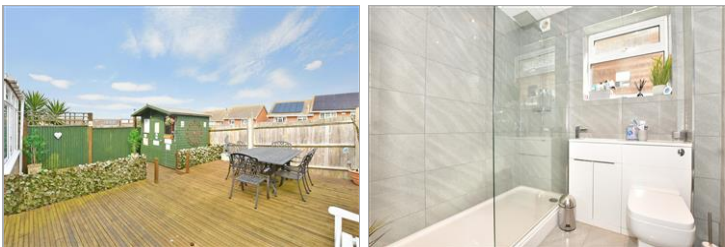
3x  1x  1x 

**Linnet Avenue,
Whitstable, Kent, CT5**

OVER 60?

Secure this property
for up to **59% less!**

Wards
Helping you move forwards



Main features

- Semi-detached split level house with views to the rear
- Wonderful balcony accessed via the lounge and kitchen
- Parking and garage
- Beautiful condition especially the kitchen/diner and shower room
- Very short walk to Seasalter beach

Accommodation

SPLIT LEVEL GROUND FLOOR

Hall
Cloakroom
Bedroom 3: 10'3 x 7'5 (3.13m x 2.26m)
Lounge: 15'0 x 10'7 (4.58m x 3.23m)
Kitchen/Diner: 16'3 x 9'4 (4.96m x 2.85m)
Balcony

LOWER GROUND FLOOR

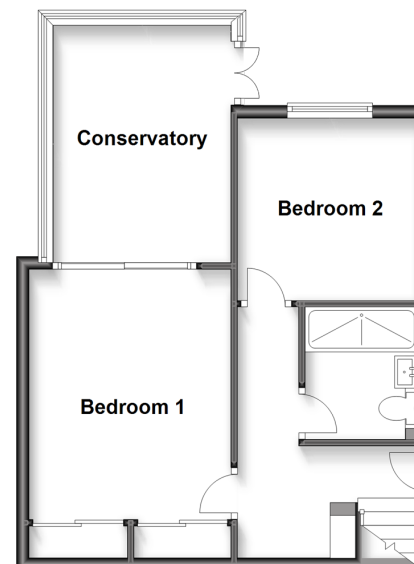
Hall
Bedroom 1: 13'2 x 10'6 (4.02m x 3.20m)
Conservatory: 11'7 x 10'6 (3.53m x 3.20m)
Bedroom 2: 9'6 x 9'3 (2.90m x 2.82m)
Shower Room

OUTSIDE

Front Garden
Garage: 17'1 x 8'8 (5.21m x 2.64m)
Rear Garden

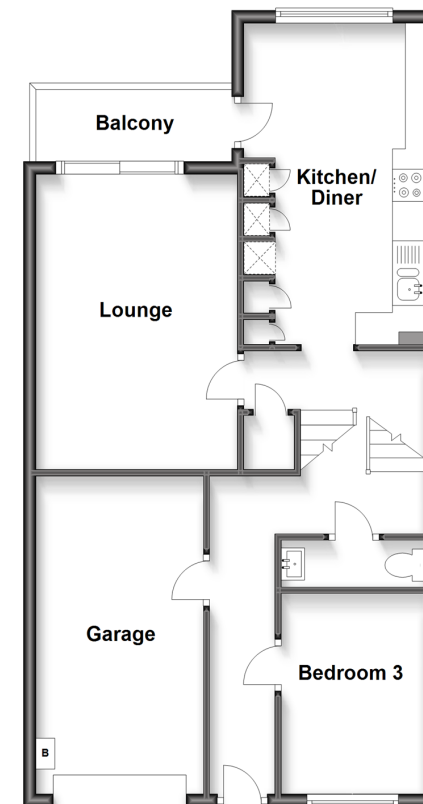
Lower Ground Floor

Approx. 45.3 sq. metres (488.0 sq. feet)



Split Level Ground Floor

Approx. 66.0 sq. metres (710.2 sq. feet)



Call Whitstable - 01227 772272 ■ wardsofkent.co.uk

- Legal advice should be taken to verify fixtures/fittings, planning, alterations and/or lease details
- Appliances & services are untested, dimensions are approximate and floor plans are not to scale
- Through a Homewise Home For Life Plan people aged 60+ can secure this property for up to 59% less, by purchasing a Lifetime Lease.



12032070/20230524/Jp/MR