



OVER 60?

Secure this property
for up to **59% less!**

Price
£525,000

Freehold

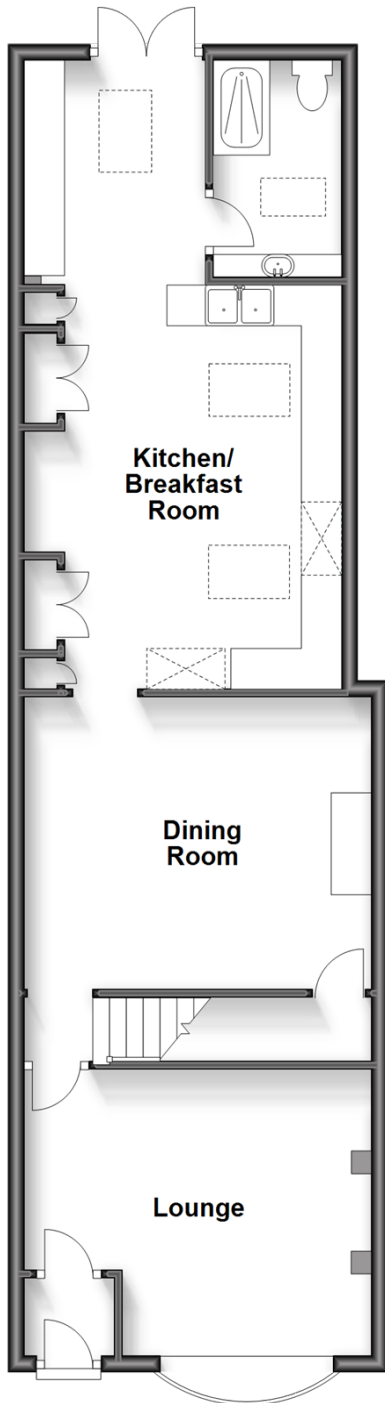
4x  2x  2x 

**Canterbury Road,
Whitstable, Kent, CT5**

Wards
Helping you move forwards

Ground Floor

Approx. 66.0 sq. metres (710.2 sq. feet)



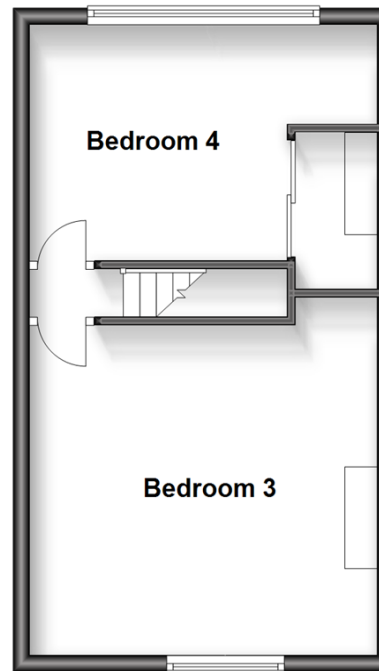
First Floor

Approx. 34.9 sq. metres (375.3 sq. feet)



Second Floor

Approx. 33.3 sq. metres (358.9 sq. feet)



Accommodation

GROUND FLOOR

Lounge: 14'2 x 11'7 (4.32m x 3.53m)

Dining Room: 14'2 x 11'8 (4.32m x 3.56m)

Kitchen: 25'8 x 13'0 (7.83m x 3.97m)

Shower Room

FIRST FLOOR

Landing

Bedroom 1: 14'3 x 11'4 (4.35m x 3.46m)

Bathroom: 6'7 x 6'0 (2.01m x 1.83m)

Bedroom 2: 10'1 x 6'8 (3.08m x 2.03m)

OUTSIDE

Front and Rear Garden

SECOND FLOOR

Bedroom 3: 14'3 x 13'3 (4.35m x 4.04m)

Bedroom 4: 13'0 x 9'6 (3.97m x 2.90m)



Main features

- 3 Storey Period Home
- Short walk into centre of Whitstable
- Eye catching kitchen extension with vaulted ceiling
- Spacious rooms
- Good condition throughout



Nearest Schools

Primary Schools: Whitstable Junior School 0.2 miles, Whitstable and Seasalter Endowed C of E Junior School 0.3 miles, Joy Lane Primary 0.3 miles

Secondary Schools: The Community College Whitstable

Transport Information

Train Stations: Whitstable 0.5 miles, Chestfield & Swalecliffe 1.9 miles, Herne Bay 4.1 miles

Address

Canterbury Road, Whitstable, Kent, CT5

Directions

For directions to this property please contact us.





Call Whitstable Branch 01227 772272 ■ wardsofkent.co.uk



- Legal advice should be taken to verify fixtures/fittings, planning, alterations and/or lease details
- Appliances & services are untested, dimensions are approximate and floor plans are not to scale
- Through a Homewise Home For Life Plan people aged 60+ can secure this property for up to 59% less, by purchasing a Lifetime Lease.



12032756/20230705/MR/MR