



Price
£895,000

Freehold

8x  4x  3x 

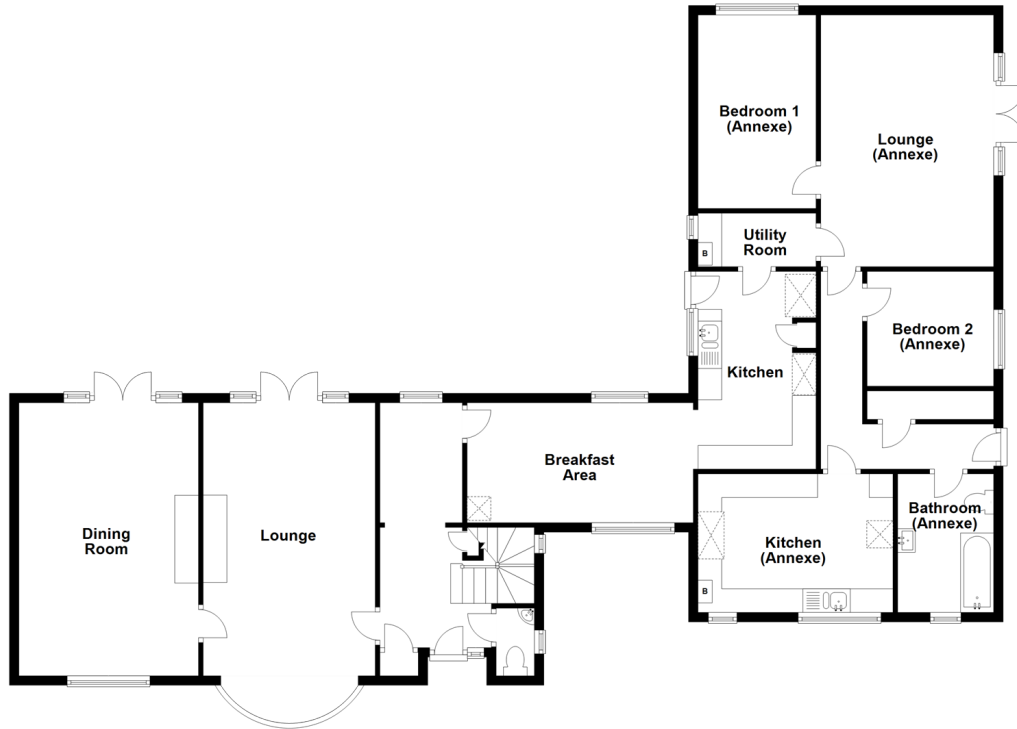
**Longtye Drive,
Chestfield, Whitstable,
Kent, CT5**

OVER 60?

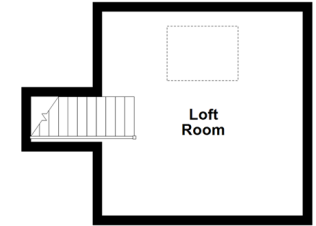
Secure this property
for up to **59% less!**

Wards
Helping you move forwards

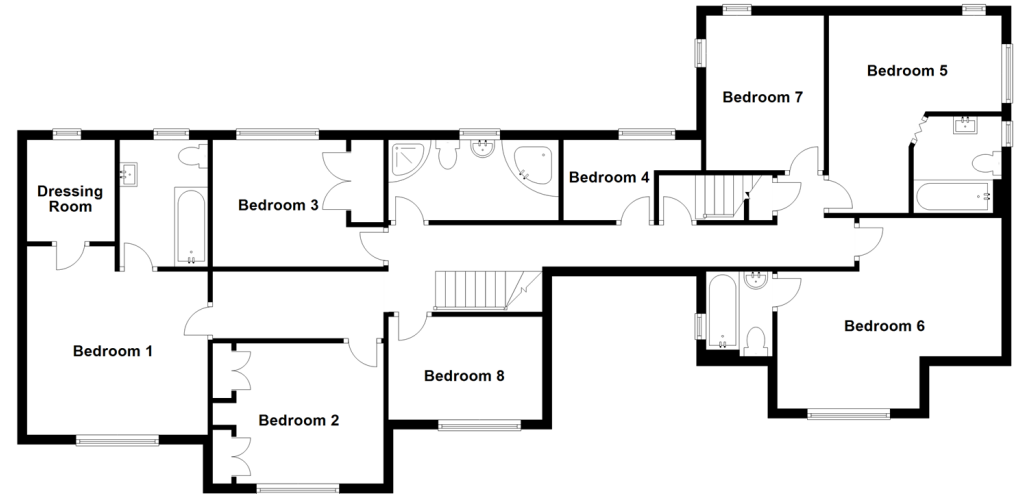
Ground Floor
Approx. 150.0 sq. metres (1614.4 sq. feet)



Second Floor
Approx. 19.6 sq. metres (211.5 sq. feet)



First Floor
Approx. 128.1 sq. metres (1378.6 sq. feet)



Accommodation

GROUND FLOOR

Cloakroom
Lounge: 20'1 x 11'9 (6.13m x 3.58m)
Dining room: 20'1 x 12'4 (6.13m x 3.76m)
Breakfast Area: 15'9 x 8'3 (4.80m x 2.52m)
Kitchen: 13'1 x 8'8 (3.99m x 2.64m)
Utility Room

FIRST FLOOR

Landing
Bedroom 1: 13'1 x 12'3 (3.99m x 3.74m)
Dressing Room
En-Suite Bathroom
Bedroom 2: 11'5 x 9'8 (3.48m x 2.95m)
Bedroom 3: 11'8 x 8'9 (3.56m x 2.67m)
Bedroom 4: 6'2 x 5'5 (1.88m x 1.65m)
Bedroom 5: 15'5 x 9'6 (4.70m x 2.90m)
En-Suite Bathroom: 6'2 x 5'2 (1.88m x 1.58m)
Bedroom 6: 14'0 x 11'9 (4.27m x 3.58m)
En-Suite Bathroom
Hall
Bedroom 7: 10'8 x 8'9 (3.25m x 2.67m)

Bathroom: 11'8 x 5'5 (3.56m x 1.65m)
Bedroom 8: 10'8 x 7'8 (3.25m x 2.34m)

SECOND FLOOR

Loft Room: 13'9 x 12'8 (4.19m x 3.86m)

OUTSIDE

Front Garden
Off Street Parking
Side Garden
Rear Garden
2 Sheds

ANNEXE

Kitchen: 14'1 x 9'7 (4.30m x 2.92m)
Bathroom: 9'6 x 6'7 (2.90m x 2.01m)
Bedroom 1: 13'5 x 8'3 (4.09m x 2.52m)
Lounge: 17'6 x 12'0 (5.34m x 3.66m)



Main features

- Detached character house with additional 2 bedroom annexe
- Annexe has potential to raise circa £19,000 per annum via Air BNB
- Separate parking for both the main residence and annexe
- Situated close to Chestfield Golf Club
- A short drive to Chestfield station



Nearest Schools

Primary Schools: Swalecliffe Community Primary 0.9 miles, St Mary's Catholic Primary 1.3 miles, Whitstable Junior School 1.7 miles
Secondary Schools: The Whitstable School, Whitstable 1.0 miles, Herne Bay High School 2.4 miles, The



Transport Information

Train Stations: Chestfield & Swalecliffe 0.9 miles, Whitstable 1.3 miles, Herne Bay 2.6 miles



Address

Longtye Drive, Chestfield, Whitstable, Kent, CT5



Directions

For directions to this property please contact us.



Call Whitstable Branch 01227 772272 ■ wardsofkent.co.uk



- Legal advice should be taken to verify fixtures/fittings, planning, alterations and/or lease details
- Appliances & services are untested, dimensions are approximate and floor plans are not to scale
- Through a Homewise Home For Life Plan people aged 60+ can secure this property for up to 59% less, by purchasing a Lifetime Lease.



12032778/20230707/JP/MR