



**Price**  
**£400,000**

**Freehold**

2x  1x  2x 

**Middle Wall, Whitstable,  
Kent, CT5**

**OVER 60?**

Secure this property  
for up to **59% less!**

*Wards*  
Helping you move forwards





## Main features

- **Idyllic mariners cottage located in the heart of Whitstable**
- **Chain-free**
- **Perfect holiday home or rental opportunity**
- **Neutrally presented and in good decorative order throughout**
- **Driveway parking to the front and a rear courtyard garden**

## Accommodation

### GROUND FLOOR

Lounge: 14'0 x 10'2 (4.27m x 3.10m)  
Dining Area: 11'8 x 10'2 (3.56m x 3.10m)  
Kitchen : 10'5 x 5'10 (3.18m x 1.78m)

### FIRST FLOOR

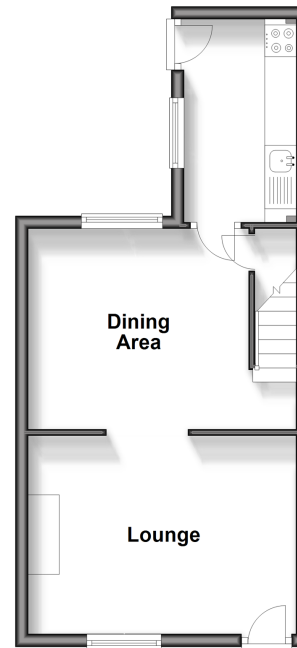
Landing  
Bedroom 1 : 12'0 x 10'6 (3.66m x 3.20m)  
Bedroom 2: 10'4 x 8'9 (3.15m x 2.67m)  
Bathroom

### SECOND FLOOR

Loft Space  
Eves

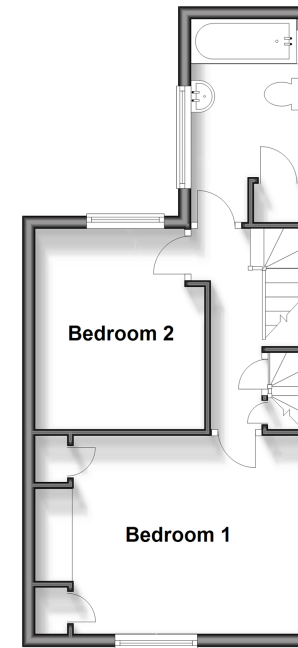
### Ground Floor

Approx. 33.2 sq. metres (357.4 sq. feet)



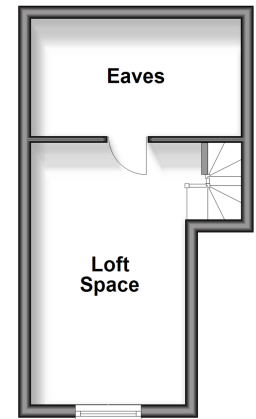
### First Floor

Approx. 33.2 sq. metres (357.4 sq. feet)



### Second Floor

Approx. 17.8 sq. metres (191.6 sq. feet)



**Call Whitstable - 01227 772272 ■ [wardsofKent.co.uk](http://wardsofKent.co.uk)**

- Legal advice should be taken to verify fixtures/fittings, planning, alterations and/or lease details
- Through a Homewise Home For Life Plan people aged 60+ can secure this property for up to 59% less, by purchasing a Lifetime Lease.

- Appliances & services are untested, dimensions are approximate and floor plans are not to scale



12032852/20240423/AR/NF