



Price
£535,000

Freehold

4x  1x  2x 

**Cherry Orchard,
Chestfield, Whitstable,
Kent, CT5**

OVER 60?

Secure this property
for up to **59% less!**

Wards
Helping you move forwards



Main features

- Detached family home with double bedrooms and large rear garden
- Garage converted to another usable room, bedroom, office or playroom
- More than ample parking
- No chain!
- Seller has been quoted between £29,000 & £36,000 via Air BNB income

Accommodation

GROUND FLOOR

Hall

Study/Bedroom 4: 16'0 x 8'0 (4.88m x 2.44m)

Lounge: 20'9 x 11'0 (6.33m x 3.36m)

Cloakroom

Kitchen: 15'8 x 7'4 (4.78m x 2.24m)

Lean-to: 5'0 x 2'2 (1.53m x 0.66m)

Utility Room: 14'0 x 4'7 (4.27m x 1.40m)

FIRST FLOOR

Landing

Bathroom: 7'6 x 7'1 (2.29m x 2.16m)

Separate Toilet

Bedroom 1: 13'4 x 11'0 (4.07m x 3.36m)

Bedroom 2: 11'1 x 9'2 (3.38m x 2.80m)

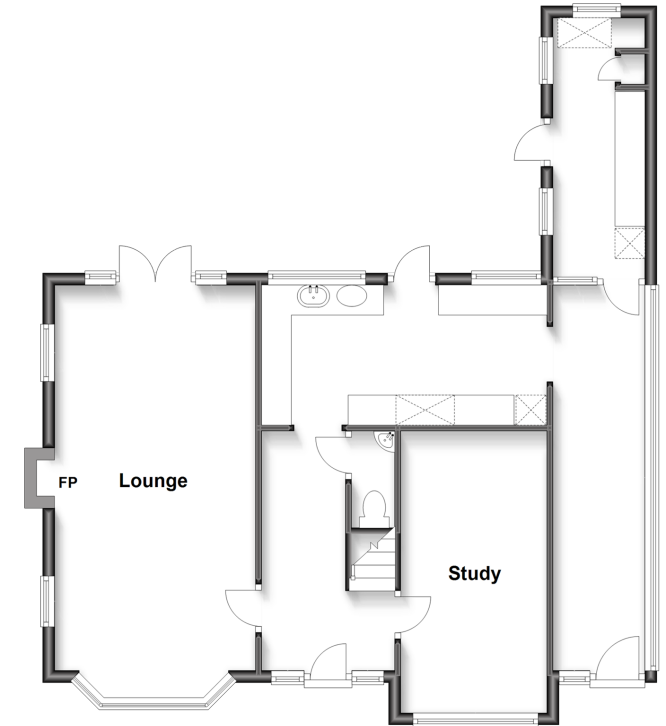
Bedroom 3: 10'3 x 7'4 (3.13m x 2.24m)

OUTSIDE

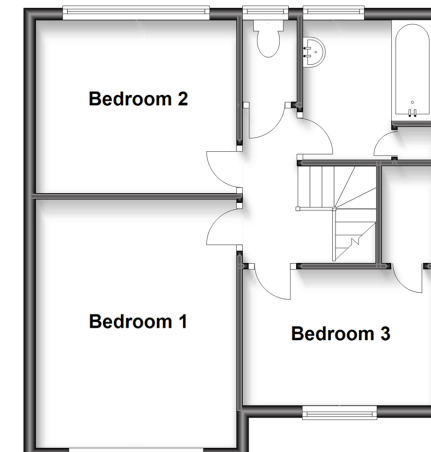
Front Garden

Driveway

Ground Floor
Approx. 72.2 sq. metres (776.9 sq. feet)



First Floor
Approx. 45.3 sq. metres (487.7 sq. feet)



Call Whitstable - 01227 772272 ■ wardsof Kent.co.uk

- Legal advice should be taken to verify fixtures/fittings, planning, alterations and/or lease details
- Appliances & services are untested, dimensions are approximate and floor plans are not to scale
- Through a Homewise Home For Life Plan people aged 60+ can secure this property for up to 59% less, by purchasing a Lifetime Lease.