



**Guide Price**  
**£325,000**

**Freehold**

2x  1x  2x 

**Albert Street,  
Whitstable, Kent, CT5**

**OVER 60?**

Secure this property  
for up to **59% less!**



**Video Tour available**

***Wards***  
Helping you move forwards



## Main features

- End of terrace popular fisherman's style home located in the heart of Whitstable
- For sale by Modern Auction - T & C's apply
- Subject to an undisclosed Reserve Price
- Buyer's fees apply
- No onward chain

## Accommodation

### GROUND FLOOR

Dining Room: 11'5 x 10'9 (3.48m x 3.28m)

Cellar

Lounge: 17'8 x 11'9 (5.39m x 3.58m)

Kitchen: 12'0 x 10'6 (3.66m x 3.20m)

Bathroom: 7'2 x 6'2 (2.19m x 1.88m)

### FIRST FLOOR

Landing

Bedroom 1: 11'3 x 10'8 (3.43m x 3.25m)

Bedroom 2: 9'6 x 7'7 (2.90m x 2.31m)

### SECOND FLOOR

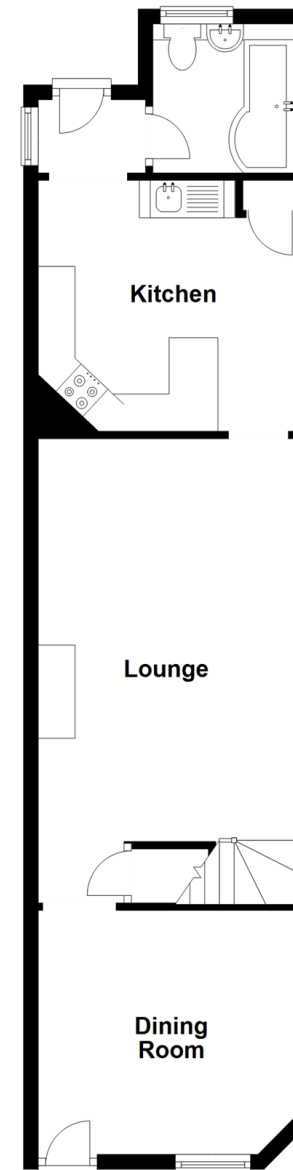
Landing

Loft Room: 11'5 x 10'5 (3.48m x 3.18m)

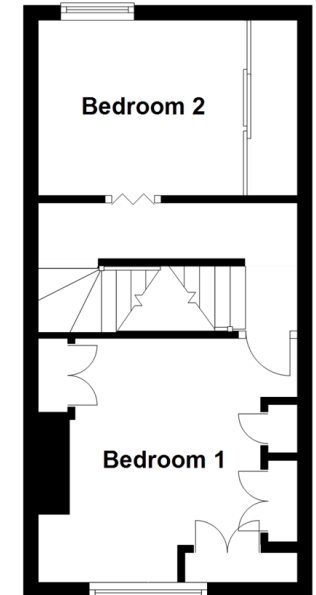
### OUTSIDE

Courtyard Garden

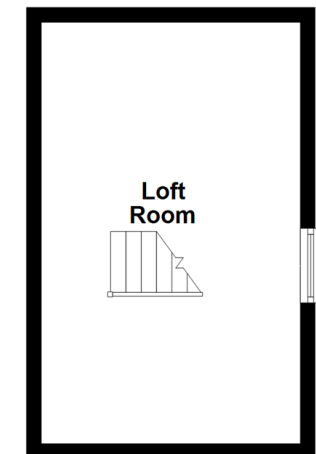
**Ground Floor**  
Approx. 51.7 sq. metres (556.4 sq. feet)



**First Floor**  
Approx. 26.6 sq. metres (285.9 sq. feet)



**Second Floor**  
Approx. 19.9 sq. metres (214.5 sq. feet)



**Call Whitstable - 01227 772272 ■ [wardsof Kent.co.uk](http://wardsof Kent.co.uk)**

- Legal advice should be taken to verify fixtures/fittings, planning, alterations and/or lease details
- Appliances & services are untested, dimensions are approximate and floor plans are not to scale
- Through a Homewise Home For Life Plan people aged 60+ can secure this property for up to 59% less, by purchasing a Lifetime Lease.



12032935/20230804/Jp/MR