



Price
£675,000

Freehold

4x  1x  2x 

**Maydowns Road,
Chestfield, Whitstable,
Kent, CT5**

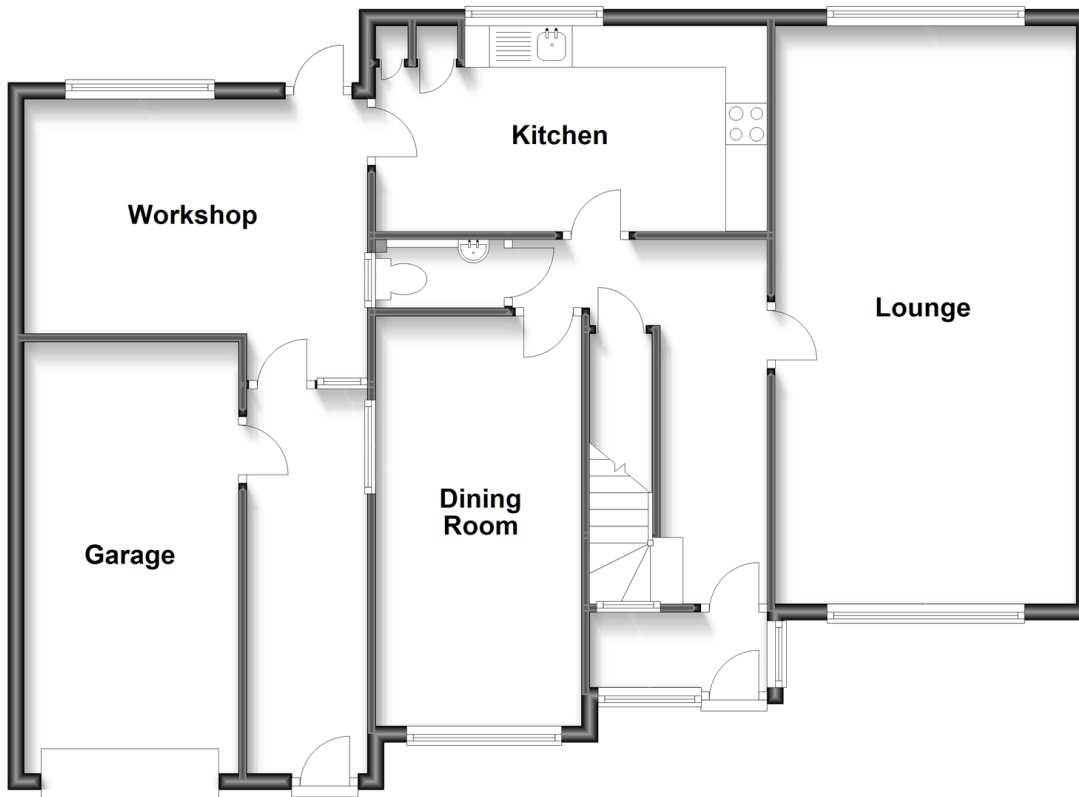
OVER 60?

You could get up to
59% off the price!*

Wards
Helping you move forwards

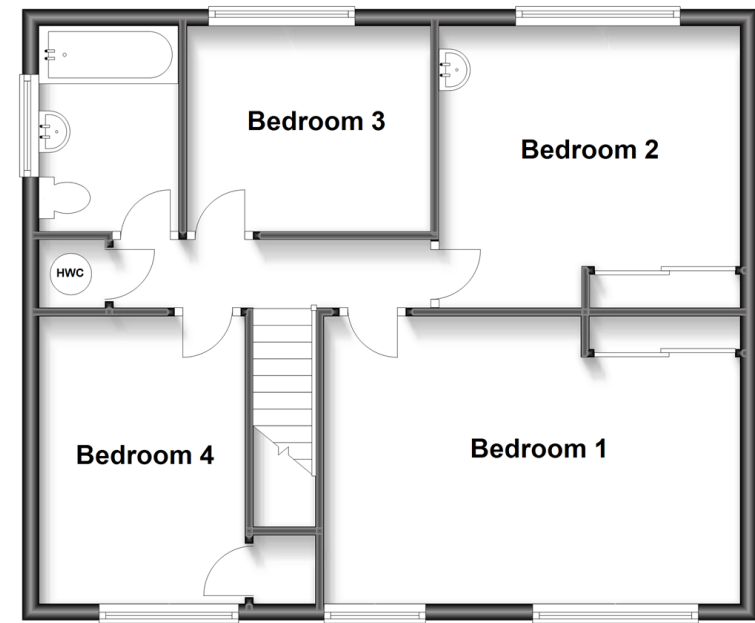
Ground Floor

Approx. 99.5 sq. metres (1071.4 sq. feet)



First Floor

Approx. 59.1 sq. metres (636.2 sq. feet)



Accommodation

GROUND FLOOR

Porch

Entrance Hallway

Lounge: 22'8 x 11'9 (6.91m x 3.58m)

Kitchen: 16'2 x 8'0 (4.93m x 2.44m)

Workshop: 13'6 x 11'8 (4.12m x 3.56m)

Cloakroom

Dining Room: 15'8 x 8'1 (4.78m x 2.47m)

FIRST FLOOR

Landing

Bedroom 1: 15'8 x 11'3 (4.78m x 3.43m)

Bedroom 2: 12'0 x 11'4 (3.66m x 3.46m)

Bedroom 3: 11'1 x 8'3 (3.38m x 2.52m)

Bedroom 4: 9'8 x 8'8 (2.95m x 2.64m)

Bathroom

OUTSIDE

Front Garden

Off Road Parking

Garage

Rear Garden



Main features

- Highly sought after location in Chestfield
- Close to Golf and Cricket clubs
- Lovely house on a generous plot
- Ample parking to the front
- Offering so much potential with the space on offer both internally and externally, subject to the necessary planning permissions



Nearest Schools

Primary Schools: Swalecliffe Community Primary 0.8 miles, Briary Primary 1.0 miles, Hampton Primary 1.3 miles

Secondary Schools: Herne Bay High School 1.5 miles, The Community College Whitstable 1.6 miles, Spires Academy



Transport Information

Train Stations: Chestfield & Swalecliffe 0.4 miles, Whitstable 1.7 miles, Herne Bay 1.8 miles



Address

Maydowns Road, Chestfield, Whitstable, Kent, CT5



Directions

For directions to this property please contact us.



Wards
Helping you move forwards

Call Whitstable Branch 01227 772272 ■ wardsofkent.co.uk



- Legal advice should be taken to verify fixtures/fittings, planning, alterations and/or lease details
- Appliances & services are untested, dimensions are approximate and floor plans are not to scale
- Our Homewise partnership offer a 'Home for Life' plan to buyers over 60, granting a lifetime lease for your protection and reducing the purchase price by up to 59%



12032940/20220902/PG/JP