



Price

£625,000

Freehold

3x  1x  1x 

**Britannia Avenue,
Whitstable, Kent, CT5**

OVER 60?

Secure this property
for up to **59% less!**

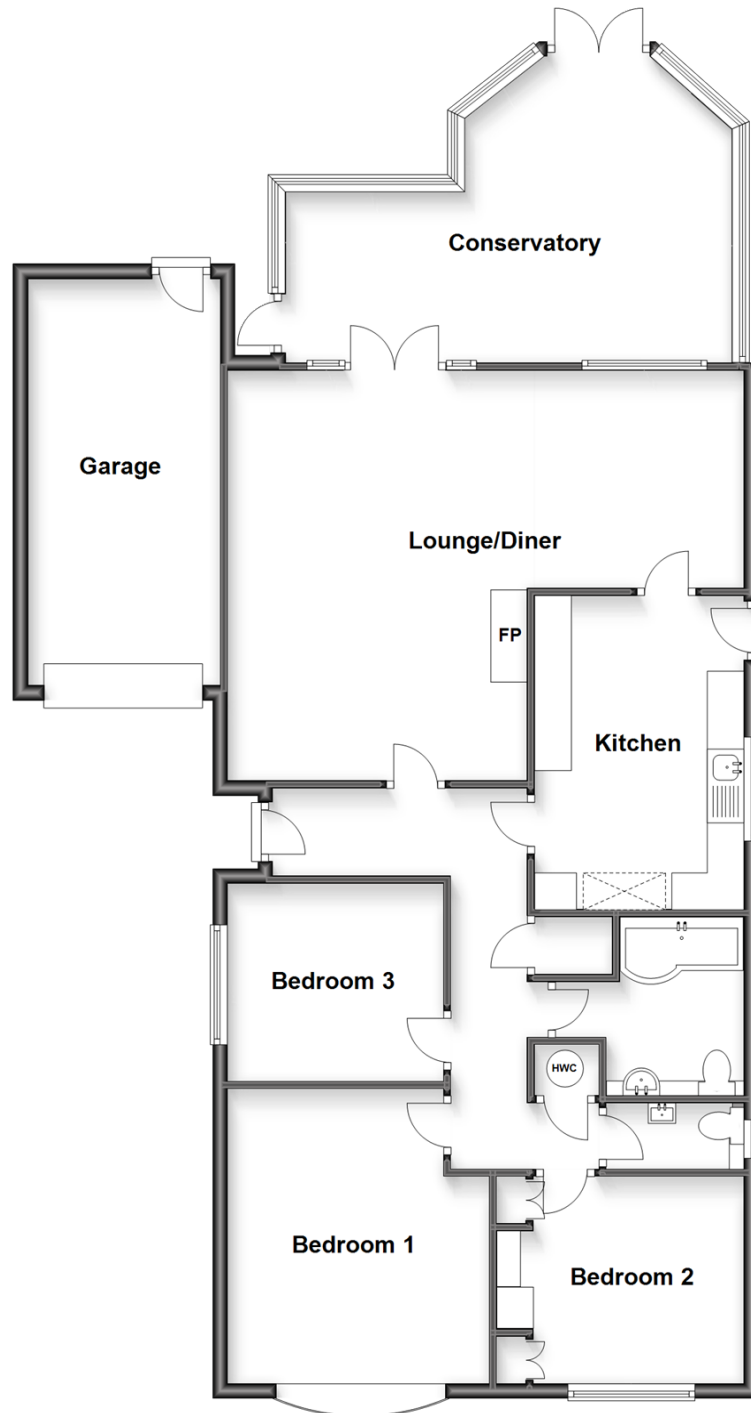


Video Tour available

Wards
Helping you move forwards

Ground Floor

Approx. 131.9 sq. metres (1419.5 sq. feet)



Accommodation

GROUND FLOOR

Hall

Bedroom 1: 13'1 x 11'7 (3.99m x 3.53m)

Bedroom 2: 11'0 x 9'2 (3.36m x 2.80m)

Bedroom 3: 10'3 x 8'8 (3.13m x 2.64m)

Cloakroom: 5'9 x 2'9 (1.75m x 0.84m)

Bathroom: 7'8 x 5'9 (2.34m x 1.75m)

Kitchen: 13'8 x 9'2 (4.17m x 2.80m)

Lounge/Diner: (L-shaped) 23'3 x 9'8 (7.09m x 2.95m) plus 18'2 x 12'7 (5.54m x 3.84m)

Conservatory: 20'0 x 12'0 (6.10m x 3.66m)

OUTSIDE

Front Garden

Drive

Garage

Rear Garden



Main features

- A beautifully presented detached bungalow
- Located in a quiet and peaceful cul-de-sac
- Garage and parking for several cars
- With a short walk to the beach and into town, makes the location ideal
- With a lovely conservatory looking out on the secluded garden



Nearest Schools

Primary Schools: Joy Lane Primary 0.2 miles, Whitstable Junior School 0.7 miles, Whitstable and Seasalter Endowed C of E Junior School 0.9 miles
Secondary Schools: The Whitstable School, Whitstable 1.1 miles, Kent College (Canterbury) 4.1 miles, Kent



Transport Information

Train Stations: Whitstable 1.1 miles, Chestfield & Swalecliffe 2.5 miles, Herne Bay 4.7 miles



Address

Britannia Avenue, Whitstable, Kent, CT5



Directions

For directions to this property please contact us.



Wards
Helping you move forwards

Call Whitstable Branch 01227 772272 ■ wardsofkent.co.uk



- Legal advice should be taken to verify fixtures/fittings, planning, alterations and/or lease details
- Appliances & services are untested, dimensions are approximate and floor plans are not to scale
- Through a Homewise Home For Life Plan people aged 60+ can secure this property for up to 59% less, by purchasing a Lifetime Lease.



12032953/20230105/MR/MR