



Price
£220,000
Leasehold

1x  1x  1x 

High Street, Whitstable, Kent, CT5 1BD

Wards
Helping you move forwards



Main features

- Chain-free!
- A large first floor flat located in the heart of Whitstable High Street
- Separate room used for storage
- This beautiful apartment has high ceilings and a large, open-plan living area
- This property would be ideal for an Airbnb or rental

Accommodation

FIRST FLOOR

Entrance Hallway

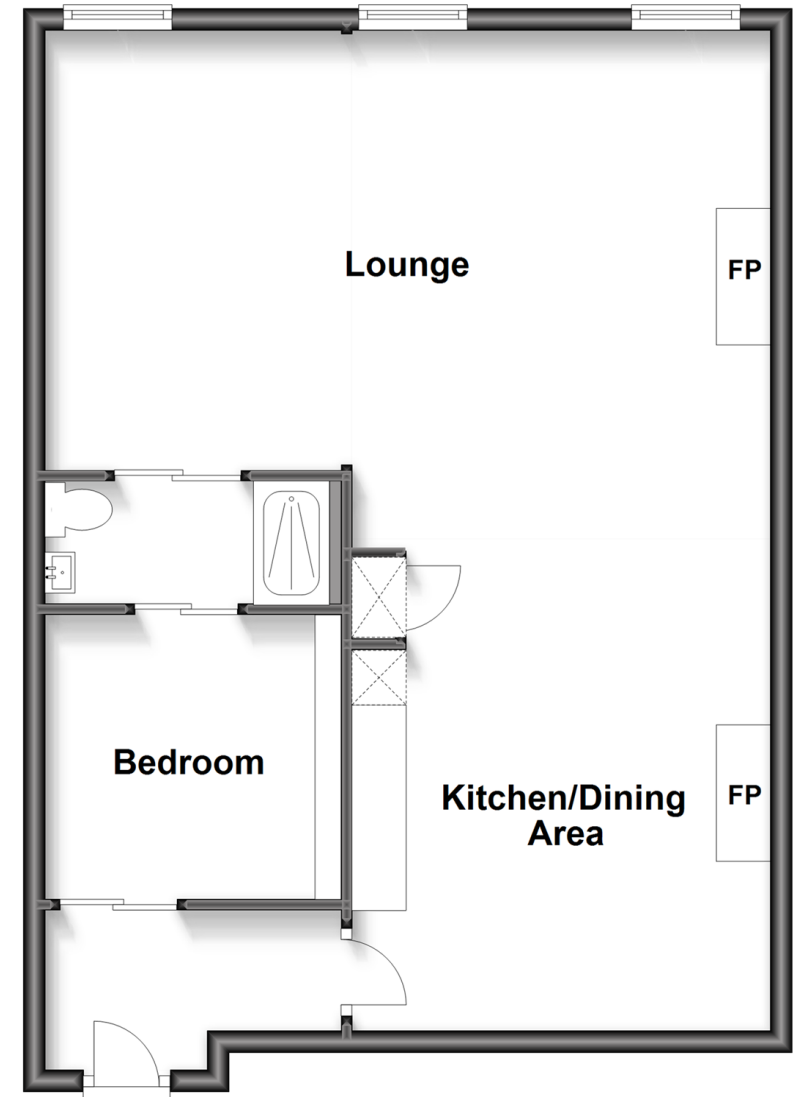
Kitchen/Dining Area/Lounge:
(L-shaped) 30'6 x 21'9 (9.30m x 6.63m) plus 12'4 x 13'1 (3.76m x 3.99m)

Bedroom: 8'4 x 8'2 (2.54m x 2.49m)

Shower Room

First Floor

Approx. 61.8 sq. metres (665.3 sq. feet)



Call Whitstable - 01227 772272 ■ wardsofkent.co.uk

- Legal advice should be taken to verify fixtures/fittings, planning, alterations and/or lease details
- Appliances & services are untested, dimensions are approximate and floor plans are not to scale



12032964/20240417/AR/NF