



Price
£415,000

Freehold

4x  1x  2x 

**Victoria Street,
Whitstable, Kent, CT5**

OVER 60?

Secure this property
for up to **59% less!**

Wards
Helping you move forwards



Main features

- 3 storey terrace home
- Very short walk to Whitstable's vibrant Harbour and High Street
- The town boasts an array of eclectic restaurants, bars and shops
- No chain!
- In need of modernisation
- Good sized rear garden

Accommodation

SPLIT LEVEL GROUND FLOOR

Hall

Lounge: 11'7 x 10'8 (3.53m x 3.25m)

Dining Room: 10'9 x 10'6 (3.28m x 3.20m)

Kitchen: 14'0 x 6'7 (4.27m x 2.01m)

Bathroom

FIRST FLOOR

Landing

Bedroom 1: 13'2 x 10'9 (4.02m x 3.28m)

Bedroom 2: 12'11 x 9'2 (3.94m x 2.80m)

SECOND FLOOR

Landing

Bedroom 3: 13'6 x 11'2 (4.12m x 3.41m)

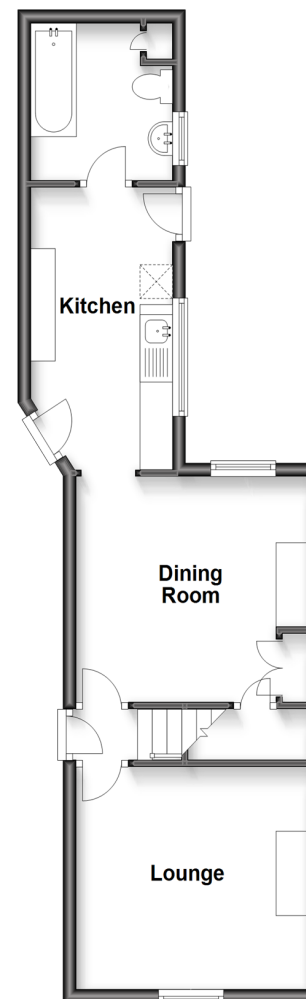
Bedroom 4: 13'7 x 11'5 (4.14m x 3.48m)

OUTSIDE

Rear Garden

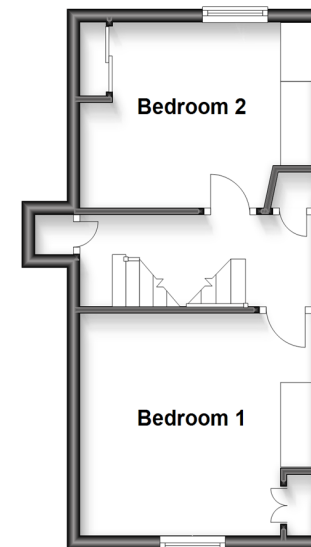
Split Level Ground Floor

Approx. 41.3 sq. metres (445.0 sq. feet)



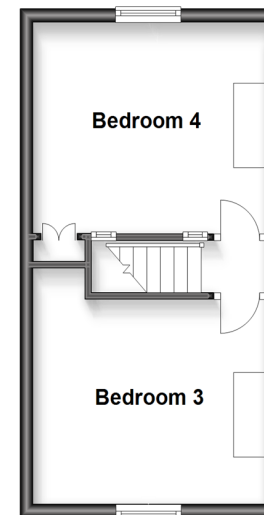
First Floor

Approx. 27.6 sq. metres (296.7 sq. feet)



Second Floor

Approx. 25.5 sq. metres (274.3 sq. feet)



Call Whitstable - 01227 772272 ■ wardsofkent.co.uk

- Legal advice should be taken to verify fixtures/fittings, planning, alterations and/or lease details
- Appliances & services are untested, dimensions are approximate and floor plans are not to scale
- Through a Homewise Home For Life Plan people aged 60+ can secure this property for up to 59% less, by purchasing a Lifetime Lease.



12032965/20230208/PG/MR