



Guide Price
£360,000

Freehold

2x  1x  1x 

**Eden Road, Seasalter,
Whitstable, Kent, CT5**

OVER 60?

Secure this property
for up to **59% less!**

Wards
Helping you move forwards



Main features

- Spacious semi-detached bungalow on this peaceful private road
- Driveway for several cars
- Large conservatory to the rear
- Very easy access to Seasalter beach and local shops
- Bus routes close by
- No chain!

Accommodation

GROUND FLOOR

Hall

Bedroom 2: 9'7 x 8'7 (2.92m x 2.62m)

Bedroom 1: 14'4 x 11'3 (4.37m x 3.43m)

Wet room: 6'2 x 5'5 (1.88m x 1.65m)

Lounge: 15'6 x 11'3 (4.73m x 3.43m)

Kitchen: 10'9 x 8'7 (3.28m x 2.62m)

Conservatory: 20'0 x 9'4 (6.10m x 2.85m)

OUTSIDE

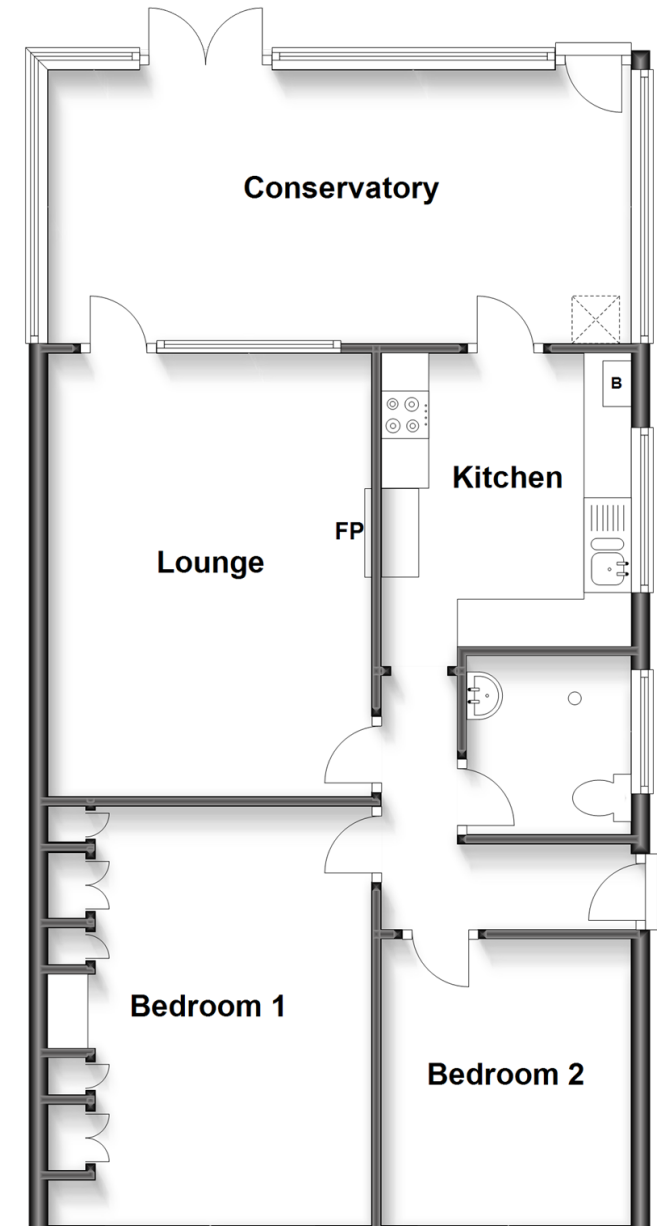
Front Garden

Off Road Parking

Rear Garden

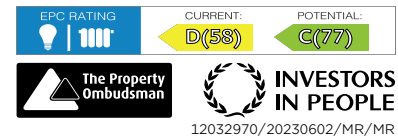
Ground Floor

Approx. 75.2 sq. metres (809.3 sq. feet)



Call Whitstable - 01227 772272 ■ wardsofkent.co.uk

- Legal advice should be taken to verify fixtures/fittings, planning, alterations and/or lease details
- Appliances & services are untested, dimensions are approximate and floor plans are not to scale
- Through a Homewise Home For Life Plan people aged 60+ can secure this property for up to 59% less, by purchasing a Lifetime Lease.



12032970/20230602/MR/MR