



OVER 60?

Secure this property
for up to **59% less!**

Price

£475,000

Freehold

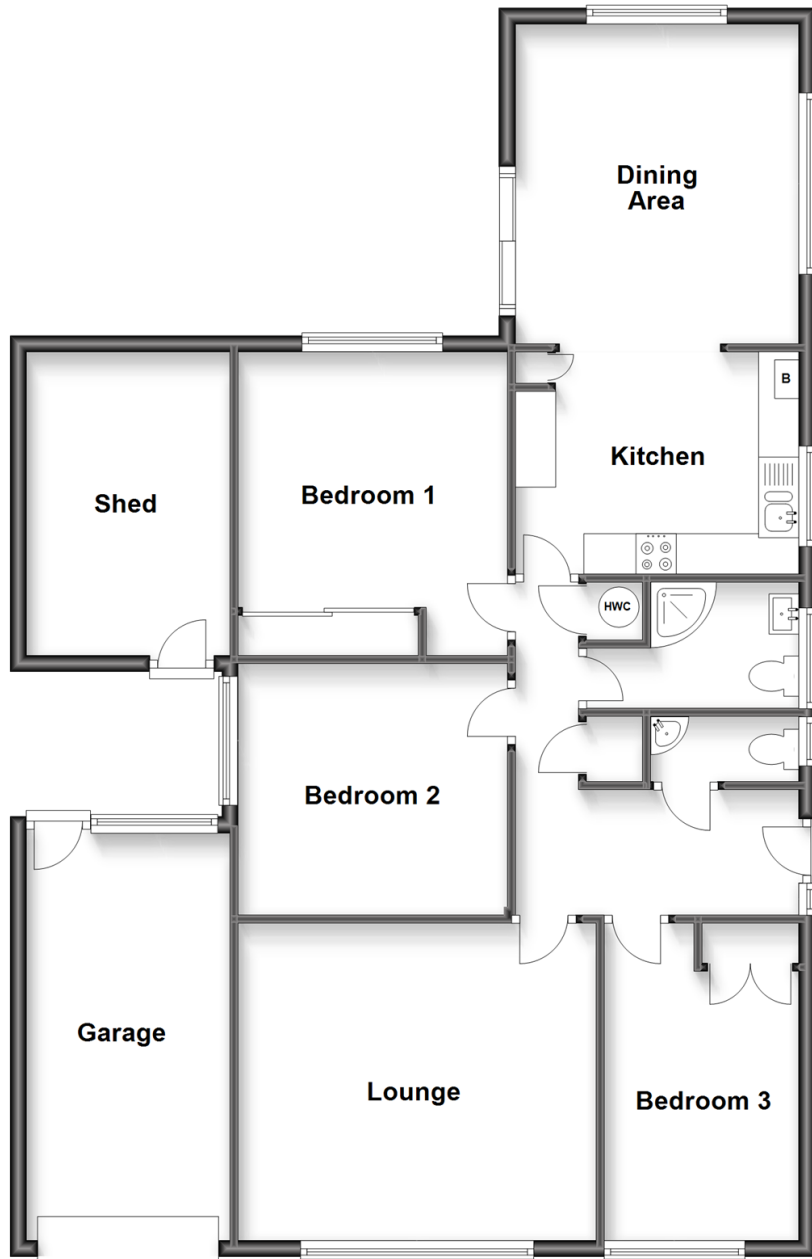
3x  1x  2x 

**Windmill Road,
Whitstable, Kent, CT5**

Wards
Helping you move forwards

Ground Floor

Approx. 115.0 sq. metres (1237.3 sq. feet)



Accommodation

GROUND FLOOR

Hall

Cloakroom

Bedroom 3: 10'8 x 10'0 (3.25m x 3.05m)

Lounge: 14'6 x 12'5 (4.42m x 3.79m)

Bedroom 2: 12'6 x 7'9 (3.81m x 2.36m)

Shower Room

Bedroom 1: 12'5 x 11'0 (3.79m x 3.36m)

Kitchen: 16'8 x 8'8 (5.08m x 2.64m)

Dining Area: 13'1 x 11'5 (3.99m x 3.48m)

OUTSIDE

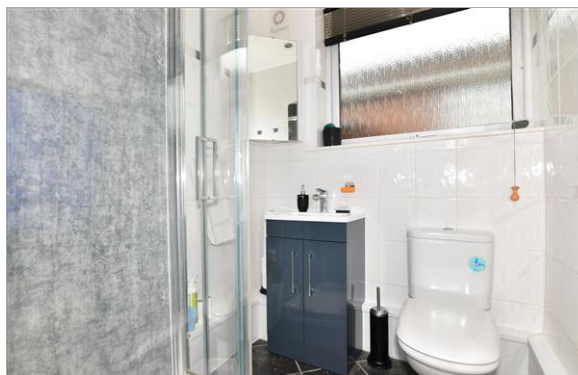
Front Garden

Drive

Garage

Rear Garden

Shed



Main features

- Beautifully presented detached bungalow
- With spacious kitchen and dining area extension to the rear
- Ample parking and garage
- Lovely rear garden
- Sought after road offering a peaceful area to enjoy



Nearest Schools

Primary Schools: Joy Lane Primary 0.2 miles, Whitstable Junior School 0.5 miles, Whitstable and Seasalter Endowed C of E Junior School 0.6 miles
Secondary Schools: The Whitstable School, Whitstable 0.6 miles, Herne Bay High School 3.9 miles



Transport Information

Train Stations: Whitstable 0.8 miles, Chestfield & Swalecliffe 2.0 miles, Herne Bay 4.2 miles



Address

Windmill Road, Whitstable, Kent, CT5



Directions

For directions to this property please contact us.



Wards
Helping you move forwards

Call Whitstable Branch 01227 772272 ■ wardsofkent.co.uk



■ Legal advice should be taken to verify fixtures/fittings, planning, alterations and/or lease details ■ Appliances & services are untested, dimensions are approximate and floor plans are not to scale
■ Through a Homewise Home For Life Plan people aged 60+ can secure this property for up to 59% less, by purchasing a Lifetime Lease.



12033002/20231108/NF/MR