



Price
£600,000

Freehold

3x  1x  1x 

**Valkyrie Avenue,
Whitstable, Kent, CT5**

OVER 60?

Secure this property
for up to **59% less!**

Wards
Helping you move forwards



Main features

- An exemplary detached bungalow with sweeping sea views
- A high-spec Wren kitchen
- Large driveway
- Newly renovated with a dressing room to the primary bedroom
- Open-plan kitchen/diner/lounge area with a large skylight and bi-fold doors

Accommodation

GROUND FLOOR

Hallway

Bedroom 1: 11'5 x 10'4 (3.48m x 3.15m)

Dressing Room : 9'10 x 6'9 (3.00m x 2.06m)

Bedroom 3 : 11'4 x 7'3 (3.46m x 2.21m)

Bedroom 2: 13'0 x 10'4 (3.97m x 3.15m)

Bathroom

Cloakroom

Kitchen/Lounge/Diner: 20'3 x 19'6 (6.18m x 5.95m)

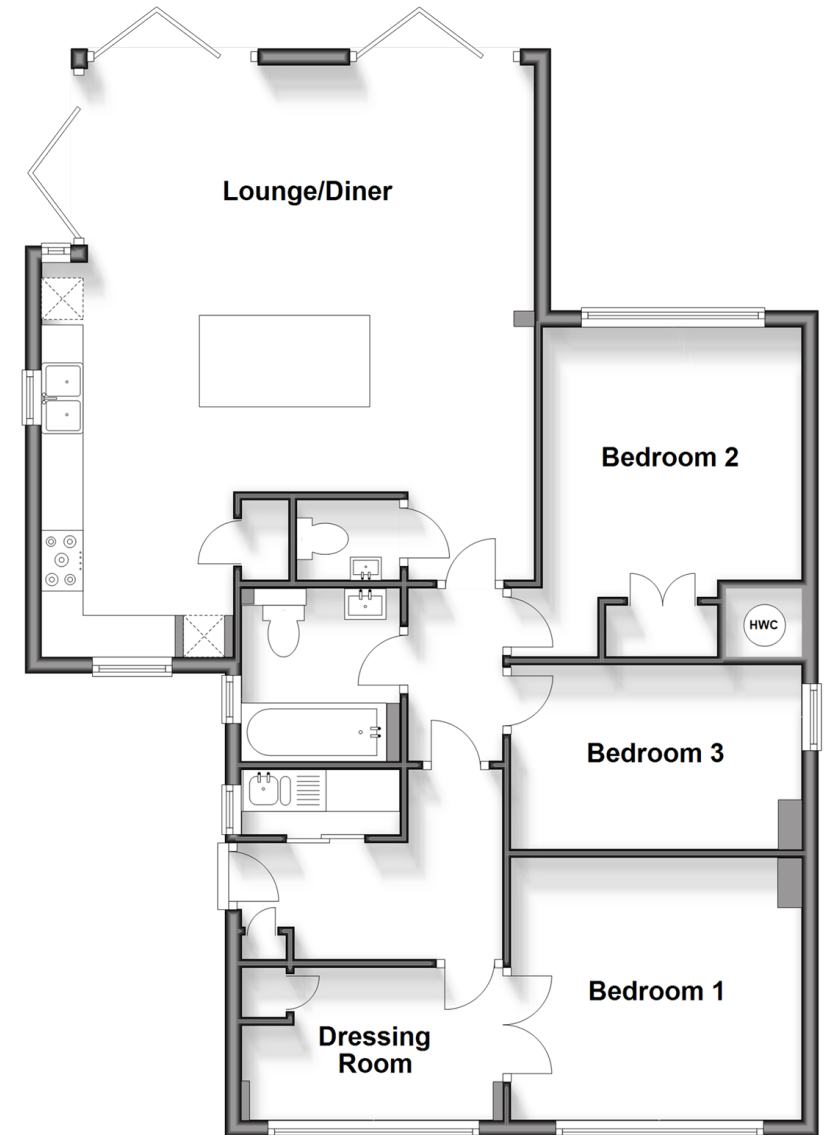
OUTSIDE

Driveway

Rear Garden

Ground Floor

Approx. 91.2 sq. metres (981.2 sq. feet)



Call Whitstable - 01227 772272 ■ wardsofkent.co.uk

- Legal advice should be taken to verify fixtures/fittings, planning, alterations and/or lease details
- Appliances & services are untested, dimensions are approximate and floor plans are not to scale
- Through a Homewise Home For Life Plan people aged 60+ can secure this property for up to 59% less, by purchasing a Lifetime Lease.



12033137/20240507/NF/NF