



OVER 60?

Secure this property
for up to **59% less!**

Price

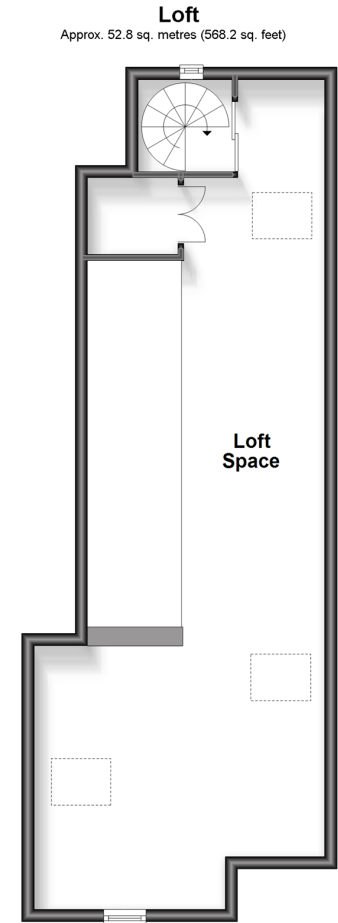
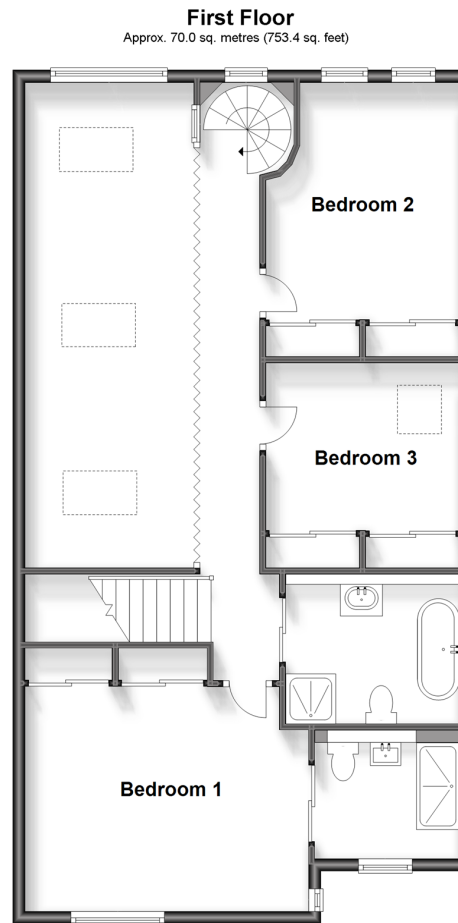
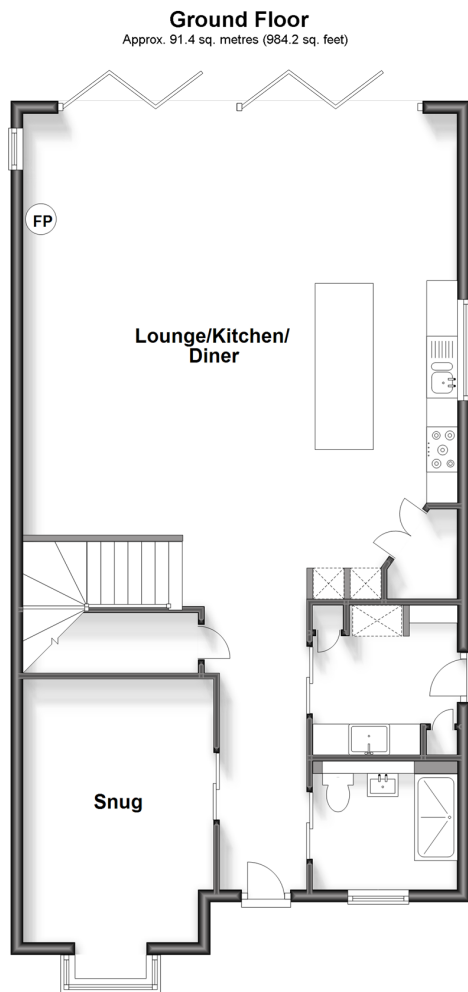
£750,000

Freehold

3x  2x  1x 

**Gordon Road,
Whitstable, Kent, CT5**

Wards
Helping you move forwards



Accommodation

GROUND FLOOR

snug/Bedroom 3: 14'4 x 9'9 (4.37m x 2.97m)
Wet Room: 7'7 x 6'2 (2.31m x 1.88m)
Utility Room: 7'8 x 7'5 (2.34m x 2.26m)
Lounge/Kitchen/Diner: 25'2 x 24'6 (7.68m x 7.47m)
Hall

Bathroom: 9'2 x 7'5 (2.80m x 2.26m)
Loft Room: 45'2 x 12'3 (13.78m x 3.74m)

OUTSIDE

Front Driveway
Rear Garden

FIRST FLOOR

Bedroom 1: 14'9 x 12'0 (4.50m x 3.66m)
En Suite: 7'9 x 6'9 (2.36m x 2.06m)
Bedroom 2: 12'5 x 10'4 (3.79m x 3.15m)
Bedroom 4: 10'4 x 8'9 (3.15m x 2.67m)



Main features

- Stunning self built property
- Unique eye-catching vaulted lounge
- Open plan living
- 45 foot Loft Room
- Finished to a high specification



Nearest Schools

Primary Schools: Joy Lane Primary 0.3 miles, Whitstable Junior School 0.4 miles, Whitstable and Seasalter Endowed C of E Junior School 0.5 miles

Secondary Schools: The Community College Whitstable



Transport Information

Train Stations: Whitstable 0.7 miles, Chestfield & Swalecliffe 1.9 miles, Herne Bay 4.1 miles



Address

Gordon Road, Whitstable, Kent, CT5



Directions

For directions to this property please contact us.



Wards
Helping you move forwards

Call Whitstable Branch 01227 772272 ■ wardsofkent.co.uk



■ Legal advice should be taken to verify fixtures/fittings, planning, alterations and/or lease details ■ Appliances & services are untested, dimensions are approximate and floor plans are not to scale
■ Through a Homewise Home For Life Plan people aged 60+ can secure this property for up to 59% less, by purchasing a Lifetime Lease.



12033149/20230620/MR/MR