



OVER 60?

Secure this property
for up to **59% less!**

Price

£650,000

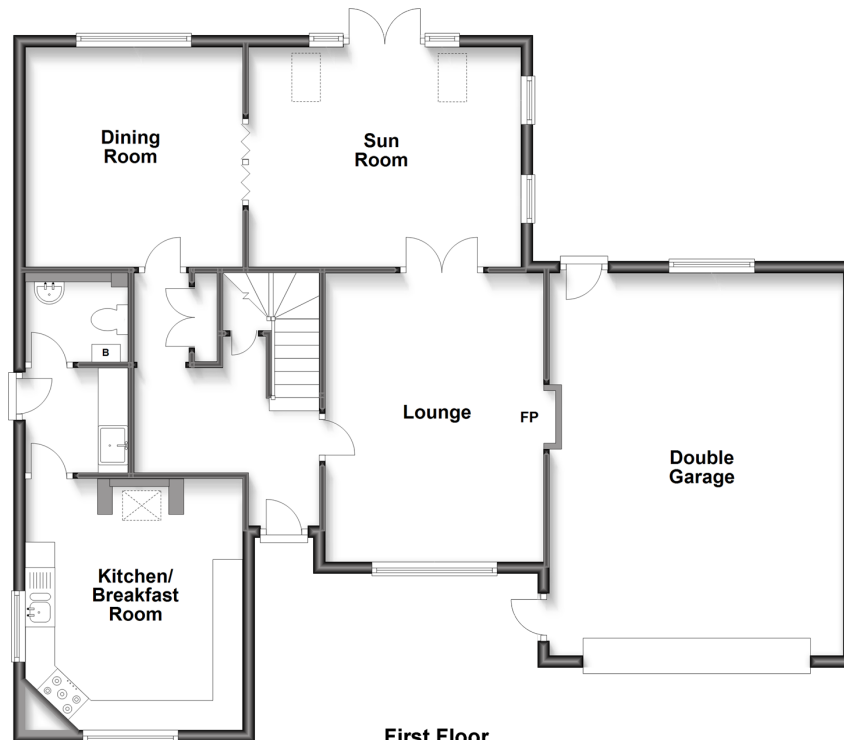
Freehold

4x  2x  3x 

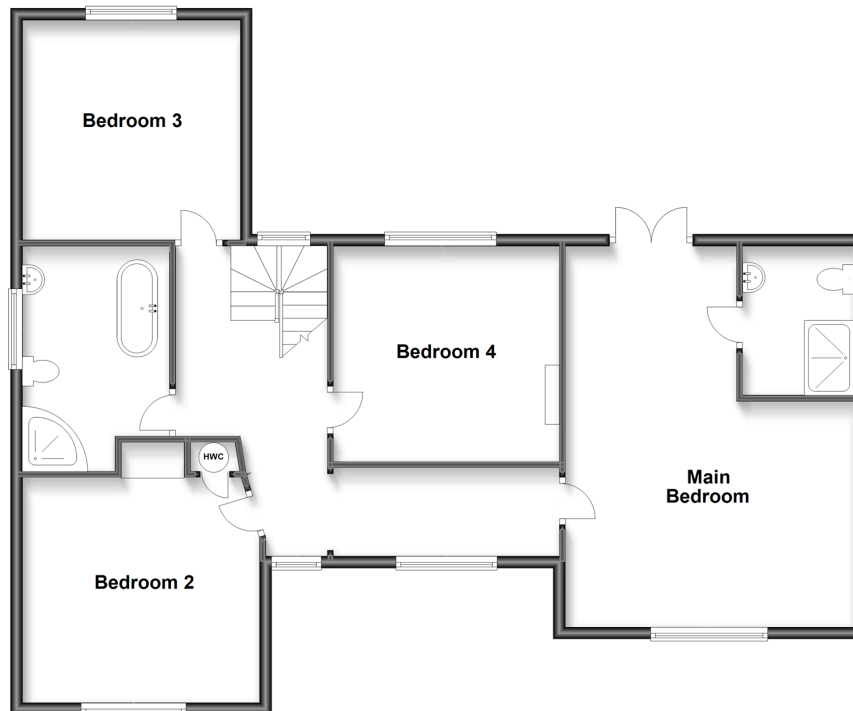
**Clover Rise, Whitstable,
Kent, CT5**

Wards
Helping you move forwards

Split Level Ground Floor
Approx. 116.1 sq. metres (1249.4 sq. feet)



First Floor
Approx. 103.0 sq. metres (1108.8 sq. feet)



Accommodation

SPLIT LEVEL GROUND FLOOR

Hall

Lounge: 16'1 x 12'1 (4.91m x 3.69m)

Kitchen/Breakfast Room: 14'4 x 12'1 (4.37m x 3.69m)

Utility Room: 5'7 x 5'6 (1.70m x 1.68m)

Cloakroom: 5'7 x 4'1 (1.70m x 1.25m)

Dining Room: 12'3 x 12'1 (3.74m x 3.69m)

Sun Room: 15'8 x 12'1 (4.78m x 3.69m)

FIRST FLOOR

Landing

Main Bedroom: 20'9 x 16'1 (6.33m x 4.91m)

En-Suite Shower Room

Juliet Balcony

Bedroom 2: 13'1 x 12'6 (3.99m x 3.81m)

Bedroom 3: 12'4 x 12'1 (3.76m x 3.69m)

Bedroom 4: 12'5 x 12'1 (3.79m x 3.69m)

Bathroom: 12'8 x 8'1 (3.86m x 2.47m)

OUTSIDE

Front Garden

Driveway

Double Garage

Single Garage

Rear Garden



Main features

- Spacious double fronted detached house on a very wide plot
- Double and single garage plus driveway
- Wonderful extension with vaulted ceiling overlooking the rear garden
- Very spacious bedrooms including a Juliet balcony to the main bedroom
- Conveniently located for either access to local shops or Thanet Way for commuters



Nearest Schools

Primary Schools: Swalecliffe Community Primary 0.5 miles, St Mary's Catholic Primary 0.6 miles, Whitstable and Seasalter Endowed C of E Junior School 1.1 miles
Secondary Schools: The Whitstable School, Whitstable 0.6 miles, Herne Bay High School 2.6 miles



Transport Information

Train Stations: Whitstable 0.7 miles, Chestfield & Swalecliffe 0.7 miles, Herne Bay 2.9 miles



Address

Clover Rise, Whitstable, Kent, CT5



Directions

For directions to this property please contact us.



Wards
Helping you move forwards

Call Whitstable Branch 01227 772272 ■ wardsofkent.co.uk



- Legal advice should be taken to verify fixtures/fittings, planning, alterations and/or lease details
- Appliances & services are untested, dimensions are approximate and floor plans are not to scale
- Through a Homewise Home For Life Plan people aged 60+ can secure this property for up to 59% less, by purchasing a Lifetime Lease.



12033162/20240403/AR/KW5