



**OVER 60?**

Secure this property  
for up to **59% less!**

**Price**

**£425,000**

**Leasehold**

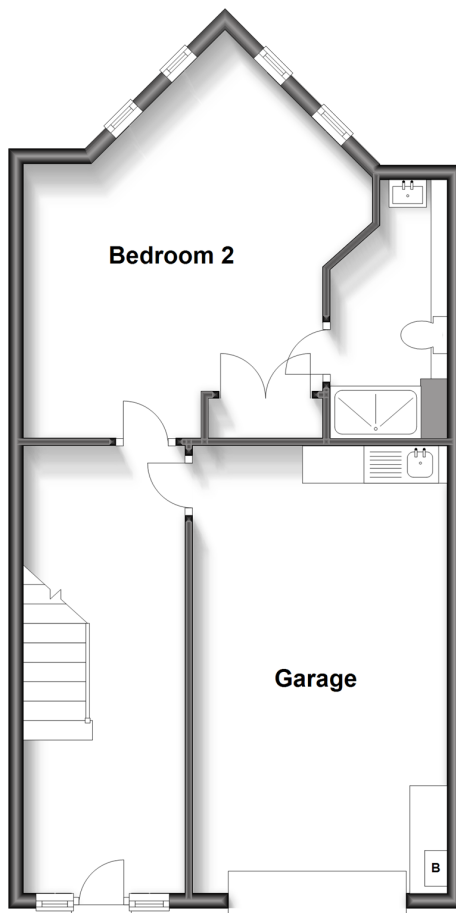
4x  3x  2x 

**Bluefield Mews,  
Whitstable, Kent, CT5**

*Wards*  
Helping you move forwards

## Ground Floor

Approx. 58.3 sq. metres (627.9 sq. feet)



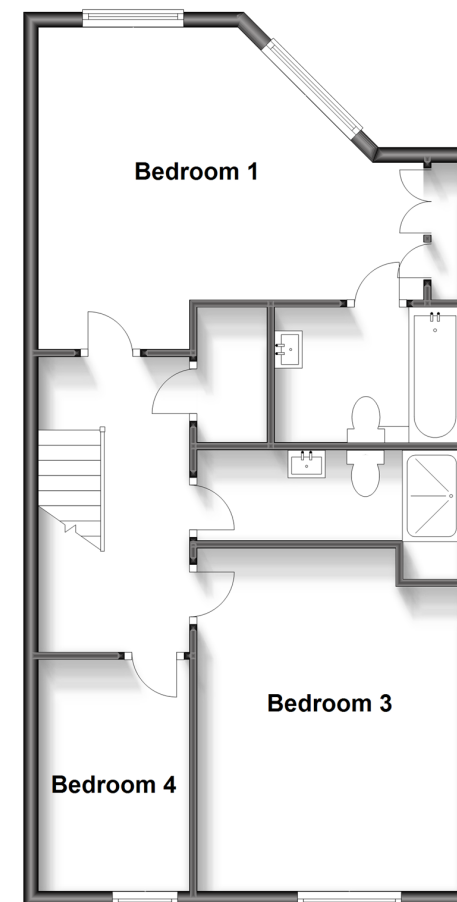
## First Floor

Approx. 61.8 sq. metres (665.7 sq. feet)



## Second Floor

Approx. 61.8 sq. metres (665.7 sq. feet)



## Accommodation

### GROUND FLOOR

Hall  
 Bedroom 1: 17'7 x 13'4 (5.36m x 4.07m)  
 En Suite Shower Room: 9'8 x 5'0 (2.95m x 1.53m)  
 Integral Garage

### FIRST FLOOR

Kitchen Diner: 22'8 x 18'8 (6.91m x 5.69m)  
 Lounge with balcony: 18'8 x 15'3 (5.69m x 4.65m)

### SECOND FLOOR

Bedroom 2: 16'4 x 15'3 (4.98m x 4.65m)

En Suite Bathroom: 8'0 x 5'8 (2.44m x 1.73m)  
 Shower Room: 12'0 x 4'2 (3.66m x 1.27m)  
 Bedroom 3: 14'5 x 11'9 (4.40m x 3.58m)  
 Bedroom 4: 10'6 x 6'5 (3.20m x 1.96m)

### OUTSIDE

Communal Garden  
 Off Street Parking



## Main features

- Spacious 4 bedroom town house
- Boasting double bedrooms with 2 en suites
- Stunning Open Plan Kitchen/Diner
- Garage and driveway
- Quiet cul-de-sac position



### Nearest Schools

Primary Schools: Joy Lane Primary 0.5 miles, Whitstable Junior School 0.9 miles, Whitstable and Seasalter Endowed C of E Junior School 1.1 miles

Secondary Schools: The Community College Whitstable



### Transport Information

Train Stations: Whitstable 1.2 miles, Chestfield & Swalecliffe 2.3 miles, Herne Bay 4.4 miles



### Address

Bluefield Mews, Whitstable, Kent, CT5



### Directions

For directions to this property please contact us.



Call Whitstable Branch 01227 772272 ■ [wardsofkent.co.uk](http://wardsofkent.co.uk)



- Legal advice should be taken to verify fixtures/fittings, planning, alterations and/or lease details
- Appliances & services are untested, dimensions are approximate and floor plans are not to scale
- Through a Homewise Home For Life Plan people aged 60+ can secure this property for up to 59% less, by purchasing a Lifetime Lease.



12033187/20230530/MR/MR