



Price

£640,000

Freehold

4x  2x  2x 

**Plot 95, Nassella
Gardens, Grasmere
Gardens (Phase 1),
Chestfield, Whitstable,**

Wards
Helping you move forwards



Main features

- Bespoke design fully fitted kitchen with Bosch integrated appliances
- Fitted wardrobes to main bedroom
- Contemporary bathroom suites with heated towel rails
- Smart heating controls to monitor your energy usage
- 10-year NHBC warranty for peace of mind

Accommodation

GROUND FLOOR

Hall
Cloakroom
Kitchen: 11'8 x 8'7 (3.56m x 2.62m)
Lounge/Dining: 20'6 x 17'5 (6.25m x 5.31m)

FIRST FLOOR

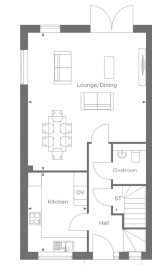
Bedroom 3: 13'7 x 8'5 (4.14m x 2.57m)
Bedroom 4: 11'0 x 9'8 (3.36m x 2.95m)
Bedroom 5/Study: 13'7 x 8'6 (4.14m x 2.59m)
Bathroom

SECOND FLOOR

Bedroom 1: 17'5 x 12'3 (5.31m x 3.74m)
En Suite Bathroom
Bedroom 2: 13'9 x 13'1 (4.19m x 3.99m)

OUTSIDE

Rear Garden
Car Port



THE LAUREL
Ground Floor
House Total Area - 160.7sq.m / 1730sq.ft



THE LAUREL
First Floor
House Total Area - 160.7sq.m / 1730sq.ft



THE LAUREL
Second Floor
House Total Area - 160.7sq.m / 1730sq.ft

Call Whitstable - 01227 772272 ■ wardsofkent.co.uk

- If buying to let, the energy rating will need to be improved to at least 'E' rating before you can let the property
- Legal advice should be taken to verify fixtures/fittings, planning, alterations and/or lease details
- Appliances & services are untested, dimensions are approximate and floor plans are not to scale



12033229/20230623/JP/MR