



**Price**  
**£395,000**

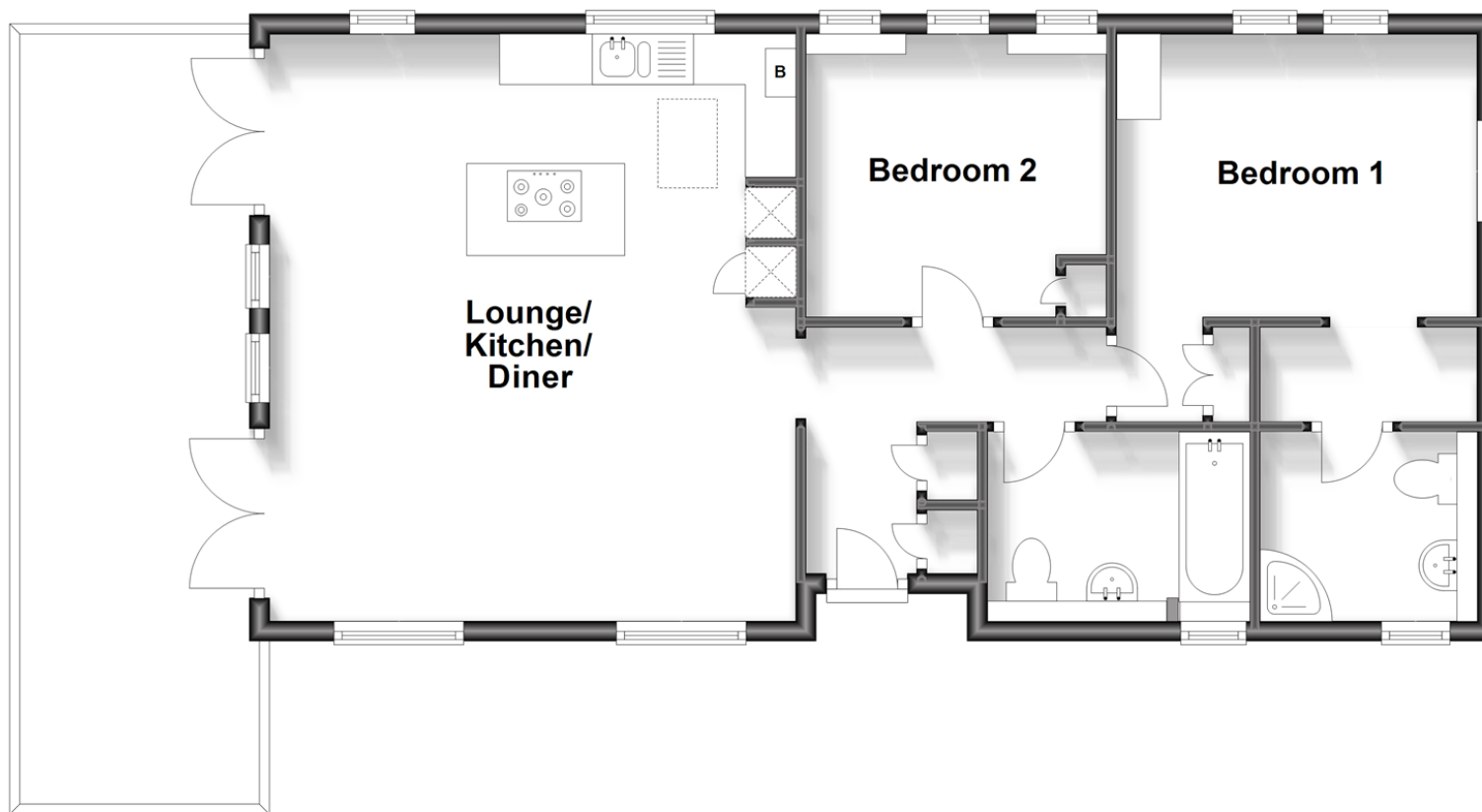
2x  2x  1x 

**Beach Court Park,  
Faversham Road,  
Seasalter, Whitstable,  
Kent, CT5**

*Wards*  
Helping you move forwards

## Ground Floor

Approx. 68.3 sq. metres (735.0 sq. feet)



## Accommodation

### GROUND FLOOR

Hallway

Lounge/Kitchen/Diner: 19'1 x 16'9 (5.82m x 5.11m)

Bedroom 2: 9'6 x 9'5 (2.90m x 2.87m)

Bathroom: 8'5 x 6'5 (2.57m x 1.96m)

Bedroom 1: 12'6 x 11'7 (3.81m x 3.53m)

Ensuite Shower Room

### OUTSIDE

Sun deck : 6'7 x 6'2 (2.01m x 1.88m)

Front Garden

Rear Garden

Side Garden





## Main features

- Detached park home with uninterrupted views
- Large sun deck
- All year round residency (over 50s only)
- Beautifully presented with open plan layout
- Dressing area and ensuite to main bedroom
- Driveway



### Nearest Schools



### Transport Information

Train Stations: Whitstable 2.1 miles, Chestfield & Swalecliffe 3.4 miles, Faversham 4.8 miles



### Address

Beach Court Park, Faversham Road, Seasalter, Whitstable, Kent, CT5



### Directions

For directions to this property please contact us.





Call Whitstable Branch 01227 772272 ■ [wardsofkent.co.uk](https://wardsofkent.co.uk)



- If buying to let, the energy rating will need to be improved to at least 'E' rating before you can let the property
- Appliances & services are untested, dimensions are approximate and floor plans are not to scale

- Legal advice should be taken to verify fixtures/fittings, planning, alterations and/or lease details

12033262/20230901/JP/MR