



OVER 60?

Secure this property
for up to **59% less!**

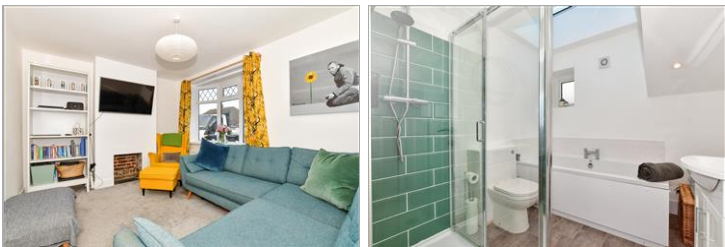
Price
£425,000

Freehold

2x  1x  2x 

**Reservoir Road,
Whitstable, Kent, CT5**

Wards
Helping you move forwards



Main features

- Chain-free
- Driveway parking (subject to dropped kerb)
- Beautifully extended to the rear
- Completely renovated with a full re-wire, re-plastered, and a brand-new kitchen and bathroom suite fitted from 2021-2023

Accommodation

GROUND FLOOR

Porch

Lounge: 12'11 x 10'4 (3.94m x 3.15m)

Kitchen: 12'9 x 9'10 (3.89m x 3.00m)

Utility Area: 7'9 x 4'10 (2.36m x 1.47m)

Dining Area: 14'4 x 7'3 (4.37m x 2.21m)

Bathroom

FIRST FLOOR

Bedroom 1: 12'11 x 10'5 (3.94m x 3.18m)

Bedroom 2: 12'11 x 10'0 (3.94m x 3.05m)

Cloak Cupboard

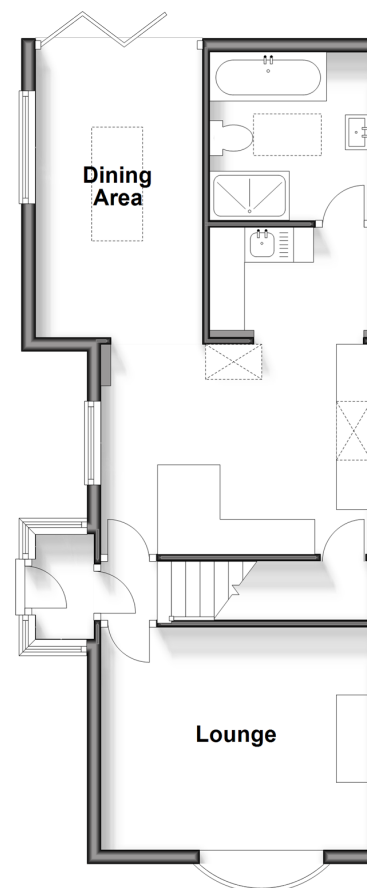
OUTSIDE

Front Garden

Rear Garden

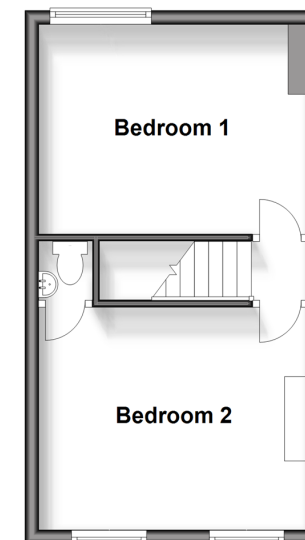
Split Level Ground Floor

Approx. 49.1 sq. metres (528.0 sq. feet)



First Floor

Approx. 28.1 sq. metres (302.4 sq. feet)



Call Whitstable - 01227 772272 ■ wardsofkent.co.uk

- Legal advice should be taken to verify fixtures/fittings, planning, alterations and/or lease details
- Appliances & services are untested, dimensions are approximate and floor plans are not to scale
- Through a Homewise Home For Life Plan people aged 60+ can secure this property for up to 59% less, by purchasing a Lifetime Lease.



12033297/20240123/NF/NF