



Guide Price
£395,000
Freehold

2x  1x  1x 

Faversham Road, Seasalter, Whitstable,
Kent, CT5

Wards
Helping you move forwards



Main features

- Chain-free
- Cash buyers only
- Beautifully presented rear garden elevated above the beach
- Stunning sea views across Seasalter Beach and Whitstable Bay
- Set-up to be a wonderful holiday home or investment opportunity

Accommodation

GROUND FLOOR

Entrance Hallway

Bathroom

Bedroom 1 : 8'0 x 7'0 (2.44m x 2.14m)

Bedroom 2: 8'0 x 7'0 (2.44m x 2.14m)

Lounge : 18'11 x 11'0 (5.77m x 3.36m)

Kitchen Area: 8'0 x 6'0 (2.44m x 1.83m)

Dining / Sitting Area: (L-shaped) 13'0 x 9'11 (3.97m x 3.02m) plus 18'0 x 6'0 (5.49m x 1.83m)

Workshop / Utility Room

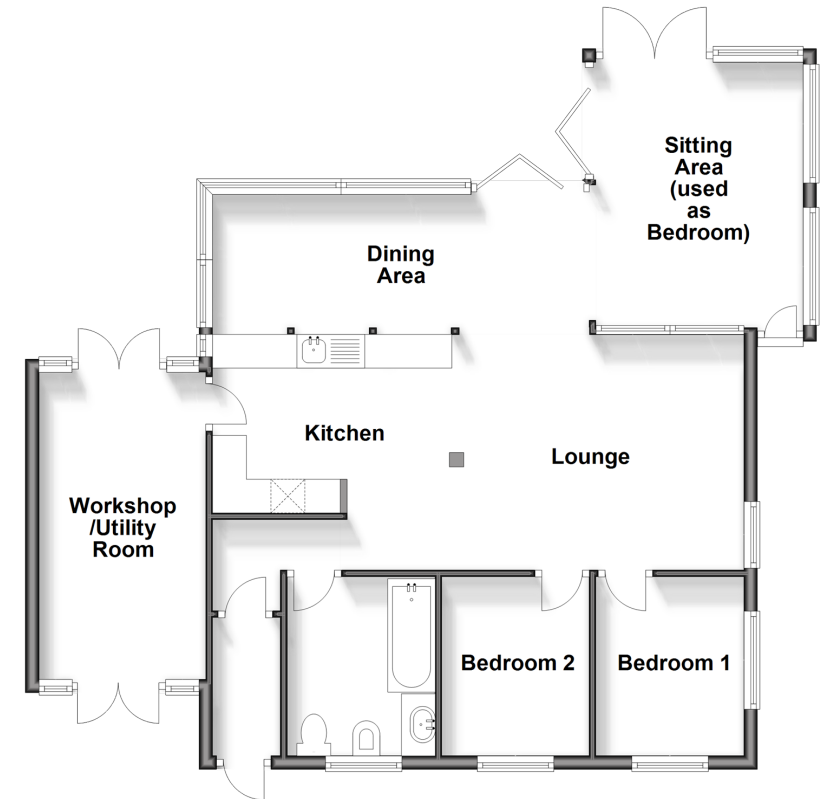
OUTSIDE

Driveway

Rear Garden

Ground Floor

Approx. 84.4 sq. metres (908.8 sq. feet)



Call Whitstable - 01227 772272 ■ wardsofkent.co.uk

- If buying to let, the energy rating will need to be improved to at least 'E' rating before you can let the property
- Legal advice should be taken to verify fixtures/fittings, planning, alterations and/or lease details
- Appliances & services are untested, dimensions are approximate and floor plans are not to scale



12033309/20240503/NF/NF