



Guide Price
£850,000

Freehold

4x  2x  1x 

**Alexandra Road,
Whitstable, Kent, CT5**

OVER 60?

Secure this property
for up to **59% less!**

Wards
Helping you move forwards

Accommodation

GROUND FLOOR

Entrance Hallway

Lounge: 21'0 x 11'0 (6.41m x 3.36m)

Kitchen/Breakfast Room: 16'0 x 10'0 (4.88m x 3.05m)

Utility Room: 6'0 x 3'10 (1.83m x 1.17m)

Shower Room

Study/ Dining Room : 12'0 x 9'0 (3.66m x 2.75m)

Bedroom 1: 15'8 x 11'0 (4.78m x 3.36m)

Annex Bedroom : 11'11 x 9'10 (3.63m x 3.00m)

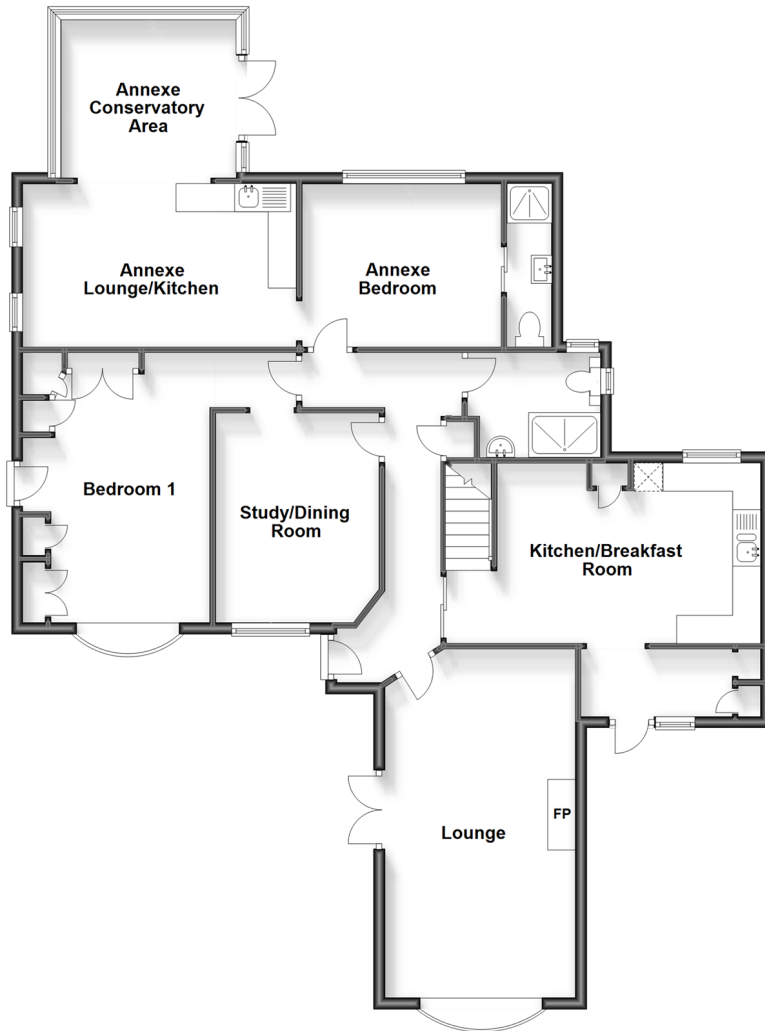
Annex Shower Room

Annex Lounge/Kitchen : 15'11 x 9'10 (4.85m x 3.00m)

Annex Conservatory Area : 11'0 x 9'0 (3.36m x 2.75m)

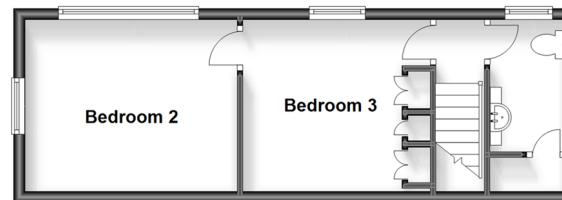
Ground Floor

Approx. 124.6 sq. metres (1341.3 sq. feet)



First Floor

Approx. 29.5 sq. metres (317.6 sq. feet)



FIRST FLOOR

Landing

Cloakroom

Bedroom 2: 13'0 x 10'0 (3.97m x 3.05m)

Bedroom 3: 10'11 x 10'0 (3.33m x 3.05m)

OUTSIDE

Front Garden

Driveway

Detached Garage: 17'0 x 13'0 (5.19m x 3.97m)

Rear Garden



Main features

- Highly sought after location
- Character features throughout the home
- Positioned in a quiet private road close to local shops and all amenities
- Beautiful wrap around gardens with separate areas
- Internal annex which offers flexible accommodation



Nearest Schools

Primary Schools: Joy Lane Primary 0.2 miles, Whitstable Junior School 0.3 miles, Whitstable and Seasalter Endowed C of E Junior School 0.4 miles
Secondary Schools: The Whitstable School 0.7 miles, Herne Bay High School 4.0 miles



Transport Information

Train Stations: Whitstable 0.7 miles, Chestfield & Swalecliffe 2.0 miles, Herne Bay 4.2 miles



Address

Alexandra Road, Whitstable, Kent, CT5



Directions

For directions to this property please contact us.



Wards
Helping you move forwards

Call Whitstable Branch 01227 772272 ■ wardsofkent.co.uk



- Legal advice should be taken to verify fixtures/fittings, planning, alterations and/or lease details
- Appliances & services are untested, dimensions are approximate and floor plans are not to scale
- Through a Homewise Home For Life Plan people aged 60+ can secure this property for up to 59% less, by purchasing a Lifetime Lease.



12033314/20240221/NF/KW