



Price
£330,000

Freehold

2x  1x  1x 

**Albert Court, Albert
Street, Whitstable, Kent,
CT5**

OVER 60?

Secure this property
for up to **59% less!**

Wards
Helping you move forwards



Main features

- Chain-free
- Allocated parking space
- Central Whitstable location
- Neutrally presented throughout
- A low maintenance courtyard garden which is perfect for those commuting or looking for a simple rental property.

Accommodation

GROUND FLOOR

Hallway

Kitchen : 9'10 x 5'0 (3.00m x 1.53m)

Lounge/Diner: 15'0 x 11'10 (4.58m x 3.61m)

FIRST FLOOR

Landing

Bathroom

Bedroom 1: 11'10 x 9'0 (3.61m x 2.75m)

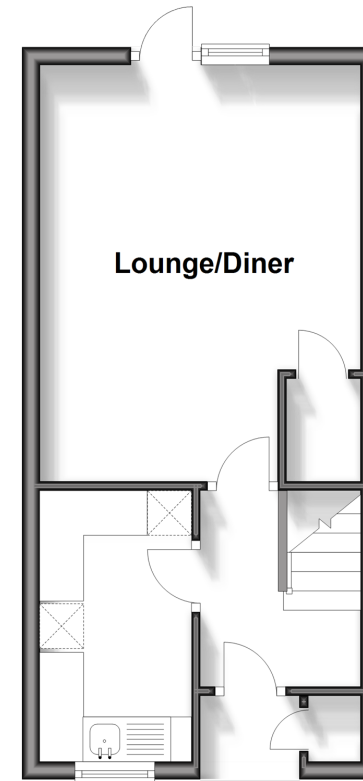
Bedroom 2 : 9'0 x 9'0 (2.75m x 2.75m)

OUTSIDE

Rear Courtyard Garden

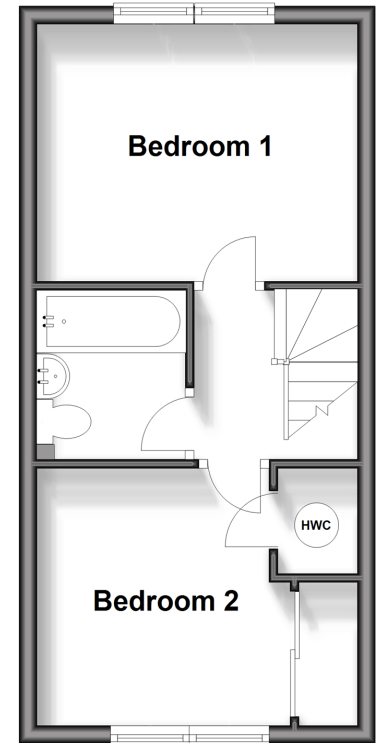
Ground Floor

Approx. 27.4 sq. metres (294.7 sq. feet)



First Floor

Approx. 28.7 sq. metres (309.3 sq. feet)



Call Whitstable - 01227 772272 ■ wardsofkent.co.uk

- Legal advice should be taken to verify fixtures/fittings, planning, alterations and/or lease details
- Appliances & services are untested, dimensions are approximate and floor plans are not to scale
- Through a Homewise Home For Life Plan people aged 60+ can secure this property for up to 59% less, by purchasing a Lifetime Lease.



12033323/20240110/NF/NF