



OVER 60?

Secure this property
for up to **59% less!**

Price

£400,000

Freehold

2x  1x  1x 

**Albert Street,
Whitstable, Kent, CT5**

Wards
Helping you move forwards



Main features

- Fisherman's cottage within a few minutes walk of Whitstable's vibrant High Street and Harbour
- Large kitchen and upstairs bathroom
- Low maintenance garden
- Spacious open plan living and dining area
- Idea holiday home or Air B&B investment

Accommodation

GROUND FLOOR

Internal Porch

Lounge: 11'0 x 10'0 (3.36m x 3.05m)

Dining Area: 11'0 x 9'7 (3.36m x 2.92m)

Kitchen: 15'2 x 6'1 (4.63m x 1.86m)

FIRST FLOOR

Landing

Bedroom 1 : 11'0 x 10'2 (3.36m x 3.10m)

Bedroom 2: 10'3 x 8'2 (3.13m x 2.49m)

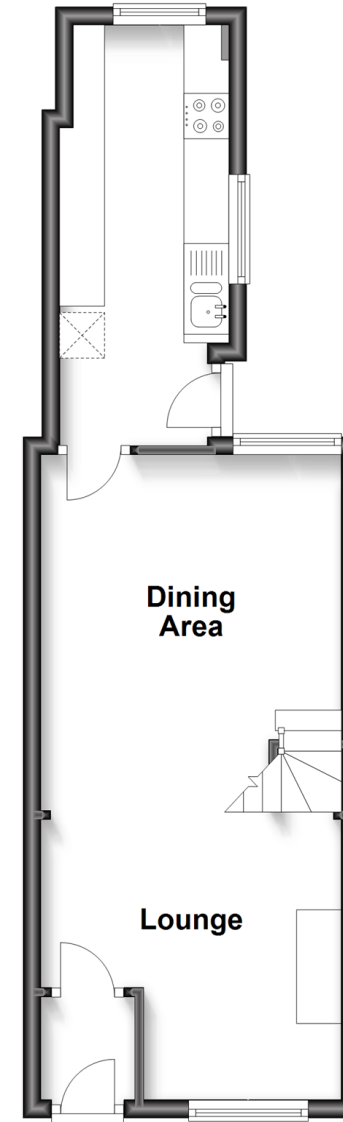
Bathroom : 15'4 x 6'2 (4.68m x 1.88m)

OUTSIDE

Rear Garden

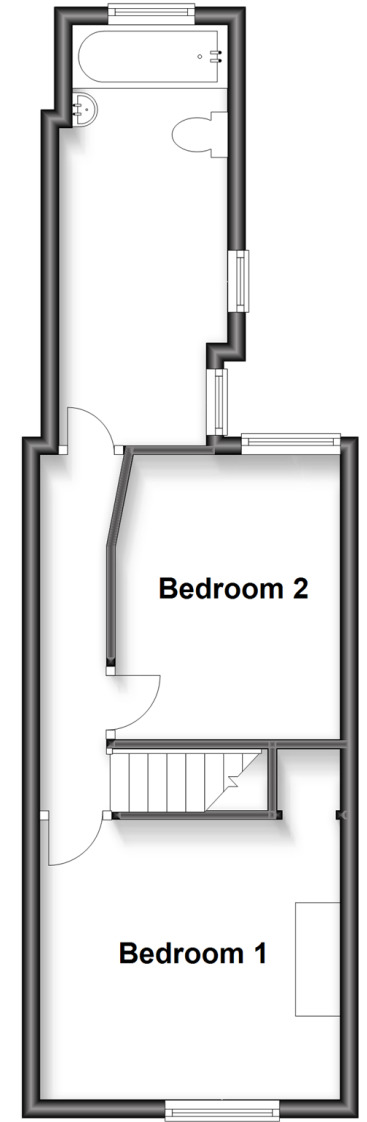
Ground Floor

Approx. 32.2 sq. metres (346.3 sq. feet)



First Floor

Approx. 32.2 sq. metres (346.3 sq. feet)



Call Whitstable - 01227 772272 ■ wardsofKent.co.uk

- Legal advice should be taken to verify fixtures/fittings, planning, alterations and/or lease details
- Appliances & services are untested, dimensions are approximate and floor plans are not to scale
- Through a Homewise Home For Life Plan people aged 60+ can secure this property for up to 59% less, by purchasing a Lifetime Lease.



12033370/20240124/AR/NF