



Guide Price
£475,000

Freehold

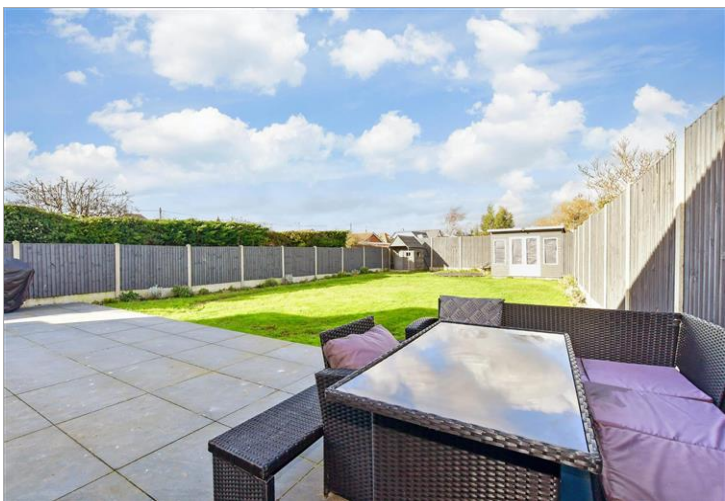
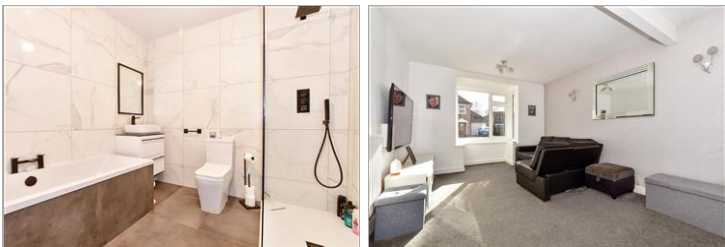
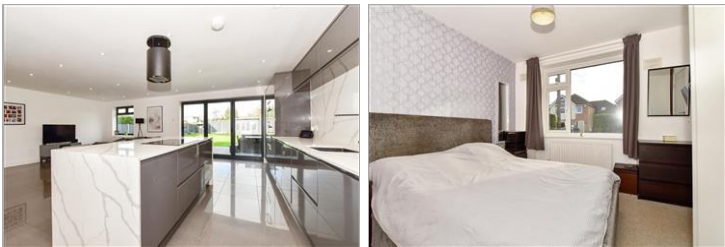
2x  1x  2x 

**Rayham Road,
Whitstable, Kent, CT5**

OVER 60?

Secure this property
for up to **59% less!**

Wards
Helping you move forwards



Main features

- Driveway parking for 3/4 vehicles alongside a garage
- Planning permission has been granted for a loft conversion
- Well proportioned bedrooms
- New boiler installed 3 years ago
- Open plan lounge/kitchen/diner with fitted appliances and bi-fold doors to the large rear garden

Accommodation

GROUND FLOOR

Hallway

Bedroom 1: 11'0 x 10'9 (3.36m x 3.28m)

Bath and Shower Room

Snug / Lounge : 20'2 x 11'0 (6.15m x 3.36m)

Bedroom 2 : 11'8 x 8'3 (3.56m x 2.52m)

Kitchen / Diner : 24'9 x 18'4 (7.55m x 5.59m)

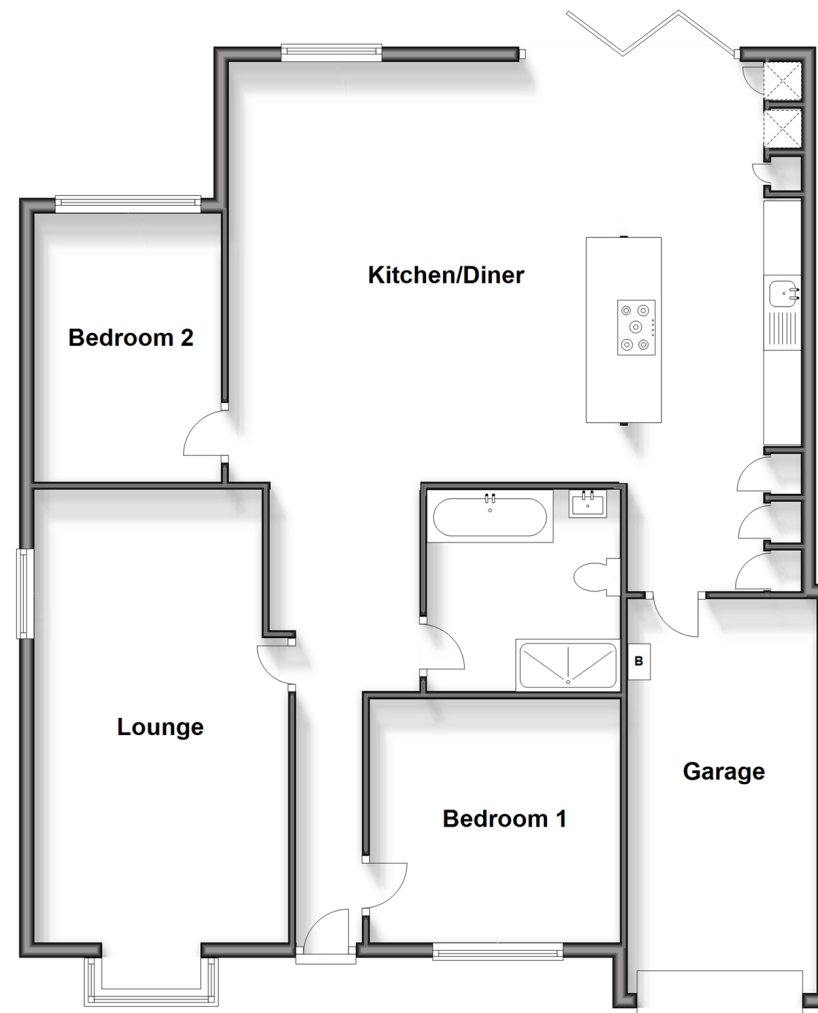
OUTSIDE

Driveway

Rear garden

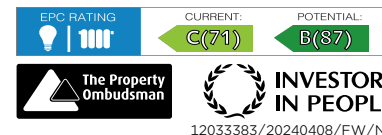
Ground Floor

Approx. 117.7 sq. metres (1267.4 sq. feet)



Call Whitstable - 01227 772272 ■ wardsofkent.co.uk

- Legal advice should be taken to verify fixtures/fittings, planning, alterations and/or lease details
- Appliances & services are untested, dimensions are approximate and floor plans are not to scale
- Through a Homewise Home For Life Plan people aged 60+ can secure this property for up to 59% less, by purchasing a Lifetime Lease.



12033383/20240408/FW/NF