



**Price**  
**£700,000**

**Freehold**

4x  2x  2x 

**Maydowns Road,  
Chestfield, Whitstable,  
Kent, CT5**

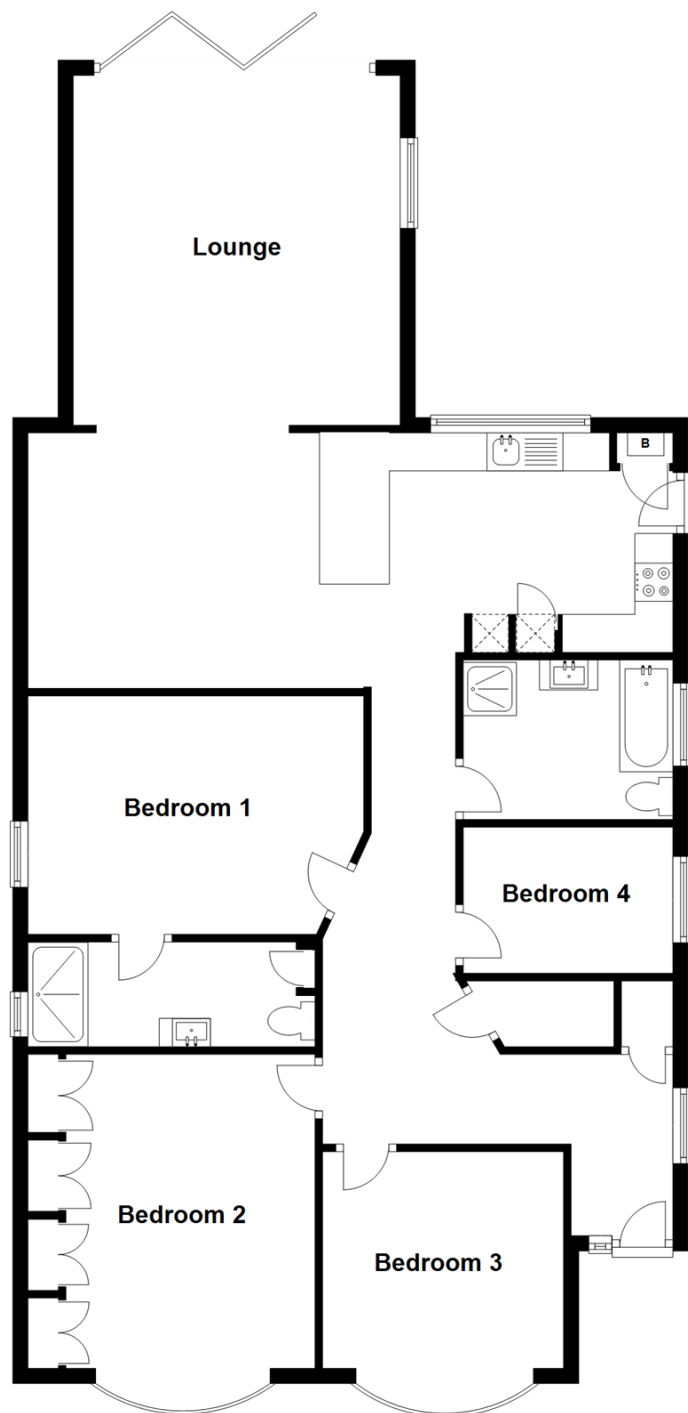
**OVER 60?**

Secure this property  
for up to **59% less!**

*Wards*  
Helping you move forwards

## Ground Floor

Approx. 122.6 sq. metres (1320.0 sq. feet)



## Accommodation

### GROUND FLOOR

Hallway

Bedroom 3: 10'5 x 9'5 (3.18m x 2.87m)

Bedroom 2: 13'7 x 12'5 (4.14m x 3.79m)

Bedroom 1: 14'5 x 10'3 (4.40m x 3.13m)

En-suite Shower Room

Bedroom 4: 9'0 x 6'5 (2.75m x 1.96m)

Bathroom

Kitchen/Diner: 28'2 x 11'0 (8.59m x 3.36m)

Lounge: 15'8 x 14'0 (4.78m x 4.27m)

### OUTSIDE

Driveway

Front Garden

Former Garage

Rear Garden





## Main features

- A stunning representation of a modern, detached bungalow
- Situated on a quiet and private road
- The former garage now functions as a workshop/outbuilding
- Ground-floor extension provides the quintessential open-plan living area
- Luxury karndean flooring throughout the hallway and living area



### Nearest Schools

Primary Schools: Swalecliffe Community Primary 0.5 miles, Briary Primary 1.2 miles, St Mary's Catholic Primary 1.3 miles

Secondary Schools: The Whitstable School 1.4 miles



### Transport Information

Train Stations: Chestfield & Swalecliffe 0.2 miles, Whitstable 1.5 miles, Herne Bay 2.1 miles



### Address

Maydowns Road, Chestfield, Whitstable, Kent, CT5



### Directions

For directions to this property please contact us.





**Wards**  
Helping you move forwards

Call Whitstable Branch 01227 772272 ■ [wardsofkent.co.uk](http://wardsofkent.co.uk)



- Legal advice should be taken to verify fixtures/fittings, planning, alterations and/or lease details
- Appliances & services are untested, dimensions are approximate and floor plans are not to scale
- Through a Homewise Home For Life Plan people aged 60+ can secure this property for up to 59% less, by purchasing a Lifetime Lease.



12033397/20240224/AR/NF