



OVER 60?

Secure this property
for up to **59% less!**

Price

£530,000

Freehold

4x  2x  2x 

**"Windways", Share &
Coulter Road,
Chestfield, Whitstable,
Kent, CT5**

Wards
Helping you move forwards



Main features

- Generous plot with spacious front and rear gardens
- A kitchen diner space perfect for hosting
- Well proportioned bedrooms
- Extended on the ground floor providing ample living space for a growing family
- Situated in the heart of Chestfield

Accommodation

GROUND FLOOR

Entrance Hallway
 Sitting Room : 10'6 x 9'9 (3.20m x 2.97m)
 Shower Room
 Kitchen : 14'0 x 11'7 (4.27m x 3.53m)
 Dining Area: 11'1 x 7'6 (3.38m x 2.29m)
 Lounge : 12'9 x 12'5 (3.89m x 3.79m)
 Utility Room: 6'4 x 5'7 (1.93m x 1.70m)
 Bathroom

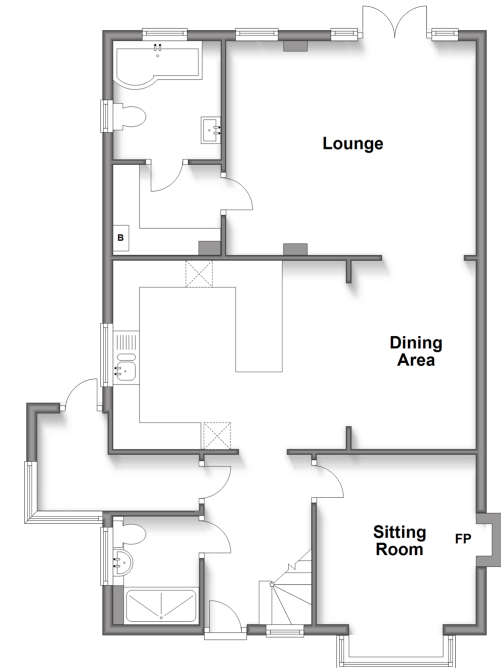
FIRST FLOOR

Landing
 Bedroom 1 : 10'5 x 9'10 (3.18m x 3.00m)
 Bedroom 2 : 11'1 x 8'3 (3.38m x 2.52m)
 Bedroom 3 : 11'2 x 9'6 (3.41m x 2.90m)
 Bedroom 4: 13'11 x 11'0 (4.24m x 3.36m)

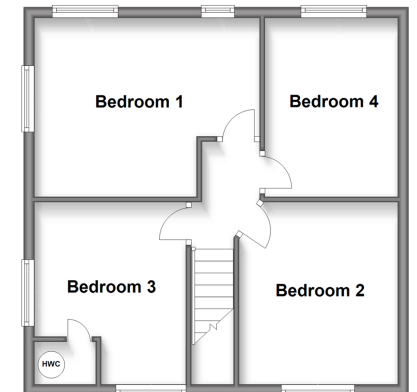
OUTSIDE

Front Garden
 Rear Garden
 Outbuilding

Ground Floor
 Approx. 77.7 sq. metres (836.0 sq. feet)



First Floor
 Approx. 46.8 sq. metres (504.2 sq. feet)



Call Whitstable - 01227 772272 ■ wardsofkent.co.uk

- Legal advice should be taken to verify fixtures/fittings, planning, alterations and/or lease details
- Appliances & services are untested, dimensions are approximate and floor plans are not to scale
- Through a Homewise Home For Life Plan people aged 60+ can secure this property for up to 59% less, by purchasing a Lifetime Lease.



12033398/20240224/AR/NF