



Price
£500,000

Freehold

4x  1x  2x 

**Primrose Way,
Chestfield, Whitstable,
Kent, CT5**

OVER 60?

Secure this property
for up to **59% less!**

Wards
Helping you move forwards



Main features

- Beautifully presented with neutral decor throughout
- Bespoke TV cabinet in the lounge
- open-plan kitchen/diner and separate utility room
- New resin bound driveway with ample parking for 3 cars
- Separate family room on the ground floor

Accommodation

GROUND FLOOR

Hallway
Cloakroom
Family Room: 13'1 x 8'8 (3.99m x 2.64m)
Lounge: 13'1 x 12'1 (3.99m x 3.69m)
Kitchen/Dining Area: 22'3 x 8'3 (6.79m x 2.52m)
Utility Area: 8'3 x 6'2 (2.52m x 1.88m)
Conservatory: 10'0 x 8'11 (3.05m x 2.72m)

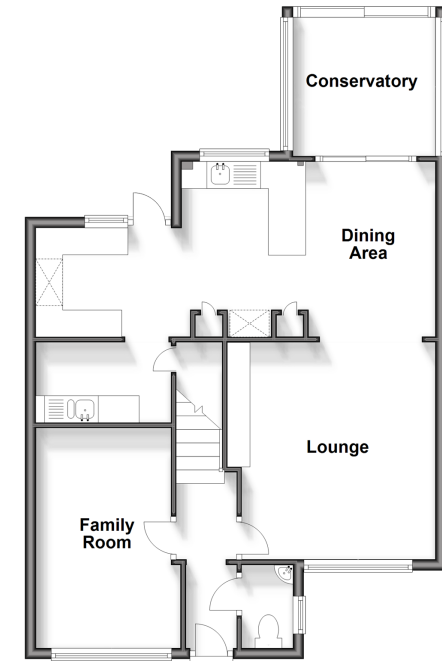
FIRST FLOOR

Landing
Bedroom 1: 8'9 x 8'7 (2.67m x 2.62m)
Bedroom 2: 10'9 x 8'2 (3.28m x 2.49m)
Bathroom
Bedroom 3: 12'6 x 8'9 (3.81m x 2.67m)
Bedroom 4: 6'5 x 6'3 (1.96m x 1.91m)

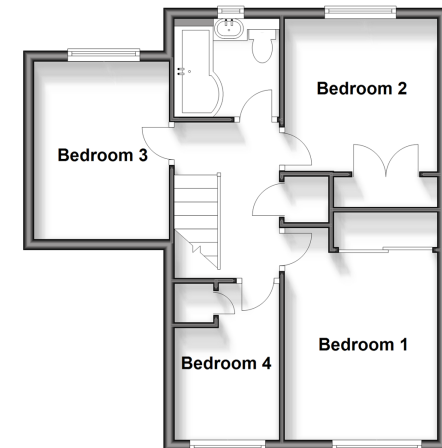
OUTSIDE

Driveway
Rear Garden

Ground Floor
Approx. 66.5 sq. metres (716.2 sq. feet)



First Floor
Approx. 46.9 sq. metres (505.2 sq. feet)



Call Whitstable - 01227 772272 ■ wardsofkent.co.uk

- Legal advice should be taken to verify fixtures/fittings, planning, alterations and/or lease details
- Appliances & services are untested, dimensions are approximate and floor plans are not to scale
- Through a Homewise Home For Life Plan people aged 60+ can secure this property for up to 59% less, by purchasing a Lifetime Lease.



12033426/20240316/AR/NF